



MEDIA CONTACT: **David Zook**
435-890-9239

FOR IMMEDIATE RELEASE
June 12, 2025

PRESS RELEASE

Cache County Announces Second Major Open Space Acquisition with Purchase of 557 Acres in Smithfield

Smithfield, UT — Cache County today announced the acquisition of 557 acres of scenic foothill land located east of Smithfield City, near 190 S 1600 E. This major land purchase, for \$1.9 million, represents the second major acquisition in the County's ongoing commitment to preserving open space, protecting natural resources, and enhancing outdoor recreation opportunities.

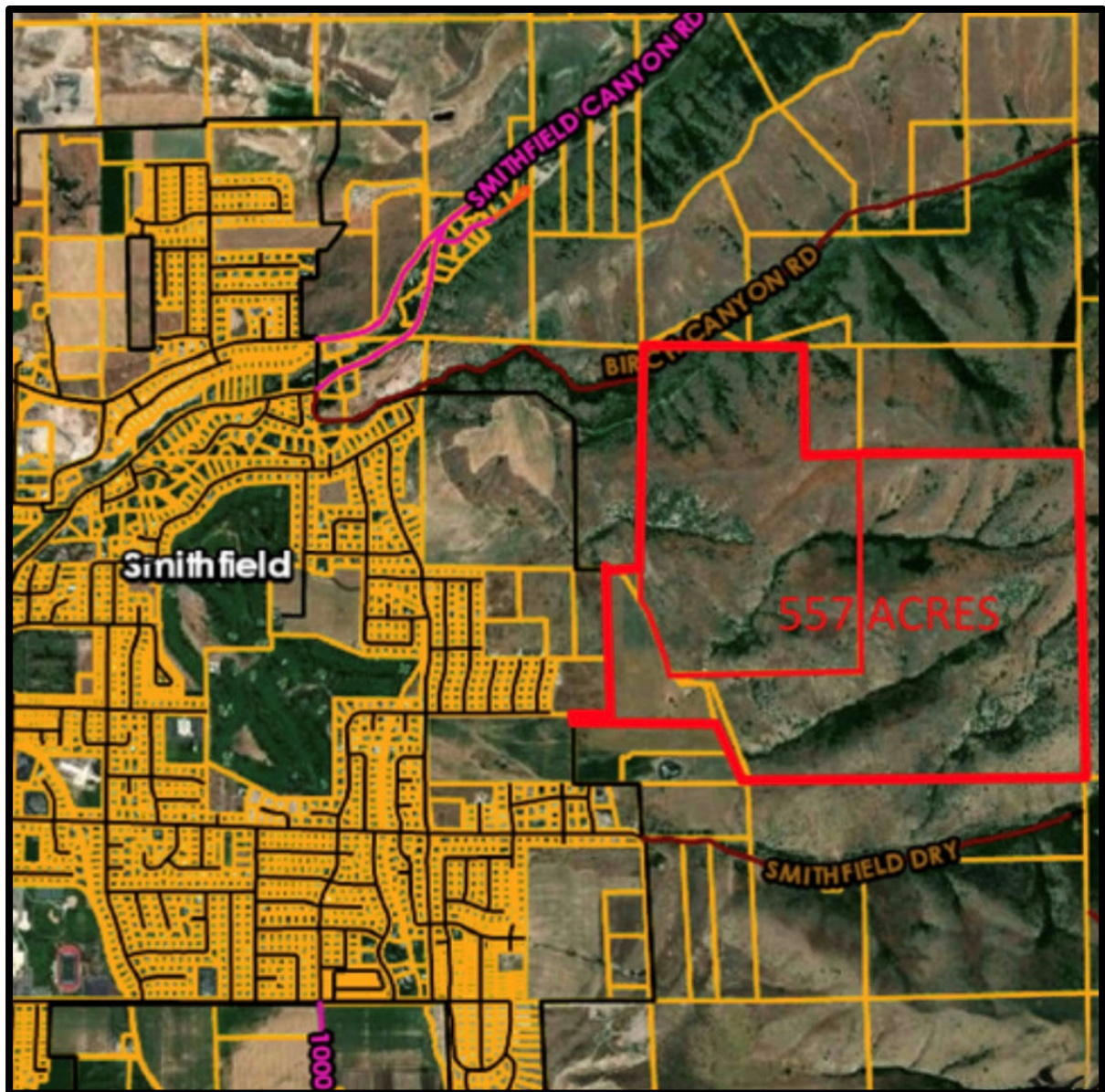
The property, formerly the Chambers Farm, features rolling hills, sweeping valley views, and diverse terrain well-suited for hiking, wildlife, and trail development. Nestled above the city and stretching from Birch Canyon Road to Smithfield Dry Canyon, the land borders national forest, as well as other lands already preserved as open space.

"This acquisition represents a generational investment in the preservation of open public lands," said County Executive David Zook. "It protects a vital natural corridor above Smithfield and provides a critical link for the Bonneville Shoreline Trail."

The land, which is currently zoned for agricultural use, has historically served as a grazing and farming area, and features seasonal flowing water and a pond. Cache County plans to work collaboratively with local partners and stakeholders in determining public access and trail development, while maintaining the landscape's natural character.

The property offers rolling hillsides blanketed with wildflowers, scenic ridgelines, and panoramic views of Cache Valley and the Wellsville Mountains—offering a glimpse into the remarkable experiences this land will provide future generations.

This purchase aligns with Cache County's long-term Open Space and Trails Master Plan, which emphasizes the importance of protecting foothill landscapes, expanding trail networks, and promoting health, quality of life, and environmental stewardship.





###