

LOGAN - CACHE AIRPORT AUTHORITY BOARD MEETING

FEBRUARY 6, 2025

APPROVED MINUTES

The Logan-Cache Airport Authority Board convened in a regular session on Thursday February 6, 2025 at 8:30 a.m. in the Cache County Historic Courthouse, County Council Chambers, 199 North Main, Logan, Utah.

ATTENDANCE

Members of the Airport Authority Board in Attendance:

David Zook – Chair -- Cache County Executive
John Kerr – Vice Chair – At large appointment by Airport Authority Board
Mayor Holly Daines – Logan City Mayor
Jeannie F. Simmonds – Logan City Council – At large appointment by Logan City
Brett Hugie – At large appointment by Logan City
Ryan Snow – At large appointment by Cache County
Kirk Jensen – Logan City Economic Development Director – Ex-officio Advisory Member
Shawn Milne – Director of Regional Economic Development – Ex-officio Advisory Member

Members of the Airport Authority Board Absent:

Keegan Garrity – Cache County Council – At large appointment by Cache County

Also in Attendance:

Bob Low – Airport Manager
Kasey Maxwell – Airport
Valerie Black – Airport
Wesley Bingham – Cache County Finance Director
Robert Stephens – Logan City Fire Department
Conner Butterfield – Lochner Engineering
Judd Hill – Lochner Engineering
Antony Congram – Lochner Engineering
Aaron Dyches – USU Aviation
Baron Wesemann – USU Aviation
Scott Weaver – Leading Edge Aviation
Kim Hall
Dan Boston
Marv Halling
Robert Kidd
Janeen Allen – Minutes

1. CALL TO ORDER

Chairman David Zook called the meeting to order at 8:30 a.m. and welcomed new board member, Keegan Garrity, who replaced Karl Ward on the Cache County Council. Garrity was unable to

attend the meeting but will be in attendance at the next board meeting. Zook also welcomed Brett Hugie, who was recently reappointed by Logan City. He expressed appreciation to Hugie for his willingness to continue to serve on the board.

2. ACTION ITEMS

a. APPROVAL OF MINUTES – January 2, 2025

ACTION: Motion was made by Brett Hugie and seconded by Ryan Snow to approve the minutes of January 2, 2025 as written. The vote in favor was unanimous, 6-0 (Karl Ward absent for vote)

b. ELECTION OF BOARD CHAIR AND VICE CHAIR

Chairman Kerr requested nominations for Board Chair and Vice Chair.

ACTION: Mayor Holly Daines nominated David Zook for Chair and John Kerr for Vice Chair. There were no other nominations. John Kerr called for a vote. The vote in favor was unanimous, 6-0 (Karl Ward absent for vote)

c. APPOINTMENTS OF LOGAN CITY AND CACHE COUNTY ECONOMIC DEVELOPMENT DIRECTORS AS EX OFFICIO BOARD MEMBERS (Attachment A).

Chairman Zook expressed that a review of the Airport Authority Bylaws, shows there was an expectation that the economic development directors from both Logan City and Cache County would be able to serve as ex officio members of the board. He then appointed Kirk Jensen from Logan City and Shawn Milne from Cache County as ex officio members of the board and asked them to come and take seats on the dais.

Mr. Zook introduced Mr. Milne and gave a short background including his experience with aviation related matters on the state level. Mayor Daines then introduced Mr. Jensen as one with vast economic development experience and history working with the airport.

3. MANAGER'S REPORT

Bob Low presented the Manager's Report consisting of the following:

- **Year-End Budget Surplus Purchases** – Some remaining budget from last year was used to purchase a FOD mat for the airport. FOD stands for Foreign Objects and Debris. The FOD mat is pulled behind a vehicle and picks up debris that falls onto taxi lanes, taxiways and runways. Also purchased with remaining budget was a new pressure washer to clean lights on taxiways and runways that birds have messed on. They were also able to order a PAPI digital aiming device kit that directs the light to be at a certain angle on an aircraft's final approach. The device helps measure the angle to make sure it is correct for approaching aircraft.

- **Paraglider Restrictions at Airport** – Mr. Low was informed by the FAA upon their investigation of an incident at our airport decided to severely restrict paraglider use at the airport requiring anyone wanting to fly a paraglider to call the air route traffic control center for approval which will more than likely will not be given. The reason they gave him for this restriction is that the airport is too busy for paraglider use.

Mr. Low explained that the paragliders operate on the abandoned runway off to the west. They come in on the gravel road and through a gate which they have the com. He also complained that there have been a few instances where they have tracked mud back down the taxiway and left it for the airport staff to clean up.

- **Potential Investor** – Mr. Low has been approached by an investor from Montreal, Canada who would like to develop some land at our airport. Chairman Zook recommended forming a committee with the two new economic development director board members and Mr. Low. He then asked if any other board members would like to be on the committee. Jeannie Simmonds volunteered to be on it. He asked the new committee to follow up on this issue and then report back to the airport authority board.

Mr. Hugie asked about the status of all the Part 139 Certification Inspection issues. He wanted to get an update on where everything is on that front. A quick discussion determined that all timely issues have been resolved except the paint project that requires the weather to warm up before they can complete it.

4. DISCUSSION ITEMS

a. LAND LEASE REVIEW – BOB LOW

Mr. Low provided a revised copy of the lease agreement that the subcommittee has been working on. He indicated that recommendations from the Board are included in this version. Mr. Low thanked Marv Halling who presented at the last meeting for pointing out the unfairness of the uniform lease rate to small hangar owners.

A lengthy discussion followed with input from Lochner Engineering Representative, Judd Hill. The board members discussed the fairness of charges for small and large hangars, the importance of efficient use of land and the need for fairness in the lease agreements. Jeannie Simmonds recommended a consistent rate of 43 cents per square foot for all hangars (footprint only) or a lesser amount for hangars (footprint only) with additional charges for land around hangars.

At the end of the discussion, the Board agreed to review the lease agreement and provide direction to the manager to finalize the document. Chairman Zook asked Mr. Low to provide the board members with a redline version of the lease agreement reflecting all the changes for their review. It will be on the next agenda as an action item.

b. **MASTER PLAN UPDATE – JUDD HILL, LOCHNER ENGINEERING**

Mr. Hill said that the Master Plan draft is complete and is currently under review by the Technical Advisory Committee.

Board members discussed potential development areas and the need for public input and FAA approval.

c. **2025 CAPITAL PROJECTS – CONNOR BUTTERFIELD, LOCHNER**

Mr. Butterfield provided the Board with a list of the 2025 Airport Capital Projects including:

- **Paint Project** – Bids in and waiting for warmer weather
- **Taxilane Kilo** – Federal and State project 1.1 million total project cost – local match \$30,000
- **Snow Removal Equipment** – Estimating \$250,000 Federal and State project – Local match \$6,000
- **Taxiway Charlie** – State and Local
- **PAPI Project** – Still waiting to hear from the FAA

Board members discussed the importance of these projects and the need for timely completion.

d. **FINANCIAL REPORT (Attachment B).**

Mr. Zook provided board members with a current financial report and said he would like to have one at each meeting going forward.

Jeannie Simmonds requested a person from the Finance Office come and explain the budget to the board members.

Mr. Zook said it will be on the agenda for the next meeting.

e. **OPEN ITEMS**

- Professor Wesemann provided an update on the 2025 Airport Open House, including planned events and coordination with UDOT Division of Aeronautics. Board members discussed the importance of the open house in showcasing aviation to the community and the need for proper planning and coordination.
- Mayor Holly Daines and John Kerr provided updates on ongoing projects, including the tower repair and the lease expansion for Leading Edge Aviation. The Board agreed to review and finalize these projects at the next meeting.

5. NEXT SCHEDULED BOARD MEETING

Thursday, February 6, 2025 at 8:30 a.m. – Cache Historic Courthouse, Council Chambers

6. CLOSED MEETING

ACTION: Motion was made by Mayor Holly Daines and seconded by Jeannie Simmonds to enter a closed meeting to discuss the purchase, exchange, or lease of real property pursuant to Utah Code 52-4-205(d). The vote in favor was unanimous, 6-0 (Karl Ward absent for vote)

10:14 am – Mayor Daines left the meeting

10:30 am – Jeannie Simmonds left the meeting

ACTION: Motion was made by Brett Hugie and seconded by Ryan Snow to go out of the closed meeting and reconvene in a regular Airport Authority Board meeting. The vote in favor was unanimous, 4-0 (Mayor Holly Daines, Jeannie Simmonds, and Karl Ward absent for vote)

Upon reconvening, a few items were brought up by board member, Brett Hugie, for clarification, including

- Airport Emergency Plan
- Leading Edge Expansion and Site Request – Mr. Snow clarified that his motion was intended to give direction to Leading Edge to move forward in the process.
- Clarification regarding the \$20,000 grant received by the Airport Authority Board in determining how the funds will be spent.

7. ADJOURN

The meeting adjourned at 10:42 a.m.

LOGAN – CACHE AIRPORT AUTHORITY BOARD
FEBRUARY 6, 2025

ATTACHMENT A

FAA CIVIL RIGHTS – TITLE VI

FAA CONTRACT PROVISIONS



Disclaimer: The purpose of this document is to assist Airports with their compliance efforts, it does not alter or modify the terms of any applicable statute or regulation, is not a substitute for reading the regulation or the FAA Contract Provision Guidelines, nor does it constitute legal advice.

Federal laws and regulations require that an Airport include specific clauses in certain contracts regardless of whether or not the project is federally funded.

The term “contractor” is understood to mean a contractor or subcontractor and means one who participates through a contract or subcontract (at any tier).

All text provided in each listed provision is noted as “MANDATORY TEXT,” which means it must be used without modification. Please see the guidelines in the FAA link below for further information.

FAA Contract Provision Guidelines: Federal Certifications

<https://www.faa.gov/sites/faa.gov/files/2023-01/combined-federal-contract-provisions-2023-1-20.pdf>

Civil Rights - Title VI - FAA Contract Provisions

CIVIL RIGHTS

The Airport must include this provision in all contracts, subcontracts, lease agreements or transfer agreements. MANDATORY TEXT

Civil Rights General

In all its activities within the scope of its airport program, the Contractor agrees to comply with pertinent statutes, Executive Orders, and such rules as identified in Title VI List of Pertinent Nondiscrimination Acts and Authorities to ensure that no person shall, on the grounds of race, color, national origin (including limited English proficiency), creed, sex (including sexual orientation and gender identity), age, or disability be excluded from participating in any activity conducted with or benefiting from Federal assistance. This provision is in addition to that required by Title VI of the Civil Rights Act of 1964.

Included the additional provision with the above without modification; the applicable text is based on whether the contract is a general contract or whether the contract is a lease or transfer agreement.

For General Contract Agreements contracts that do not involve property agreements.

The above provision binds the Contractor and subcontractors from the bid solicitation period through the completion of the contract.

For Lease Agreements & Transfer Agreements; property agreements such leases of concession space in a terminal and leases where a physical portion of the airport is transferred for use.

If the Contractor transfers its obligation to another, the transferee is obligated in the same manner as the Contractor. The above provision obligates the Contractor for the period during which the property is owned, used or possessed by the Contractor and the airport remains obligated to the Federal Aviation Administration.

CIVIL RIGHTS - TITLE VI ASSURANCES

The Airport must include this provision in all solicitations for bids, requests for proposals, any work, or any negotiated agreements. MANDATORY TEXT

Title VI Solicitation Notice:

Roswell Air Center, in accordance with the provisions of Title VI of the Civil Rights Act of 1964 (78 Stat. 252, 42 USC §§ 2000d to 2000d-4) and the Regulations, hereby notifies all bidders or offerors that it will affirmatively ensure that for any contract entered into pursuant to this advertisement, [select businesses, or disadvantaged business enterprises or airport concession disadvantaged business enterprises] will be afforded full and fair opportunity to submit bids in response to this invitation and no businesses will be discriminated against on the grounds of race, color, national origin (including limited English proficiency), creed, sex (including sexual orientation and gender identity), age, or disability in consideration for an award.

The Airport must include this provision in all contracts, subcontracts, or agreements.
MANDATORY TEXT

Title VI List of Pertinent Nondiscrimination Acts and Authorities

During the performance of this contract, the Contractor, for itself, its assignees, and successors in interest (hereinafter referred to as the "Contractor") agrees to comply with the following non-discrimination statutes and authorities; including but not limited to:

- Title VI of the Civil Rights Act of 1964 (42 USC § 2000d et seq., 78 stat. 252) (prohibits discrimination on the basis of race, color, national origin);
- 49 CFR part 21 (Non-discrimination in Federally-Assisted programs of the Department of Transportation—Effectuation of Title VI of the Civil Rights Act of 1964);
- The Uniform Relocation Assistance and Real Property Acquisition Policies Act of 1970, (42 USC§4601) (prohibits unfair treatment of persons displaced or whose property has been acquired because of Federal or Federal-aid programs and projects);
- Section 504 of the Rehabilitation Act of 1973 (29 USC § 794 et seq.), as amended (prohibits discrimination on the basis of disability); and 49 CFR part 27 (Nondiscrimination on the Basis of Disability in Programs or Activities Receiving Federal Financial Assistance);
- The Age Discrimination Act of 1975, as amended (42 USC § 6101 et seq.) (prohibits discrimination on the basis of age);
- Airport and Airway Improvement Act of 1982 (49 USC § 47123), as amended (prohibits discrimination based on race, creed, color, national origin, or sex);
- The Civil Rights Restoration Act of 1987 (PL 100-259) (broadened the scope, coverage and applicability of Title VI of the Civil Rights Act of 1964, the Age Discrimination Act of 1975 and Section 504 of the Rehabilitation Act of 1973, by expanding the definition of the terms "programs or activities" to include all of the programs or activities of the Federal-aid recipients, sub-recipients and contractors, whether such programs or activities are Federally funded or not);
- Titles II and III of the Americans with Disabilities Act of 1990 (42 USC § 12101, et seq) (prohibit discrimination on the basis of disability in the operation of public entities, public and private transportation systems, places of public accommodation, and certain testing entities) as implemented by U.S. Department of Transportation regulations at 49 CFR parts 37 and 38;
- The Federal Aviation Administration's Nondiscrimination statute (49 USC § 47123) (prohibits discrimination on the basis of race, color, national origin, and sex);
- Executive Order 12898, Federal Actions to Address Environmental Justice in Minority Populations and Low-Income Populations (ensures nondiscrimination against minority populations by discouraging programs, policies, and activities with disproportionately high and adverse human health or environmental effects on minority and low-income populations);
- Executive Order 13166, Improving Access to Services for Persons with Limited English Proficiency, and resulting agency guidance, national origin discrimination includes discrimination because of limited English proficiency (LEP). To ensure compliance with Title VI, you must take reasonable steps to ensure that LEP persons have meaningful access to your programs [70Fed. Reg. 74087 (2005)];

- Title IX of the Education Amendments of 1972, as amended, which prohibits you from discriminating because of sex in education programs or activities (20 USC § 1681, et seq).

The Airport must include this provision in all contracts, subcontracts, or service contracts with utility companies.

MANDATORY TEXT

Nondiscrimination Requirements/ Title VI Clauses for Compliance

Compliance with Nondiscrimination Requirements:

During the performance of this contract, the Contractor, for itself, its assignees, and successors in interest (hereinafter referred to as the "Contractor"), agrees as follows:

1. Compliance with Regulations: The Contractor (hereinafter includes consultants) will comply with the Title VI List of Pertinent Nondiscrimination Acts and Authorities, as they may be amended from time to time, which are herein incorporated by reference and made a part of this contract.
2. Nondiscrimination: The Contractor, with regard to the work performed by it during the contract, will not discriminate on the grounds of race, color, national origin (including limited English proficiency), creed, sex (including sexual orientation and gender identity), age, or disability in the selection and retention of subcontractors, including procurements of materials and leases of equipment. The Contractor will not participate directly or indirectly in the discrimination prohibited by the Nondiscrimination Acts and Authorities, including employment practices when the contract covers any activity, project, or program set forth in Appendix B of 49 CFR part 21.
3. Solicitations for Subcontracts, including Procurements of Materials and Equipment: In all solicitations, either by competitive bidding or negotiation made by the Contractor for work to be performed under a subcontract, including procurements of materials, or leases of equipment, each potential subcontractor or supplier will be notified by the Contractor of the contractor's obligations under this contract and the Nondiscrimination Acts and Authorities on the grounds of race, color, or national origin.
4. Information and Reports: The Contractor will provide all information and reports required by the Acts, the Regulations, and directives issued pursuant thereto and will permit access to its books, records, accounts, other sources of information, and its facilities as may be determined by the Sponsor or the Federal Aviation Administration to be pertinent to ascertain compliance with such Nondiscrimination Acts and Authorities and instructions. Where any information required of a contractor is in the exclusive possession of another who fails or refuses to furnish the information, the Contractor will so certify to the Sponsor or the Federal Aviation Administration, as appropriate, and will set forth what efforts it has made to obtain the information.
5. Sanctions for Noncompliance: In the event of a Contractor's noncompliance with the non-discrimination provisions of this contract, the Sponsor will impose such contract sanctions as it or the Federal Aviation Administration may determine to be appropriate, including, but not limited to:
 - a. Withholding payments to the Contractor under the contract until the Contractor complies; and/or
 - b. Cancelling, terminating, or suspending a contract, in whole or in part.
6. Incorporation of Provisions: The Contractor will include the provisions of paragraphs one through six in every subcontract, including procurements of materials and leases of equipment, unless exempt by the Acts, the Regulations, and directives issued pursuant there to. The Contractor will take action with respect to any subcontract or procurement as the Sponsor or the Federal Aviation Administration may direct as a means of enforcing such provisions including sanctions for noncompliance. Provided, that if the Contractor becomes involved in, or is threatened with

litigation by a subcontractor, or supplier because of such direction, the Contractor may request the Sponsor to enter into any litigation to protect the interests of the Sponsor. In addition, the Contractor may request the United States to enter into the litigation to protect the interests of the United States. The above provision binds the Contractor and subcontractors from the bid solicitation period through the completion of the contract.

In addition -The Airport must include this provision as a covenant running with the land, in any future deeds, leases, licenses, permits, or similar instruments entered into by the Sponsor with other parties for all transfers of real property acquired or improved under Airport Improvement Program

This applies to agreements such as leases where a physical portion of the airport is transferred for use, for example a fuel farm, apron space, or a parking facility. MANDATORY TEXT

Clauses for Transfer of Real Property Acquired or Improved Under the Airport Improvement Program

The following clauses will be included in deeds, licenses, leases, permits, or similar instruments entered into by the Sponsor pursuant to the provisions of the Airport Improvement Program grant assurances:

- A. The (grantee, lessee, permittee, etc. as appropriate) for himself/herself, his/her heirs, personal representatives, successors in interest, and assigns, as a part of the consideration hereof, does hereby covenant and agree [in the case of deeds and leases add “as a covenant running with the land”] that:
 1. In the event facilities are constructed, maintained, or otherwise operated on the property described in this (deed, license, lease, permit, etc.) for a purpose for which a Federal Aviation Administration activity, facility, or program is extended or for another purpose involving the provision of similar services or benefits, the (grantee, Guidelines for Contract Provisions for Obligated Sponsors and Airport Improvement Program Projects Issued on January 20, 2023 Page 25 licensee, lessee, permittee, etc.) will maintain and operate such facilities and services in compliance with all requirements imposed by the Nondiscrimination Acts and Regulations listed in the Title VI List of Pertinent Nondiscrimination Acts and Authorities (as may be amended) such that no person on the grounds of race, color, or national origin, will be excluded from participation in, denied the benefits of, or be otherwise subjected to discrimination in the use of said facilities.
- B. With respect to licenses, leases, permits, etc., in the event of breach of any of the above Nondiscrimination covenants, (Title of Sponsor) will have the right to terminate the (lease, license, permit, etc.) and to enter, re-enter, and repossess said lands and facilities thereon, and hold the same as if the (lease, license, permit, etc.) had never been made or issued.*
- C. With respect to a deed, in the event of breach of any of the above Nondiscrimination covenants, the (Title of Sponsor) will have the right to enter or re-enter the lands and facilities thereon, and the above-described lands and facilities will there upon revert to and vest in and become the absolute property of the (Title of Sponsor) and its assigns.*

*(*Reverter clause and related language to be used only when it is determined that such a clause is necessary to make clear the purpose of Title VI.)*

The Airport must include this provision in any future (deeds, leases, licenses, permits, or similar instruments) entered into by the Sponsor/Airport with other parties for the construction or use of, or access to, space on, over, or under real property acquired or improved under Airport Improvement Program

This applies to agreements such as leases of concession space in a terminal MANDATORY TEXT

Clause for Construction/Use/Access to Real Property Acquired Under the Activity, Facility or Program

The following clauses will be included in deeds, licenses, permits, or similar instruments/agreements entered into by **(Title of Sponsor)** pursuant to the provisions of the Airport Improvement Program grant assurances.

- A. The (grantee, licensee, permittee, etc., as appropriate) for himself/herself, his/her heirs, personal representatives, successors in interest, and assigns, as a part of the consideration hereof, does hereby covenant and agree (in the case of deeds and leases add, "as a covenant running with the land") that (1) no person on the ground of race, color, or national origin, will be excluded from participation in, denied the benefits of, or be otherwise subjected to discrimination in the use of said facilities, (2) that in the construction of any improvements on, over, or under such land, and the furnishing of services thereon, no person on the ground of race, color, or national origin, will be excluded from participation in, denied the benefits of, or otherwise be subjected to discrimination, (3) that the (grantee, licensee, lessee, permittee, etc.) will use the premises in compliance with all other requirements imposed by or pursuant to the Title VI List of Pertinent Nondiscrimination Acts and Authorities.
- B. With respect to (licenses, leases, permits, etc.), in the event of breach of any of the above Non-discrimination covenants, **(Title of Sponsor)** will have the right to terminate the (license, permit, etc., as appropriate) and to enter or re-enter and repossess said land and the facilities Guidelines for Contract Provisions for Obligated Sponsors and Airport Improvement Program Projects Issued on January 20, 2023 Page 26 thereon, and hold the same as if said (license, permit, etc., as appropriate) had never been made or issued.*
- C. With respect to deeds, in the event of breach of any of the above Non-discrimination covenants, **(Title of Sponsor)** will there upon revert to and vest in and become the absolute property of **(Title of Sponsor)** and its assigns.*

(*Reverter clause and related language to be used only when it is determined that such a clause is necessary to make clear the purpose of Title VI.)

LOGAN – CACHE AIRPORT AUTHORITY BOARD
FEBRUARY 6, 2025

ATTACHMENT B

CACHE COUNTY GOVERNMENT
REVENUES WITH COMPARISON TO BUDGET
FOR THE 1 MONTHS ENDING JANUARY 01, 2025

AIRPORT FUND

		ENCUMBRANCE	YTD ACTUAL	TOTAL	BUDGET	UNEARNED	PCNT
<u>INTERGOVERNMENTAL REVENUE</u>							
277-33-70105	LOGAN CITY-SHARED NET EXP	.00	.00	.00	100,000.00	100,000.00	.0
	TOTAL INTERGOVERNMENTAL REVE	.00	.00	.00	100,000.00	100,000.00	.0
<u>MISCELLANEOUS REVENUE</u>							
277-36-10000	INTEREST	.00	.00	.00	30,000.00	30,000.00	.0
277-36-15000	GAS TAX REFUND	.00	.00	.00	8,000.00	8,000.00	.0
277-36-16000	LANDING FEES	.00	.00	.00	5,500.00	5,500.00	.0
277-36-18000	FUEL FLOW -STORAGE FEES	.00	.00	.00	20,000.00	20,000.00	.0
277-36-19000	FIRE DEPARTMENT STANDBY FEES	.00	.00	.00	5,000.00	5,000.00	.0
277-36-90000	SUNDRY REVENUE	.00	.00	.00	4,000.00	4,000.00	.0
	TOTAL MISCELLANEOUS REVENUE	.00	.00	.00	72,500.00	72,500.00	.0
<u>AIRPORT LAND LEASE REVENUES</u>							
277-37-80000	AIRPORT FEES-LAND LEASE INCOM	.00	.00	.00	113,400.00	113,400.00	.0
	TOTAL AIRPORT LAND LEASE REVE	.00	.00	.00	113,400.00	113,400.00	.0
<u>CONTRIBUTIONS & TRANSFERS</u>							
277-38-20000	CONTRIBUTION - CACHE COUNTY	.00	.00	.00	100,000.00	100,000.00	.0
277-38-90000	APPROPRIATED FUND BALANCE	.00	.00	.00	629,022.00	629,022.00	.0
	TOTAL CONTRIBUTIONS & TRANSFE	.00	.00	.00	729,022.00	729,022.00	.0
	TOTAL FUND REVENUE	.00	.00	.00	1,014,922.00	1,014,922.00	.0

CACHE COUNTY GOVERNMENT
EXPENDITURES WITH COMPARISON TO BUDGET
FOR THE 1 MONTHS ENDING JANUARY 01, 2025

AIRPORT FUND

	ENCUMBRANCE	YTD ACTUAL	TOTAL	BUDGET	UNEXPENDED	PCNT
<u>AIRPORT</u>						
277-4460-110 FULL TIME EMPLOYEES	.00	.00	.00	162,673.00	162,673.00	.0
277-4460-115 OVERTIME	.00	.00	.00	3,000.00	3,000.00	.0
277-4460-120 PART TIME EMPLOYEES	.00	.00	.00	62,428.00	62,428.00	.0
277-4460-130 EMPLOYEE BENEFITS	.00	.00	.00	114,521.00	114,521.00	.0
277-4460-210 SUBSCRIPTIONS & MEMBERSHIPS	.00	.00	.00	100.00	100.00	.0
277-4460-220 PUBLIC NOTICES	.00	.00	.00	300.00	300.00	.0
277-4460-230 TRAVEL	.00	.00	.00	4,000.00	4,000.00	.0
277-4460-240 OFFICE SUPPLIES	.00	.00	.00	1,500.00	1,500.00	.0
277-4460-250 EQUIPMENT SUPPLIES & MAINT	.00	.00	.00	46,000.00	46,000.00	.0
277-4460-251 NON CAPITALIZED EQUIPMENT	.00	.00	.00	13,000.00	13,000.00	.0
277-4460-260 BUILDING & GROUNDS	.00	.00	.00	25,000.00	25,000.00	.0
277-4460-261 SNOW REMOVAL	.00	.00	.00	65,000.00	65,000.00	.0
277-4460-262 VEGETATION CONTROL - CHEMICAL	.00	.00	.00	12,000.00	12,000.00	.0
277-4460-263 VEGETATION CONTROL - MOWING	.00	.00	.00	5,000.00	5,000.00	.0
277-4460-270 UTILITIES	.00	.00	.00	27,000.00	27,000.00	.0
277-4460-280 COMMUNICATIONS	.00	.00	.00	5,000.00	5,000.00	.0
277-4460-290 FUEL	.00	.00	.00	10,000.00	10,000.00	.0
277-4460-291 UNION PACIFIC PROPERTY LEASE	.00	.00	.00	20,000.00	20,000.00	.0
277-4460-311 PROFESSIONAL SERVICES	.00	.00	.00	1,000.00	1,000.00	.0
277-4460-330 EDUCATION & TRAINING	.00	.00	.00	44,000.00	44,000.00	.0
277-4460-510 INSURANCE	.00	.00	.00	18,000.00	18,000.00	.0
277-4460-621 MISC BOARD SERVICES/TRAVEL	.00	.00	.00	8,000.00	8,000.00	.0
277-4460-625 LOGAN FIRE - STANDBY FEES	.00	.00	.00	8,000.00	8,000.00	.0
 TOTAL AIRPORT	 .00	 .00	 .00	 655,522.00	 655,522.00	 .0

CACHE COUNTY GOVERNMENT
EXPENDITURES WITH COMPARISON TO BUDGET
FOR THE 1 MONTHS ENDING JANUARY 01, 2025

AIRPORT FUND

	ENCUMBRANCE	YTD ACTUAL	TOTAL	BUDGET	UNEXPENDED	PCNT
<u>CONTRIBUTIONS</u>						
277-4800-477 TRANSFER OUT - AIRPORT CAPITAL	.00	.00	.00	359,400.00	359,400.00	.0
TOTAL CONTRIBUTIONS	.00	.00	.00	359,400.00	359,400.00	.0
TOTAL FUND EXPENDITURES	.00	.00	.00	1,014,922.00	1,014,922.00	.0
NET REVENUE OVER EXPENDITURES	.00	.00	.00	.00	.00	.0

CACHE COUNTY GOVERNMENT
REVENUES WITH COMPARISON TO BUDGET
FOR THE 1 MONTHS ENDING JANUARY 01, 2025

CAPITAL PROJECT AIRPORT

		ENCUMBRANCE	YTD ACTUAL	TOTAL	BUDGET	UNEARNED	PCNT
477-33-15000	FED GRANT - SCASDP	.00	.00	.00	1,203,000.00	1,203,000.00	.0
477-33-44402	STATE GRANT	.00	.00	.00	862,200.00	862,200.00	.0
	TOTAL SOURCE 33	.00	.00	.00	2,065,200.00	2,065,200.00	.0
	<u>SOURCE 38</u>						
477-38-10277	TRANSFER IN - AIRPORT	.00	.00	.00	359,400.00	359,400.00	.0
	TOTAL SOURCE 38	.00	.00	.00	359,400.00	359,400.00	.0
	TOTAL FUND REVENUE	.00	.00	.00	2,424,600.00	2,424,600.00	.0

CACHE COUNTY GOVERNMENT
EXPENDITURES WITH COMPARISON TO BUDGET
FOR THE 1 MONTHS ENDING JANUARY 01, 2025

CAPITAL PROJECT AIRPORT

	ENCUMBRANCE	YTD ACTUAL	TOTAL	BUDGET	UNEXPENDED	PCNT
<u>AIRPORT</u>						
477-4460-730 IMPROVEMENTS	.00	.00	.00	2,222,600.00	2,222,600.00	.0
477-4460-740 CAPITALIZED EQUIPMENT	.00	.00	.00	202,000.00	202,000.00	.0
TOTAL AIRPORT	.00	.00	.00	2,424,600.00	2,424,600.00	.0
TOTAL FUND EXPENDITURES	.00	.00	.00	2,424,600.00	2,424,600.00	.0
NET REVENUE OVER EXPENDITURES	.00	.00	.00	.00	.00	.0

**LOGAN – CACHE AIRPORT AUTHORITY BOARD
FEBRUARY 6, 2025**

ATTACHMENT C

2022 lease 2022 lease changes

2024 lease 2024 changes

LOGAN-CACHE AIRPORT AUTHORITY GROUND LEASE AGREEMENT

This lease is made and entered into by and between the Logan-Cache Airport Authority, which shall be called the “LESSOR” in this agreement and the “LESSEE” as indicated below:

Name: _____

Address: _____

Phone: _____

Email: _____

Contact: _____

In consideration of the mutual terms and conditions contained in this agreement, the parties hereto do hereby agree as follows:

A. LEASED PREMISES

Lessor hereby leases to Lessee and Lessee hereby leases from Lessor the following Hangar Site located at the Logan-Cache Airport:

Designated Number: _____

Tax ID Number: _____

Total Site Hangar Dimensions: _____

B. RENT

1. Lessee shall pay rent to the Lessor for the Hangar Site in the amount of \$_____ per year.
2. Annual rent payments shall be payable in advance and due on or before July 1st of each year during the term of this lease. For the initial and final lease periods, the amount of rent due will be prorated for the respective periods based on the rental rate due for that period. Lessee agrees to pay a late charge of ten percent (10%) of the amount due for any amount not received within thirty (30) days of the due date.
3. The Lessor and the Lessee agree that the rent due under this agreement shall be increased by two percent (2% per year) at least the social security cost of living percentage per year. All rents due under this agreement will be increased for the cost of living adjustment as of July 1st of the year regardless of the specific date when the lease was entered into. Prepaid rent shall not be adjustable and shall be considered rent paid in full for the period prepaid.

4. The Lessee will also be assessed a one-time hookup fee of \$1,000.00 or the current Logan City connection fee, whichever is greater, for sewer and water service.
5. Lessee shall be responsible for all utility services, charges and costs of installation and maintenance. Utility services include but are not limited to water, sewer, power, gas, and telecommunications.

C. TERM

1. The initial term of this lease shall be for the following period of 10 years from:
_____ to _____
~~The lease may be renewed under the same terms and conditions for an additional ten year term by Lessee giving Lessor advance written notice at least 180 days prior to expiration of the initial term of this lease.~~
2. The lease may be terminated by either party upon written notice given at least 180 days ~~six (6) months~~ prior to termination.

D. IMPROVEMENTS

1. Lessee has the right to construct and maintain the hangar and aviation-related improvements on the premises subject to the terms of this lease.
2. Any hangars or improvements, including any modifications, must comply with the provisions of the Uniform Building Code, Uniform Fire Code, and other uniform codes and standards adopted by the City, as well as any applicable federal or state laws relating to airport structures. No hangar or permitted improvement may be erected or modified without a city building permit having first been obtained by the Lessee and permission obtained from the Lessor. Permission shall not be unreasonably withheld.
3. Upon the termination of this lease, Lessee shall have the right to remove the hangar and any improvements erected by the Lessee; provided, however, that the Lessee, upon such removal, shall leave the Hangar Site clean and free of debris, concrete, litter, abandoned equipment and materials. The removal must be completed within sixty (60) days from the date of termination. Lessor shall have the option, upon receipt of notice from the Lessee of the intention of the Lessee to remove the hangar or improvements, to purchase the hangar or improvements at a fair market value. Lessor shall exercise the option by written notice thereof within thirty (30) days of the notice of intention to terminate.

E. RESTRICTIONS

1. The premises' use must be primarily devoted to housing and maintaining aircraft and aviation-related equipment. Peripheral use for storage of other non-hazardous items is allowed. Lessee may not use the premises primarily for non-aviation related purposes.
2. Storage of fuel on premises is not allowed except in regular, built-in aircraft fuel tanks. Fuel dispensing from permanently-installed containers at the fuel farm may be allowed, but only where the tanks and pumps are installed in accordance with fire and building codes, and where the fuel is used only by the Lessee. Selling fuel to other parties is not allowed unless the Lessee meets standards established by the Logan-Cache Airport Authority and pays a dispensing fee to the Logan-Cache Airport Authority.

3. Users may self-fuel their own aircraft in the designated area away from the hangars. Fuel hauled to the airport for this purpose may not be kept inside the hangars. Aircraft are not allowed to be fueled inside the hangars.
4. No signs may be displayed on the exterior of any hangar or improvement, other than the hangar number, without the prior written consent of the Lessor. Such approval shall not be unreasonably withheld.

F. COMPLIANCE WITH APPLICABLE LAWS

Lessee shall at all times comply with all applicable federal, state, county and city laws, rules, ordinances, and regulations for the use of the hangar, airport facilities, and the airport including, but not limited to, those rules and regulations promulgated by the Federal Aviation Administration, as well as the airport zoning regulations contained in the Master Plan adopted by the city for the Logan-Cache Airport. Any violation of any applicable federal, state, county and city laws, rules, ordinances and regulations shall be deemed a violation of this lease.

G. LESSOR RESERVATIONS

1. Lessor reserves the exclusive right to develop or improve the airport or any portions thereof and take any necessary action or steps to protect the aerial approaches of the airport against obstructions including, but not limited to, height, building and use restrictions as to the premises leased hereunder if Lessor reasonably deems that the buildings and improvements or the use thereof by the Lessee constitutes an obstruction or danger to the safe operation of the airport.
2. Lessor shall reserve the right to enter any hangar at reasonable times for the purpose of inspecting the premises for Fire Code issues, safety factors and compliance with the Uniform Building Code and other applicable federal, state and county codes and requirements, and to verify the identification and location of aircraft located within the hangar upon ten (10) days notice.

H. DEFAULT

In the event the Lessee fails to pay any rental payments as required by the terms of this lease or in the event that the Lessee fails to comply with any other provision of this agreement, Lessor shall have the right, after thirty (30) days notice to the Lessee of such default or failure to comply and upon the failure of the Lessee to cure the default, to terminate this agreement and to remove the Lessee from the premises. Upon such removal, the Lessor may retain possession of the Hangar Site premises and lease the same to other parties as it may, in its discretion, deem reasonable and necessary. Upon such termination, the Lessee agrees to peaceably vacate the premises and to remove the hangar, improvements, and any equipment located therein within sixty (60) days from the date of said termination. Upon the failure to remove the hangar, improvements, or equipment within that time period, such hangar, improvements, or equipment shall revert to the Lessor or be removed by the Lessor and Lessee shall be responsible for any and all expenses incurred by Lessor for the removal. Any amounts that are the responsibility of the Lessee are due and payable to Lessor upon presenting proof of the expenses incurred to the Lessee. Lessor retains its option to acquire the hangar and any improvements as provided in Paragraph D.

I. PROHIBITION AGAINST ASSIGNMENT

This lease may not be assigned nor sublet without the prior written consent of the Lessor. Said consent shall not be unreasonably withheld. In the event the hangar is sold, the new owner will be required to execute a new lease agreement **with Lessor.**

J. INDEMNIFICATION AND LIABILITY INSURANCE

1. Lessee shall indemnify and hold the Lessor harmless from any and all damages incurred by Lessee, any of its affiliates, guests, and/or invitees, and Lessee shall indemnify and hold Lessor harmless for any and all damages incurred to the property of the Lessee. Lessee further agrees to indemnify ~~any person or property of the Lessee~~ and to protect and save harmless the Lessor from any liability or expenses of defense or otherwise by reason of any injury to any person or any property upon the premises or surrounding areas during the term of this lease including reasonable attorney's fees and cost.
~~If Lessee maintains a pre-existing fuel tank upon the premises, Lessee shall obtain and maintain a general liability insurance policy designating the Lessor as a co-insured party with minimum coverage of \$1,000,000.00 general liability. Lessee shall provide Lessor a certificate of insurance on an annual basis showing the above coverage.~~
2. Lessee shall obtain and maintain a general liability insurance policy, in full force and effect at all times during the term of the lease, with minimum general liability coverage of \$1,000,000.00 combined single limit per occurrence. The policies are to contain, or be endorsed to contain the following provisions:
 - a. The Logan-Cache Airport Authority, its officers, officials, employees and volunteers are to be covered as additional insured. The coverage shall contain no special limitations on the scope of protection afforded to the Logan-Cache Airport Authority, its officers, officials, employees and volunteers.
 - b. Lessee's insurance shall be primary insurance as respect to the Logan-Cache Airport Authority, its officers, officials, employees and volunteers. Any insurance maintained by the Logan-Cache Airport Authority, its officers, officials, employees and volunteers shall be in excess of the lessee's insurance and shall not contribute with it.
 - c. Lessee shall provide Lessor a certificate of insurance on an annual basis showing the above coverage. **If no current certificate of insurance is provided to Lessor, the Lessee will be deemed to be in default under this agreement.**

K. SUBORDINATION

This lease shall be subordinate to the provisions of any existing or future agreement between the Lessor and the United States relative to the operation or maintenance of the airport if such agreement is required as a condition precedent to the obtaining or expenditure of federal funds for the development and use of the airport.

L. CONSTRUCTION PERFORMANCE

If Lessee is building a hangar, Lessee agrees to obtain a building permit within ninety (90) (30) days from the date Lessee signs this agreement. It is also agreed that building will commence within one hundred twenty (120) (90) days from the Lessee signing this agreement. An extension on the building of the hangar may be requested from the Lessor. The extension request must be made to the Lessor in writing if more than one hundred twenty (120) days is required. be made to the Lessor in writing if more than one hundred twenty (120) days is required. The hangar must be completed within one hundred eighty (180) days of commencement of construction. The Lessee is responsible for securing the construction site to assure that it is safe for tenants and visitors, and does not obstruct or interfere with business activities at the airport.

M. GOVERNING LAW

This agreement is to be interpreted in accordance with the laws of the State of Utah.

N. NOTICE

Should Notice be required under this agreement, any and all correspondence shall be provided in writing to the parties and given by either personal delivery with a signed acknowledgment of receipt; by registered or certified mail, postage prepaid, with return receipt requested; by an established, nationally-recognized commercial courier service, charge prepaid, with written proof of delivery; or by electronic mail with confirmation copy sent by an established, nationally-recognized commercial courier service, as provided above, within 24 hours after the time and date of the electronic mail transmission. Written Notice shall be addressed to the following designated representatives:

Lessee:

Name: _____

Address: _____

Email: _____

Lessor:

Name: _____

Address: _____

Email: _____

IN WITNESS THEREOF, the parties have executed the agreement in duplicate, each of which shall be deemed an original, on the _____ day of _____, 20____.

LESSOR:

Logan-Cache Airport Authority

By: _____
Board Chair

LESSEE:

By: _____
Signature

LOGAN – CACHE AIRPORT AUTHORITY BOARD
FEBRUARY 6, 2025

ATTACHMENT D

Self Serve Storage Tank Reconsideration

1 message

Scott Weaver <sweaver@leaviation.com>

Tue, Feb 4, 2025 at 9:11 AM

To: "bob.low@cachecounty.gov" <bob.low@cachecounty.gov>

Cc: "ryansnowcpa@gmail.com" <ryansnowcpa@gmail.com>, Brett Hugie <Brett.Hugie@cve.com>, "John Kerr - Logan-Cache Airport - UT (kerrjohna@comcast.net)" <kerrjohna@comcast.net>, Janeen Allen <janeen.allen@cachecounty.gov>, "david.zook@cachecounty.gov" <david.zook@cachecounty.gov>, "holly.daines@loganutah.org" <holly.daines@loganutah.org>

Good morning, Mr. Low,

I am requesting the Airport Authority's reconsideration in allowing Leading Edge Aviation to continue with installing a self-serve avgas storage tank on the south end of the ramp. March 2022 the Airport Authority approved Leading Edge Aviation to install a 2,000-gallon avgas self-service fuel tank. Shortly after I began the project Mr. John Kerr and Mr. Bill Francis had asked me to stop the project as they wanted to explore other options, and I complied. Attached is the location site Armstrong approved and my engineering drawing for the tank.

We would like to increase the size of the tank and install a 15,000-gallon avgas self-serve storage tank this Summer.

Thank you for your reconsideration,

Scott Weaver
Leading Edge Aviation

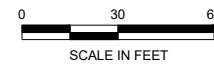
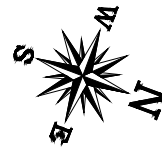
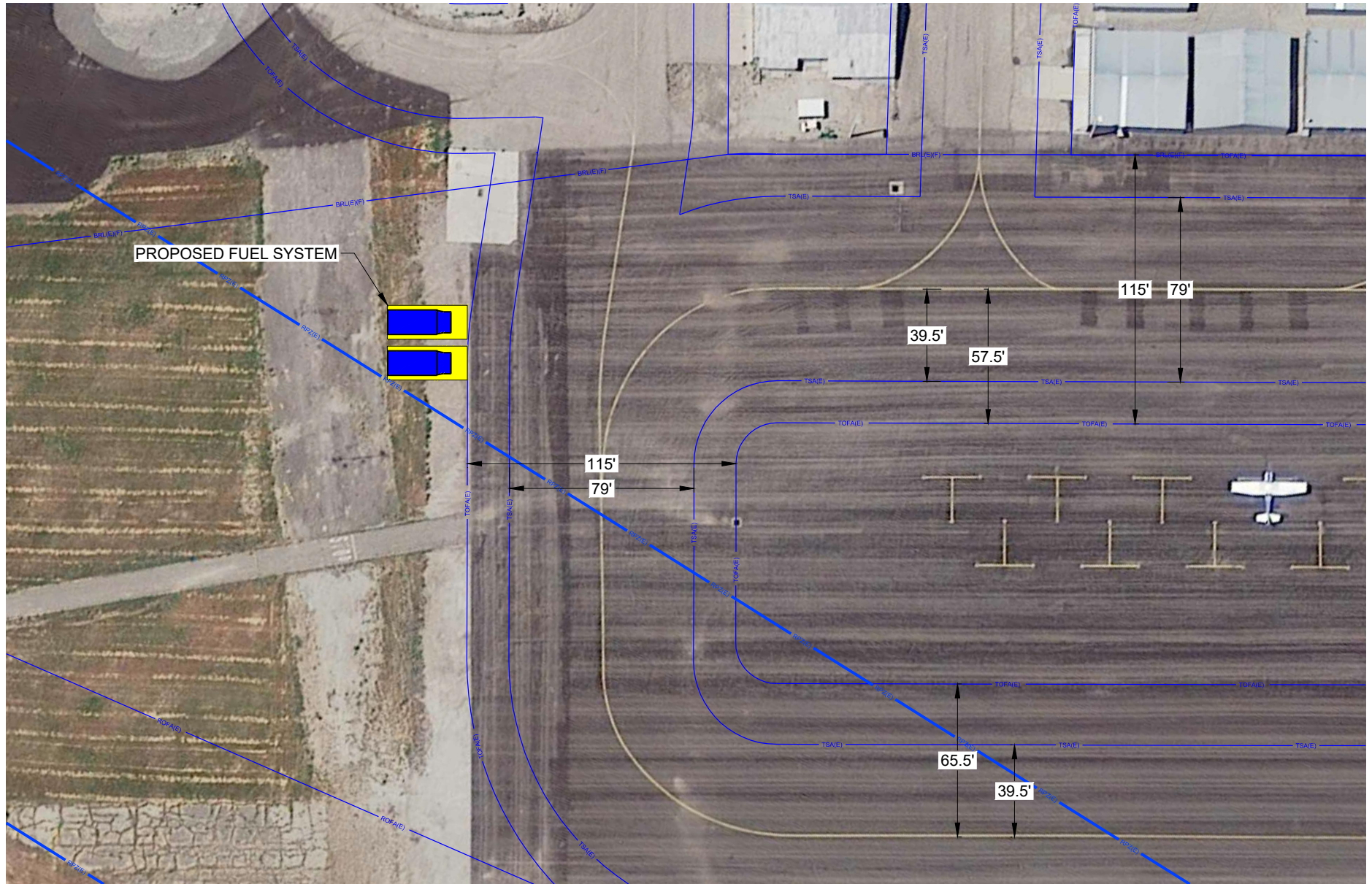
2 attachments



Fuel System-Exhibit.pdf
917K



Logan_UT Plan Set 011720.pdf
9070K



LOGAN-CACHE AIRPORT LOGAN, UTAH	
FUEL SYSTEM EXHIBIT	
	
PLANNING ENGINEERING CONSTRUCTION	
www.armstrongaerobuild.com	

SHEET INDEX	
SHEET#	SHEET TITLE
T-100	COVER SHEET + SITE DATA
T-110	GENERAL NOTES
T-120	ABBREVIATIONS, LEGEND AND NOTES
C-100	EXISTING CONDITIONS, EROSION & SEDIMENT CONTROL PLAN
C-200	PROPOSED SITE PLAN
D-100	CONSTRUCTION DETAILS
D-200	SIGNAGE & TANK LABELING DETAILS & SPECIFICATIONS
M-100	TANK SHOP DRAWINGS
M-200	FUELING SYSTEM EQUIPMENT SPECIFICATIONS
M-210	FUELING SYSTEM EQUIPMENT SPECIFICATIONS
M-220	FUELING SYSTEM EQUIPMENT SPECIFICATIONS
M-230	FUELING SYSTEM EQUIPMENT SPECIFICATIONS
M-240	FUELING SYSTEM EQUIPMENT SPECIFICATIONS
E-100	ELECTRICAL NOTES
E-200	ELECTRICAL SITE, GROUNDING & BONDING PLAN
E-300	ELECTRICAL DIAGRAMS & PANELBOARD SCHEDULE
E-400	NEC HAZARD ZONE DEFINITION PLAN & DETAILS

SCOPE OF WORK

1. INSTALL SEDIMENT & EROSION CONTROL MEASURES AS DEFINED HEREIN IN ACCORDANCE W/ STATE, COUNTY & AIRPORT REQUIREMENTS.
2. EXCAVATE & PREPARE SOIL FOR NEW SLAB AS DIRECTED HEREIN.
3. INSTALL NEW ELECTRICAL WIRING AND AS DEFINED HEREIN.
4. INSTALL NEW REINFORCED TANK SLAB.
5. INSTALL NEW ELECTRICAL SERVICE CONNECTION.
6. INSTALL NEW 2,000 GALLON AST W/ DISPENSER, HOSE REEL & ASSOCIATED EQUIPMENT FOR STORAGE & DISPENSING OF AVIATION GASOLINE (AVGAS).

SPECIAL INSPECTIONS

SPECIAL INSPECTIONS SHALL BE PERFORMED IN ACCORDANCE WITH IBC 2018

CONCRETE CONSTRUCTION (IBC 1704.4)

1. INSPECTIONS OF REINFORCING STEEL
2. PLACEMENT & CURING
3. FORM WORK
4. INSPECT BOLTS TO BE INSTALLED IN CONCRETE PRIOR TO & DURING PLACEMENT OF CONCRETE
5. FRESH CONCRETE SHALL BE SAMPLED TO FABRICATE SPECIMENS FOR STRENGTH TESTS, PERFORM SLUMP & AIR CONTENT TESTS, & DETERMINE TEMPERATURE OF CONCRETE.
6. INSPECT FORM WORK FOR SHAPE, LOCATION & DIMENSIONS OF CONCRETE MEMBER BEING FORMED.

SOILS (IBC 1704.7)

1. SOIL SITE PREPARATION
2. FILL PLACEMENT
3. IN PLACE DENSITY
4. SUBGRADE FOR FOUNDATIONS OR SLABS

DESIGN TEAM / APPLICANT INFORMATION

eE

N.D. ERYOU, PhD, PE
CONSULTING ENGINEER
1460 BREEZY WAY
SPRING HILL, FL 34608
PHONE: (352) 684-7275 FAX: (800) 660-6724
EMAIL: alex@eryouengineering.com

PROPERTY INFORMATION

LOGAN-CACHE AIRPORT
2500 NORTH AIRPORT DRIVE
LOGAN, UTAH 84321

CONTRACTOR INFORMATION

AMERICAN ENVIRONMENTAL ASSESSMENT CORPORATION
3977 AVIATION LOOP
SANFORD, FLORIDA 32773

PHONE: (631) 586-2000

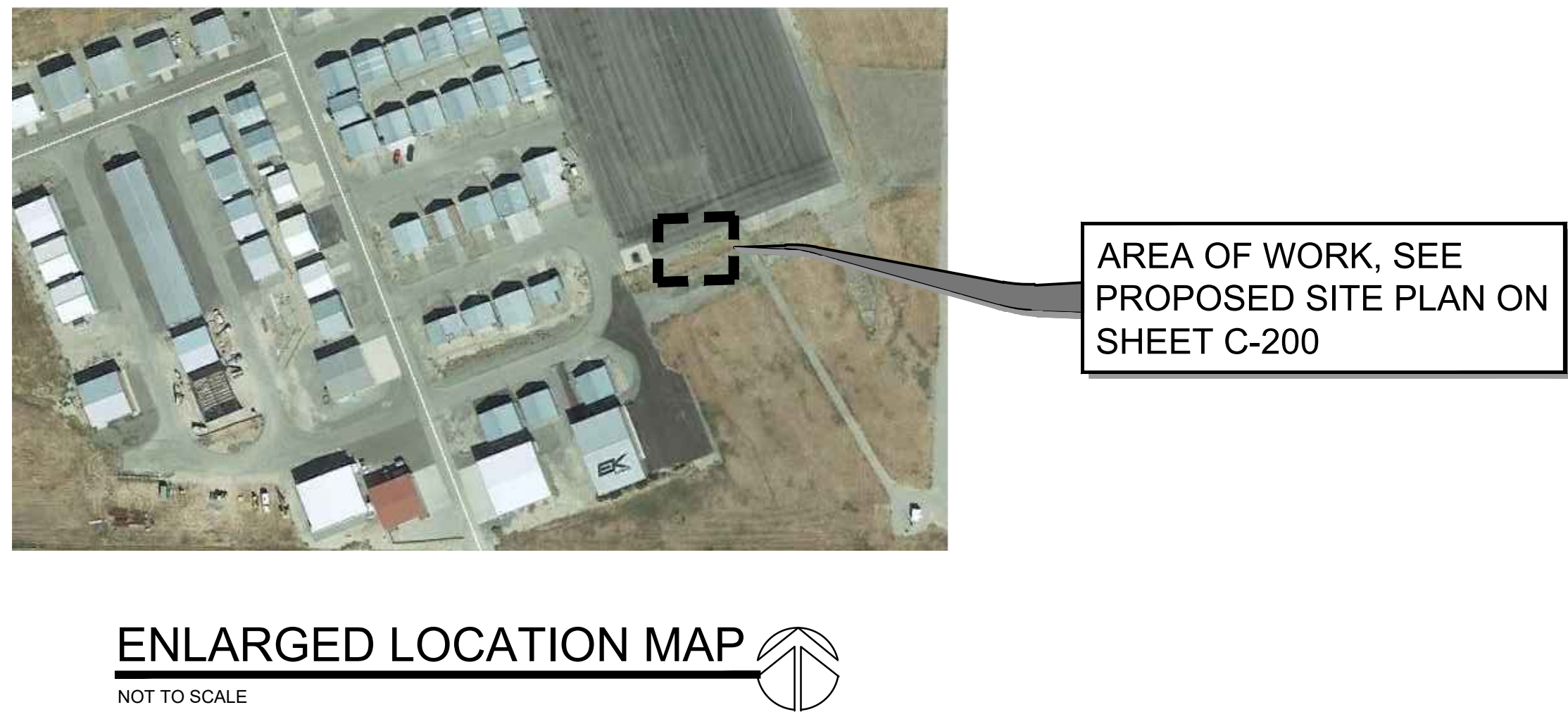
POINT OF CONTACT: PAUL SUNDBY
PSUNDBY@AMERICAN-ENVIRONMENTAL.NET

FACILITY OPERATOR INFORMATION	
LEADING EDGE AVIATION 2500 NORTH AIRPORT DRIVE, SUITE 2 LOGAN, UTAH 84321 PHONE: (435) 752-5955	

GENERAL NOTES

1. THE CONTRACTOR SHALL REVIEW ALL DOCUMENTS AND VERIFY ALL DIMENSIONS AND FIELD CONDITIONS AND SHALL CONFIRM THAT WORK IS BUILDABLE AS SHOWN. ANY CONFLICTS OR OMISSION, ETC., SHALL BE IMMEDIATELY REPORTED TO THE ENGINEER FOR CLARIFICATION PRIOR TO THE PERFORMANCE OF ANY WORK IN QUESTION.
2. DO NOT SCALE DRAWINGS. WRITTEN DIMENSIONS SHALL GOVERN IN ALL INSTANCES. IN CASE OF CONFLICT, NOTIFY THE ENGINEER.
3. CONTRACTOR SHALL COORDINATE AND OBTAIN ALL NECESSARY APPROVALS AND INSPECTIONS AS REQUIRED BY LOCAL GOVERNING JURISDICTIONS.
4. THE CONTRACTOR IS EXPECTED TO KEEP PREMISES CLEAN DURING CONSTRUCTION. TRASH WILL NOT BE ALLOWED TO ACCUMULATE IN THE SPACE DURING CONSTRUCTION. ALL DEBRIS SHALL BE REMOVED DAILY. FINAL CLEAN UP AND REPAIR IS PART OF THIS WORK. REMOVE ALL DUST, DEBRIS, OILS, STAINS, FINGERPRINTS AND LABELS FROM ALL EXPOSED FINISHED SURFACES. SAFE WORKING AREA AND CONDITIONS SHALL BE MAINTAINED AT ALL TIMES.
5. IT IS THE CONTRACTOR'S RESPONSIBILITY TO FURNISH AND INSTALL ALL WORK FIXTURES AND EQUIPMENT NECESSARY TO COMPLETE PROJECT AS PER PLANS. THE CONTRACTOR IS TO DELIVER PROJECT CLEAN AND READY FOR USE AS APPROVED BY OWNER.
6. THE CONTRACTOR SHALL VERIFY LOCATIONS OF EXISTING UTILITIES BEFORE COMMENCING WORK. CARE SHALL BE TAKEN TO PROTECT ALL UTILITIES WHICH ARE TO REMAIN.
7. ALL REQUESTS FOR SUBSTITUTIONS OF ANY SPECIFIED ITEMS SHALL BE SUBMITTED IN WRITING TO THE ENGINEER AND WILL BE CONSIDERED ONLY IF THE ALTERNATE PROPOSED IS PROVEN TO BE MORE ADVANTAGEOUS TO THE OWNER WITH RESPECT TO DELIVERY DATE, QUALITY, OR COST. UNDER NO CIRCUMSTANCES WILL THE ENGINEER BE REQUIRED TO PROVE THAT A PRODUCT PROPOSED FOR SUBSTITUTION IS OR IS NOT OF EQUAL QUALITY TO THE PRODUCT SPECIFIED.
8. PERFORM ALL WORK IN ACCORDANCE WITH ACCEPTED CONSTRUCTION STANDARDS. ALL CONSTRUCTION SHALL BE IN STRICT ACCORDANCE WITH THE PLANS AND SPECIFICATIONS UNLESS A VARIANCE IS APPROVED BY THE LANDLORD AND OR ENGINEER.
9. CONTRACTOR SHALL BE RESPONSIBLE FOR A COMPLETE AND OPERATIONAL TENANT SPACE, INCLUDING ALL FINISHES, MECHANICAL, ELECTRICAL AND PLUMBING SYSTEMS AND FIRE PROTECTION SYSTEMS.
10. ALL WORK PERFORMED SHALL BE IN STRICT COMPLIANCE WITH GOVERNING FEDERAL, STATE, AND LOCAL BUILDING CODE REQUIREMENTS, EXECUTED IN ACCORDANCE WITH ACCEPTED INDUSTRY STANDARDS AND SHALL CONFORM TO SPECIFIC REGULATIONS AS MANDATED BY THE OWNER, THE TENANT, AND THE ENGINEER.
11. THESE DRAWINGS ARE THE PROPERTY OF N.D. EYROU, PHD, PE CONSULTING ENGINEER, INC. AND ARE NOT TO BE REPRODUCED OR COPIED IN WHOLE OR PART. THESE DRAWINGS ARE TO BE USED FOR THE PROJECT AND SITE SPECIFICALLY IDENTIFIED HEREIN AND ARE NOT TO BE USED ON ANY OTHER PROJECT.

INSTALLATION OF A NEW ABOVE GROUND FUEL TANK FOR LEADING EDGE AVIATION @ LOGAN-CACHE AIRPORT



CODE REFERENCES

- INTERNATIONAL BUILDING CODE (2018)
- INTERNATIONAL FUEL GAS CODE (2018)
- ICC INTERNATIONAL MECHANICAL CODE (2018)
- INTERNATIONAL FIRE CODE (2018)
- NATIONAL ELECTRICAL CODE, ARTICLE 515, BULK STORAGE PLANTS
- NFPA ~ NATIONAL ELECTRICAL CODE (2018)
- NFPA-1 ~ LIFE SAFETY CODE
- NFPA-704 ~ STANDARD FOR IDENTIFICATION OF HAZARDOUS MATERIALS
- NFPA 407 ~ AIRCRAFT FUEL SERVICING
- NFPA 30 ~ FLAMMABLE AND COMBUSTIBLE LIQUIDS CODE
- NFPA 70 ~ NATIONAL ELECTRIC CODE (2011)
- AMERICAN PETROLEUM INSTITUTE, #1529 (AVIATION FUELING HOSE)
- AMERICAN PETROLEUM INSTITUTE, #1542 (AIRPORT EQUIPMENT MARKING)
- LOCAL UTILITY AUTHORITY REGULATIONS
- (IECC) INTERNATIONAL ENERGY CONSERVATION CODE (2018)

RECOGNIZED STANDARDS & GUIDELINES

- UTAH DEPARTMENT OF ENVIRONMENTAL QUALITY
- INTERNATIONAL BUILDING CODE (2018)
- NATIONAL ELECTRICAL CODE, ARTICLE 515, BULK STORAGE PLANTS
- NFPA 407, AIRCRAFT FUEL SERVICING
- NFPA 30, FLAMMABLE AND COMBUSTIBLE LIQUIDS CODE
- AMERICAN PETROLEUM INSTITUTE, #1542-AIRPORT EQUIPMENT MARKING
- FAA ADVISORY CIRCULAR 150/5300-13, AIRPORT DESIGN

[illegible]

NOTICE
IT IS A VIOLATION OF LAW FOR ANY
PERSON, UNLESS ACTING UNDER THE
DIRECTION OF A PROFESSIONAL
ENGINEER, OR LICENSED ARCHITECT, TO
ALTER THIS DRAWING

<h1>N. D. Eryou, PhD, PE</h1> <h2>Consulting Engineer</h2>	<h3>Southwest Florida Office</h3> <p>5051 Castellro Drive, Suite 244 Naples, Florida 34103</p> <p>Phone: (352) 684-7275 Fax (800) 660-6724</p> <p>Email: alex@eryouengineering.com</p>	<h3>Central Florida Office</h3> <p>1460 Breezy Way Spring Hill, FL 34608</p> <p>Phone: (352) 684-7275 Fax (800) 660-6724</p> <p>Email: alex@eryouengineering.com</p>
--	--	--



LEADING EDGE AVIATION
2500 NORTH AIRPORT DRIVE
LOGAN, UTAH 81321



3977 AVIATION LOOP, SANFORD, FLORIDA 32773
PHONE: (631) 586-2000

INSTALLATION OF A NEW
ABOVE GROUND FUEL TANK
LEADING EDGE AVIATION
LOGAN-CACHE AIRPORT
2500 NORTH AIRPORT DRIVE
LOGAN, UTAH 81321

SHEET DESCRIPTION:

COVER SHEET & SITE DATA

SEAL & SIGNATURE	DATE: DECEMBER 2019
	PROJECT NO.: AEAC-LOGAN
	DRAWING BY: MSK
	CHK. BY: AGN
	DWG No:
	T-100
BRIAN E. LEWIS, P.E. UTAH P.E.# 5013586-2203 EXP. DATE: 3/31/2021	CADD FILE NO. LOGAN-CACHE-Set.dwg

[edit]

Materials that will not burn under typical fire conditions (e.g. carbon dioxide), including intrinsically noncombustible materials such as concrete, stone and sand (Materials that will not burn in air when exposed to a temperature of [820 °C (1,500 °F)] for a period of 5 minutes)
Materials that require considerable preheating, under all ambient temperature conditions, before ignition and combustion can occur (e.g. mineral oil). Includes some finely divided suspended solids that do not require heating before ignition can occur. Flash point at or above 93 °C (200 °F).
Must be moderately heated or exposed to relatively high ambient temperature before ignition can occur (e.g. diesel fuel) and some finely divided suspended solids that do not require heating before ignition can occur. Flash point between 38 and 93 °C (100 and 200 °F).
Liquids and solids (including finely divided suspended solids) that can be ignited under almost all ambient temperature conditions (e.g. gasoline). Liquids having a flash point below 23 °C (73 °F) and having a boiling point at or above 38 °C (100 °F) or having a flash point between 23 and 38 °C (73 and 100 °F).
Will rapidly or completely vaporize at normal atmospheric pressure and temperature, or is readily dispersed in air and will burn readily (e.g. acetylene, diethylzinc). Includes pyrophoric substances. Flash point below 23 °C (73 °F).

Poses no health hazard, no precautions necessary and would offer no hazard beyond that of ordinary combustible materials (e.g. wood)
Exposure would cause irritation with only minor residual injury (e.g. acetone)
Intense or continued but not chronic exposure could cause temporary incapacitation or possible residual injury (e.g. diethyl ether)
Short exposure could cause serious temporary or moderate residual injury (e.g. chlorine)
Very short exposure could cause death or major residual injury (e.g. hydrogen cyanide, phosphine, carbon monoxide, sarin, hydrofluoric acid)

reactive with water (e.g. [helium](#))

and pressures (e.g. [propene](#))

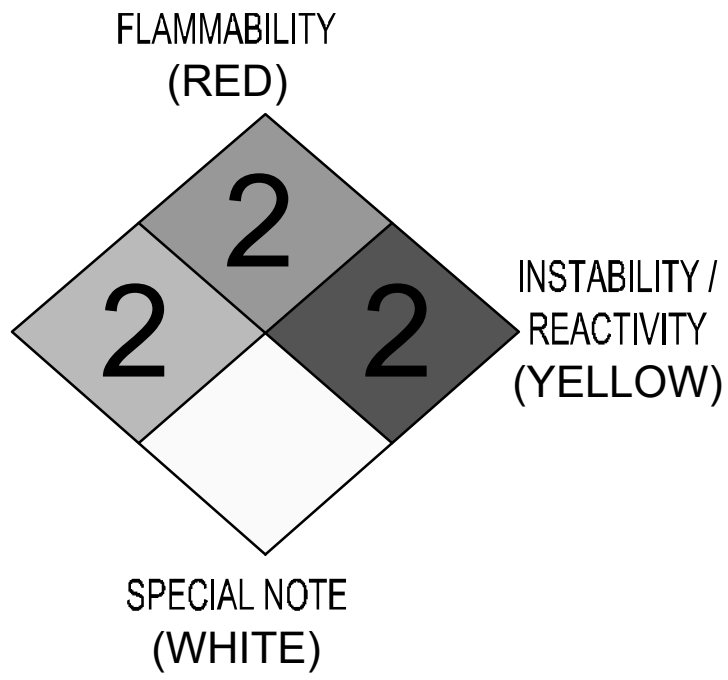
and pressures, reacts violently with water, or may form explosive mixtures with water (e.g. [white phosphorus](#), [potassium](#), [sodium](#))


strong initiating source, must be heated under confinement before initiation, reacts explosively with water, or will detonate if severely shocked (e.g. [ammonium nitrate](#), [chlorine trifluoride](#))

at normal temperatures and pressures (e.g. [nitroglycerin](#), [chlorine azide](#), [chlorine dioxide](#))

	Oxidizer, allows chemicals to burn without an air supply (e.g. potassium perchlorate, ammonium nitrate, hydrogen peroxide).
	Reacts with water in an unusual or dangerous manner (e.g. cesium, sodium, sulfuric acid).
	Simple asphyxiant gas. Specifically limited to the following gases: nitrogen, helium, neon, argon, krypton and xenon. ^[2]

L	ANGLE	D.S.P.	DRY STANDPIPE	HORIZ.	HORIZONTAL	RESIL.	RESILIENT
@	AT	DWG.	DRAWINGS	HR.	HOUR	RESIL.	RESILIENT
Q	CENTERLINE	E	EXISTING	HGT.	HEIGHT	R.M.	ROOM
o	DIAMETER	EA.	EACH	I.D.	INSIDE DIAMETER (DIM.)	R.O.	ROUGH OPENING
⊥	PERPENDICULAR	E.J.	EXPANSION JOINT	INSUL.	INSULATION	RWD.	REDWOOD
□	CHANNEL	EL.	ELEVATION	INT.	INTERIOR	R.W.L.	RAIN WATER LEADER
#	POUND OR NUMBER	ELEC.	ELECTRICAL	JAN.	JANITOR	S.	SOUTH
(E)	EXISTING	ELEV.	ELEVATOR	JT.	JOINT	S.C.D.	SOLID CORE
ACOUS.	ACOUSTICAL	EMER.	EMERGENCY	KIT.	KITCHEN	S.C.D.	SEAT COVER DISPENSER
A.D.	AREA DRAIN	ENCL.	ENCLOSURE	LAB.	LABORATORY	SCHED.	SCHEDULE
ADJ.	ADJUSTABLE	E.P.	ELECTRICAL PANEL	LAM.	LAMINATE	S.D.	SOAP DISPENSER
A.F.F.	ABOVE FINISH FLOOR	EQ.	EQUAL	LAV.	LAVATORY	SECT.	SECTION
AGGR.	AGGREGATE	EQPT.	EQUIPMENT	LKR.	LOCKER	SH.	SHELF
AL	ALUMINUM	ETC.	ETCETERA	LT.	LIGHT	SHR.	SHOWER
APPROX.	APPROXIMATE	E.W.C.	ELECTRIC H200 COOLER	MAX.	MAXIMUM	SHT.	SHEET
ARCH.	ARCHITECTURAL	(E)	EXISTING	M.C.	MEDICINE CABINET	SIM.	SIMILAR
ASB.	ASBESTOS	EXIST.	EXISTING	MECH.	MECHANICAL	S.N.D.	SANITARY NAPKIN DISPENSER
ASBO	AS SELECTED BY OWNER	EXPO.	EXPOSED	MEMB.	MEMBRANE	S.N.R.	SANITARY NAPKIN RECEPTACLE
ASPH.	ASPHALT	EXP.	EXPANSION	MTL.	METAL	SNT.	SEALANT
BD.	BOARD	EXT.	EXTERIOR	MFR.	MANUFACTURER	SPEC.	SPECIFICATION
BITUM.	BITUMINOUS	F.A.	FIRE ALARM	MH.	MANHOLE	SQ.	SQUARE
BLDG.	BUILDING	F.B.	FLAT BAR	MIN.	MINIMUM	S.S.	STAINLESS STEEL
BLK.	BLOCK	F.D.	FLOOR DRAIN	MIR.	MIRROR	S.S.K.	SERVICE SINK
BLKG.	BLOCKING	FDN.	FOUNDATION	MISC.	MISCELLANEOUS	STA.	STATION
BM.	BEAM	F.E.	FIRE EXTINGUISHER	M.O.	MASONRY OPENING	STD.	STANDARD
BOT.	BOTTOM	F.E.G.	FIRE EXTINGUISHER CAB	MTD.	MOUNTED	STL.	STEEL
B.O.	BY OWNER	F.H.C.	FIRE HOSE CABINET	MUL.	MULLION	STOR.	STORAGE
B.T.B.	BACK TO BACK	FIN.	FINISH	MW	MONITORING WELL	STR.L.	STRUCTURAL
CAB.	CABINET	FL.	FLOOR	N.	NEW	SUSP.	SUSPENDED
C.B.	CATCH BASIN	FLASH.	FLASHING	N.I.C.	NOT IN CONTRACT	SYM.	SYMMETRICAL
CEM.	CEMENT	FLUOR.	FLUORESCENT	NO. or #	NUMBER	TRD.	TREAD
CER.	CERAMIC	F.O.C.	FACE OF CONCRETE	NOM.	NOMINAL	T.B.	TOWEL BAR
C.I.	CAST IRON	F.O.F.	FACE OF FINISH	N.T.S.	NOT TO SCALE	T.C.	TOP OF CURB
CLF	CHAIN LINK FENCE	F.O.S.	FACE OF STUDS	O.A.	OVERALL	TEL.	TELEPHONE
CLG.	CEILING	FPRF.	FIREPROOF	OBS.	OBSURE	TER.	TERRAZZO
CLO.	CLOSET	F.S.	FOOT SIZE	O.C.	ON CENTER	T.&G.	TONGUE AND GROOVE
CLR.	CLEAR	FT.	FOOT or FEET	O.D.	OUTSIDE DIAMETER (DIM.)	THK.	THICK
CNTR.	CONTRACTOR	F.T.	FIRE TREATED	OFF.	OFFICE	T.O.	TRIMED OPENING
COL.	COLUMN	FTG.	FOOTING	OPNG.	OPENING	T.P.	TOP OF PAVEMENT
CONC.	CONCRETE	FURR.	FURRING	OPP.	OPPOSITE	T.P.D.	TOILET PAPER DISPENSER
CONSTR.	CONSTRUCTION	F&I	FINISH AND INSTALL	PRCST.	PRECAST	T.V.	TELEVISION
CONT.	CONTINUOUS	FUT.	FUTURE	PL.	PLATE	T.W.	TOP OF WALL
CORR.	CORRIDOR	F.W.P.	FABRIC WRAPPED PANEL	P.LAM.	PLASTIC LAMINATE	TYL.	TYPICAL
CTSK.	COUNTERSUNK	G.A.	GALVE	PLAS.	PLASTER	U.S.	UNDERSIDE
CTR.	CENTER	GALV.	GALVANIZED	PLYWD.	PLYWOOD	UNF.	UNFINISHED
DBL.	DOUBLE	G.B.	GRAB BAR	PR.	PAIR	U.O.N.	UNLESS OTHERWISE NOTED
DEPT.	DEPARTMENT	G.C.	GENERAL CONTRACTOR	PT.	POINT	UR.	URINAL
D.F.	DRINKING FOUNTAIN	G.L.	GLASS/GLAZING	P.T.D.	PAPER TOWEL DISPENSER	V.C.T.	VINYL COMPOSITION TILE
DET.	DETAIL	GND.	GROUND	P.T.D/R	COMBINATION PAPER TOWEL DISPENSER & RECEPTACLE	VERT.	VERTICAL
DIA.	DIAMETER	GR.	GRADE	Q.T.	QUARRY TILE	VEST.	VESTIBULE
DIM.	DIMENSION	GYP.	GYPSUM	R	RELOCATE	V.I.F.	VERIFY IN FIELD
DISP.	DISPENSER	GWB	GYPSUM WALL BOARD	R	RELOCATE	W.	WEST
DN.	DOWN	H.B.	HOME BID	RAD.	RADIUS	W/	WITH
D.O.	DOOR OPENING	H.C.	HOLLOW CAB	R.D.	ROOF DRAIN	W.C.	WATER CLOSET
DR.	DOOR	HDWD.	HARDWOOD	REF.	REFERENCE	WD.	WOOD
DS.	DOWNSPOUT	HDWE.	HARDWARE	REFR.	REFRIGERATOR	W/O	WITHOUT
DWR.	DRAWER	H.M.	HOLLOW METAL	RCTR.	REGISTER	WP.	WATERPROOF
				REFIN.	REFINISHED	WSCOT.	WAINSCOT
						WT.	WEIGHT



HAZARD CLASS	FLAMMABILITY (RED)	INSTABILITY / REACTIVITY (YELLOW)	SPECIAL NOTE (WHITE)	HEALTH (BLUE)	
IA	3	0	-	1	

ISSUES/REVISIONS

[illegible]

IT IS A VIOLATION OF LAW FOR ANY
PERSON, UNLESS ACTING UNDER THE
DIRECTION OF A PROFESSIONAL
ENGINEER, OR LICENSED ARCHITECT, TO
ALTER THIS DRAWING

<h1>N. D. Eryou, PhD, PE</h1> <h2>Consulting Engineer</h2>	<p>Southwest Florida Office</p>	<p>5051 Castello Drive, Suite 244 Naples, Florida 34103</p> <p>Phone: (352) 684-7275 Fax (800) 660-6724</p> <p>Email: alex@eryouengineering.com</p>	<p>Central Florida Office</p> <p>1460 Breezy Way Spring Hill, FL 34608</p> <p>Phone: (352) 684-7275 Fax (800) 660-6724</p> <p>Email: alex@eryouengineering.com</p>
--	---------------------------------	---	--



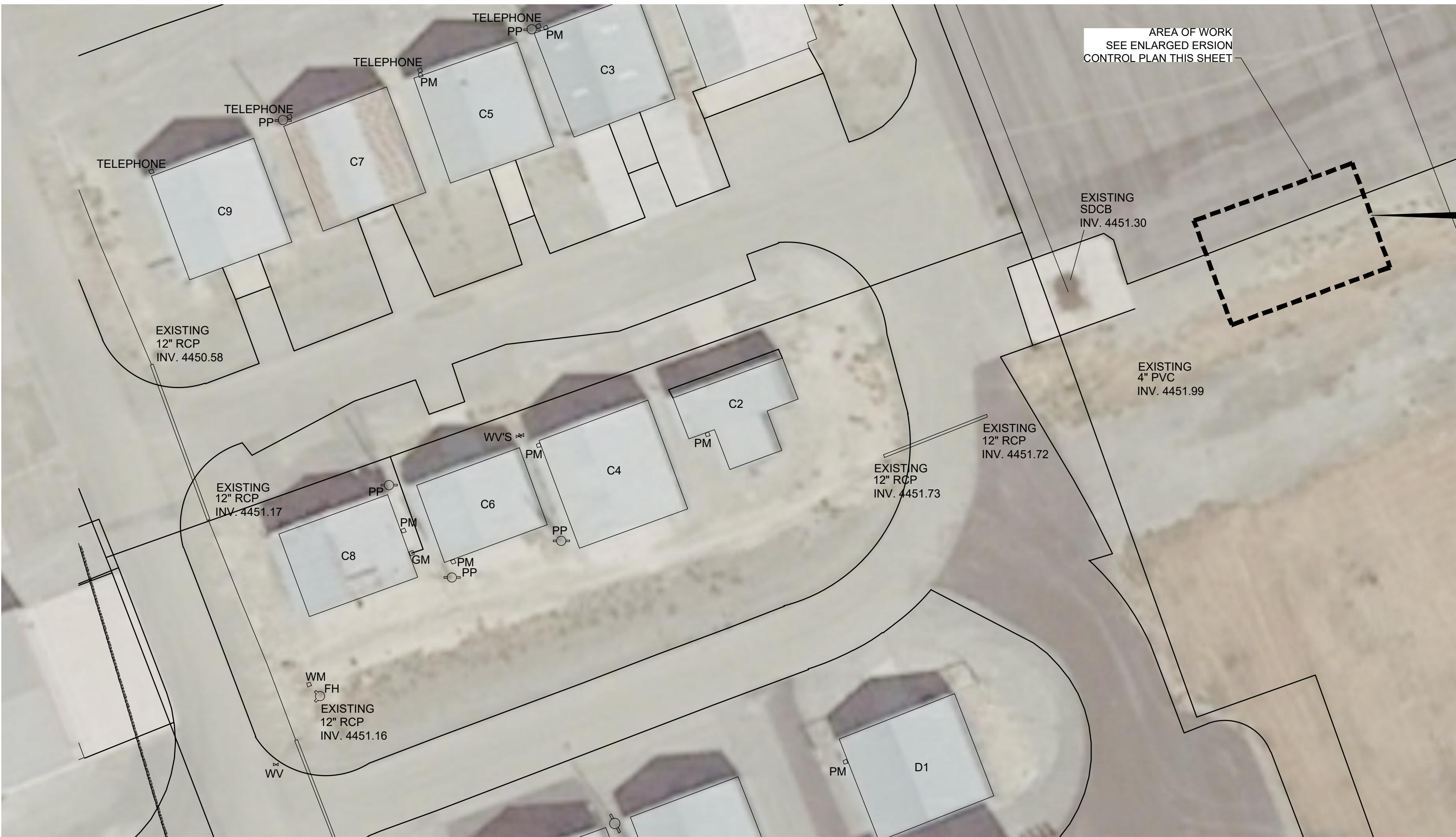
INSTALLATION OF A NEW
ABOVE GROUND FUEL TANK
LEADING EDGE AVIATION
LOGAN-CACHE AIRPORT
2500 NORTH AIRPORT DRIVE
LOGAN, UTAH 81321

SHEET DESCRIPTION:

ABBREVIATIONS, LEGEND & NOTES

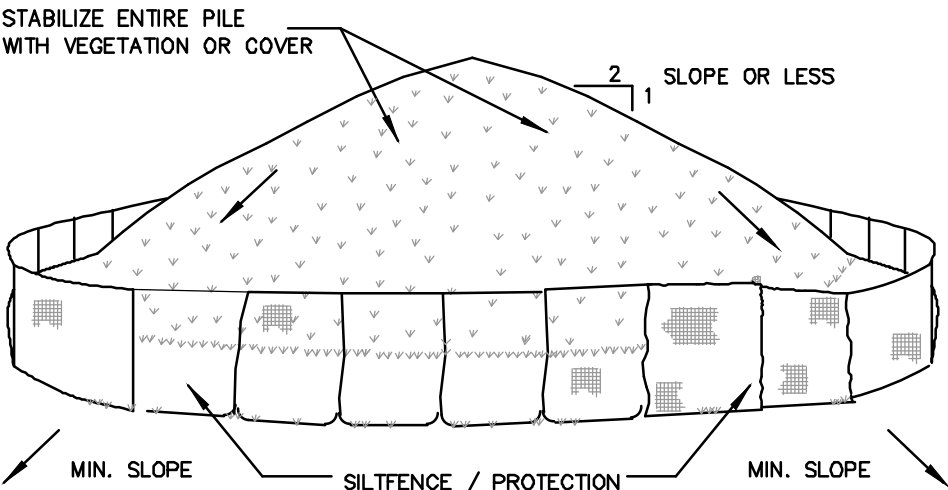
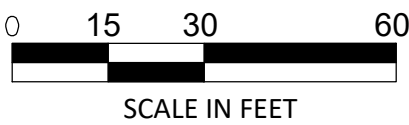
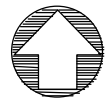
SEAL & SIGNATURE	DATE: DECEMBER 2019
	PROJECT NO.: AEAC-LOGAN
	DRAWING BY: MSK
	CHK. BY: AGN
	DWG No:
	T-120
BRIAN E. LEWIS, P.E. UTAH P.E. # 5013586-2203 EXP. DATE: 3/31/2021	CADD FILE NO. LOGAN-CACHE-Set.dwg





EXISTING CONDITIONS, EROSION & SEDIMENT CONTROL PLAN

SCALE: 1" = 30'



INSTALLATION NOTES

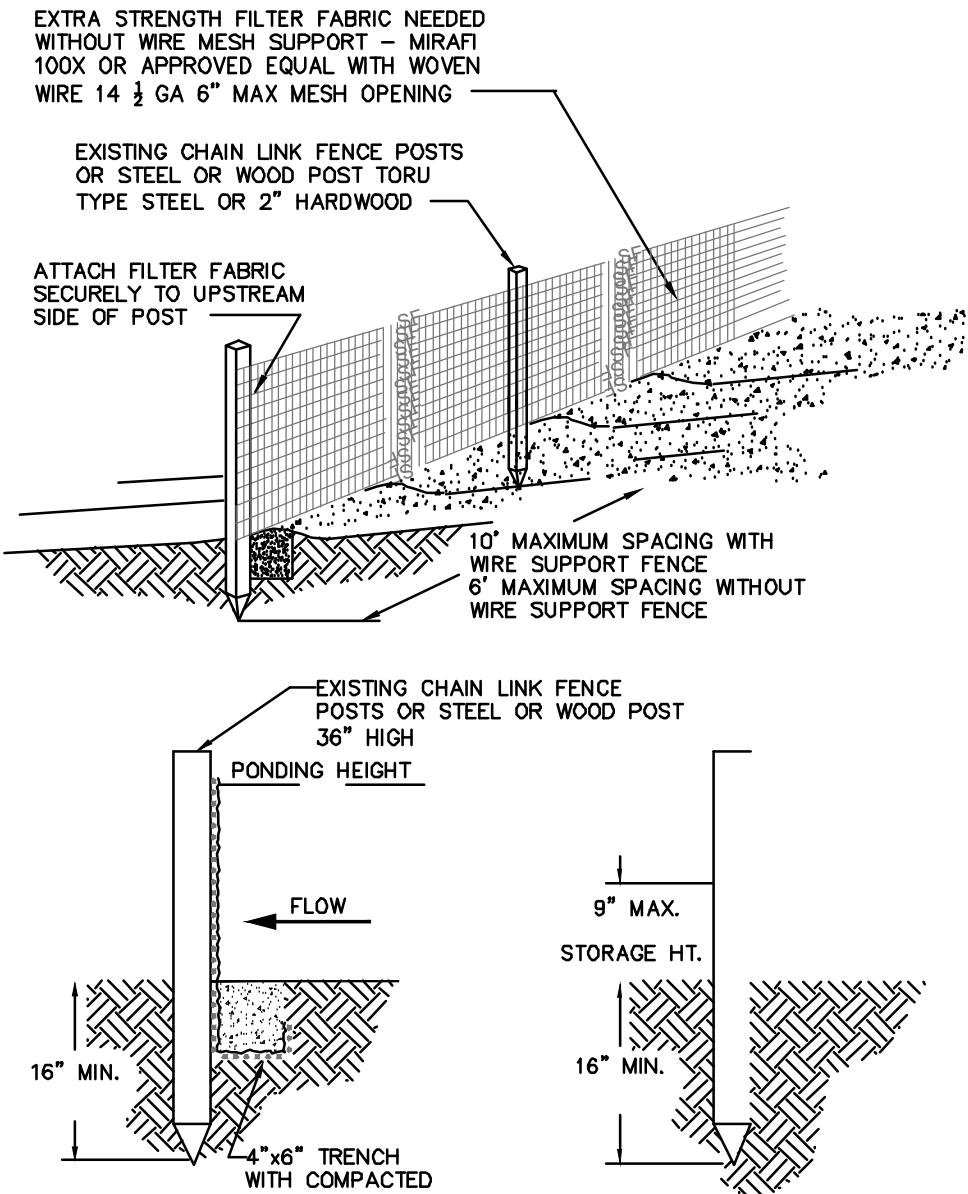
1. AREA CHOSEN FOR STOCKPILING OPERATIONS SHALL BE DRY AND STABLE.
2. MAXIMUM SLOPE OF STOCKPILE SHALL BE 1:2.
3. UPON COMPLETION OF SOIL STOCKPILING, EACH PILE SHALL BE SURROUNDED WITH EITHER SILT FENCING OR STRAWBALES, THEN STABILIZED WITH VEGETATION OR COVERED.
4. SEE DETAIL FOR INSTALLATION OF SILTFENCE.
5. STOCKPILING ON STANDFORD AVENUE SIDE OF SITE ONLY.

SOIL MANAGEMENT

1. STOCKPILES OF CONTAMINATED SOILS MUST BE COVERED WITH TEMPORARY PLASTIC FILM OR SHEETING TO PREVENT STORMWATER FROM COMING INTO CONTACT WITH THEM. SITE CONTROLS MUST BE EMPLOYED THAT PROTECT DRAG-OUT INTO A CITY STREET FROM THE DEVELOPMENT AND, IF A CLEAN-UP ACTION SITE (CONTAMINATED), FROM THE DAY-TO-DAY OPERATIONS.
2. STOCKPILE PERIMETERS MUST HAVE A CONTAINMENT BARRIER ON ALL FOUR SIDES OF EVERY STOCKPILE TO PREVENT STORMWATER RUN-ON AND MATERIAL RUNOFF. BARRIERS CAN CONSIST OF CONCRETE CURBING, SILT FENCING, OR OTHER BERMING MATERIAL, DEPENDING ON THE ACTIVITY, SIZE, AND RESOURCES AVAILABLE.
3. AREAS UNDER STOCKPILES OF CONTAMINATED SOILS ARE NOT REQUIRED TO BE PAVED. HOWEVER, AN IMPERVIOUS LAYER MUST BE PLACED BENEATH THE STOCKPILE TO PROTECT UNCONTAMINATED AREAS FROM POTENTIAL LEACHATE. EXAMPLES OF IMPERVIOUS LAYERS INCLUDE, BUT ARE NOT LIMITED TO, ASPHALT, CONCRETE, OR A GEOMEMBRANE.

SOIL STOCKPILING DETAIL

NOT TO SCALE



TRENCH DETAIL

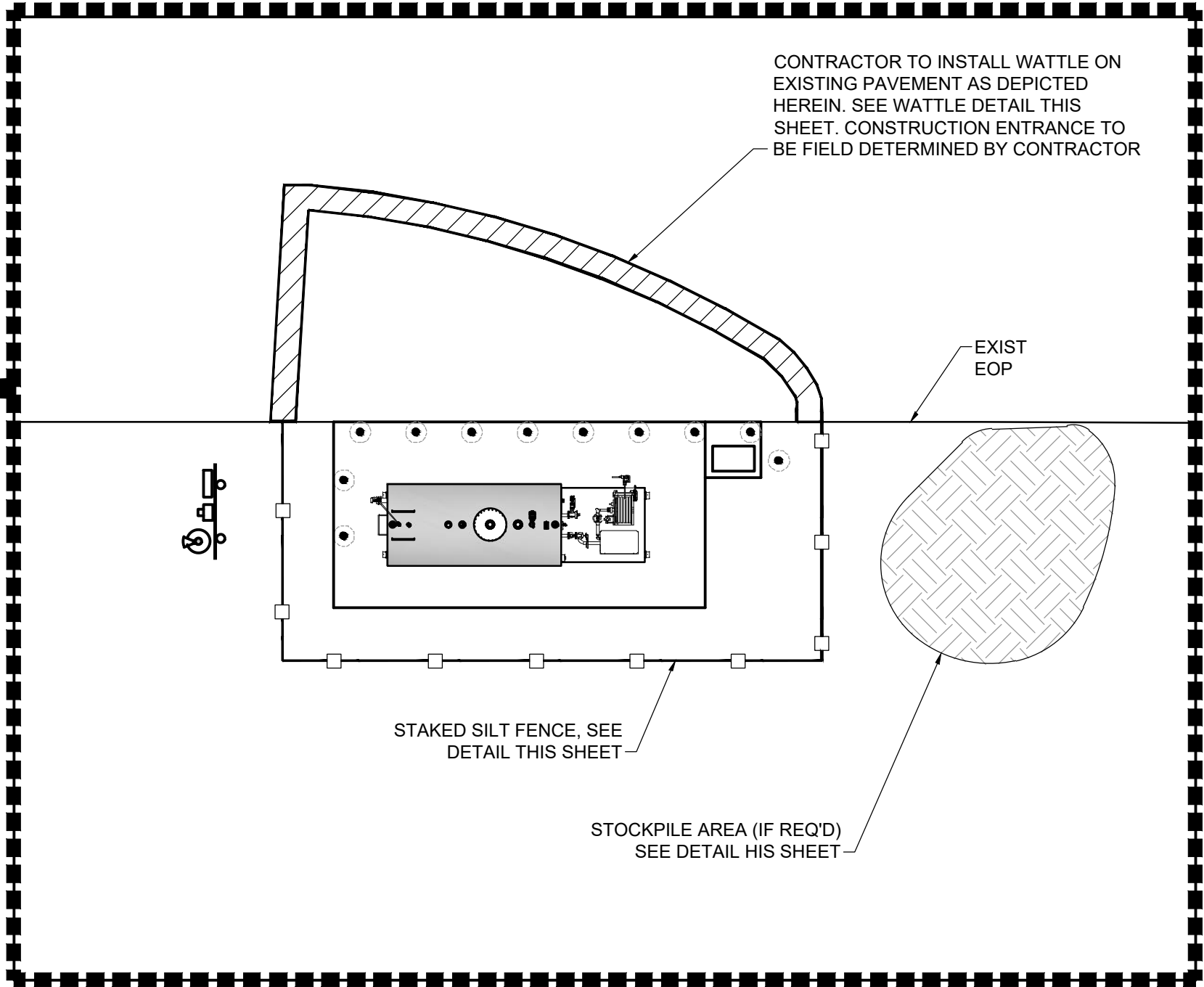
INSTALLATION WITHOUT TRENCHING

NOTES:

1. SILT FENCE SHALL BE PLACED ON SLOPE CONTOURS TO MAXIMIZE PONDING EFFICIENCY.
2. INSPECT AND REPAIR FENCE AFTER EACH STORM EVENT AND REMOVE SEDIMENT WHEN NECESSARY. 9\"/>
3. REMOVED SEDIMENT SHALL BE DEPOSITED TO AN AREA THAT WILL NOT CONTRIBUTE SEDIMENT OFF-SITE AND CAN BE PERMANENTLY STABILIZED.
4. WHERE POSSIBLE ATTACH SILT FENCE TO EXISTING CHAIN LINK FENCE.

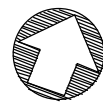
SILT FENCE DETAIL

NOT TO SCALE



ENLARGED VIEW SITE PLAN

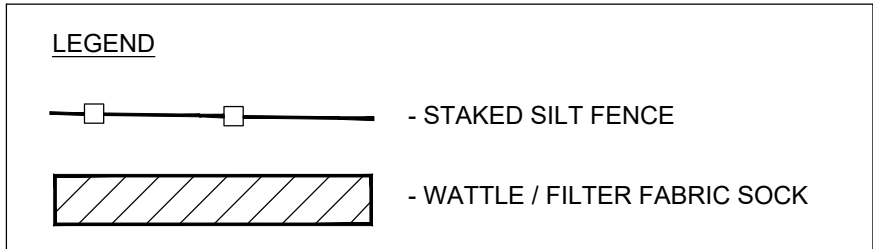
SCALE: 1" = 10'



Erosion Control Wattles, Coir Logs

WATTLE / FILTER FABRIC SOCK

NOT TO SCALE



ISSUES/REVISIONS		No.	Date
Description			

NOTICE
IT IS A VIOLATION OF LAW FOR ANY PERSON, UNLESS ACTING UNDER THE DIRECTION OF A PROFESSIONAL ENGINEER, OR LICENSED ARCHITECT, TO ALTER THIS DRAWING

N. D. Eryou, PhD, PE
Consulting Engineer

Central Florida Office

1460 Breezy Way
Spring Hill, FL 34608
Phone: (352) 684-7275
Fax (800) 660-6724
Email: alex@eryouengineering.com

Southwest Florida Office

5051 Castello Drive, Suite 244
Naples, Florida 34103
Phone: (352) 684-7275
Fax (800) 660-6724
Email: alex@eryouengineering.com



LEADING EDGE AVIATION
2500 NORTH AIRPORT DRIVE
LOGAN, UTAH 81321



3977 AVIATION LOOP, SANFORD, FLORIDA 32773
PHONE: (631) 586-2000

INSTALLATION OF A NEW
ABOVE GROUND FUEL TANK
LEADING EDGE AVIATION
LOGAN-CACHE AIRPORT
2500 NORTH AIRPORT DRIVE
LOGAN, UTAH 81321

SHEET DESCRIPTION:

EXISTING CONDITIONS ,
EROSION & SEDIMENT
CONTROL PLAN

SEAL & SIGNATURE

DATE: DECEMBER 2019
PROJECT NO.: AEAC-LOGAN
DRAWING BY: MSK
CHK. BY: AGN
DWG No:

C-100

BRIAN E. LEWIS, P.E.
UTAH P.E. # 5013586-2203
EXP. DATE: 3/31/2021

CADD FILE NO.
LOGAN-CACHE-Set.dwg

CADD FILE NO.
LOGAN-CACHE-Set.dwg

NOTE:

1. TANK AND EQUIPMENT SKID SHALL BE ANCHORED IN 4 PLACES AS DEFINED BY THE EQUIPMENT FABRICATOR USING 3/4" DIA, GRADE 36 GALVANIZED STEEL ANCHOR BOLTS W/MIN 6" EMBEDMENT INTO CONCRETE TANK SLAB.

2. AST ANCHORS SHALL BE CAST IN PLACE OR DRILLED & EPOXIED USING HILTI RE500 3V ADHESIVE ANCHOR SYSTEM.

TANK & PIPING REQUIREMENTS

A. DESIGN, CONSTRUCTION AND GENERAL INSTALLATION REQUIREMENTS FOR TANKS, THE DESIGN, FABRICATION AND CONSTRUCTION OF TANKS SHALL COMPLY WITH NFPA 30. EACH TANK SHALL BEAR A PERMANENT NAMEPLATE OR MARKING INDICATING THE STANDARD USED AS THE BASIS OF DESIGN.

B. PIPING SYSTEMS. PIPING SYSTEMS, AND THEIR COMPONENT PARTS, FOR FLAMMABLE AND COMBUSTIBLE LIQUIDS SHALL BE IN ACCORDANCE WITH SECTIONS 3403.6.1 THROUGH 3403.6.11.

C. TANK VENTS FOR NORMAL VENTING. TANK VENTS FOR NORMAL VENTING SHALL BE INSTALLED AND MAINTAINED IN ACCORDANCE WITH SECTIONS 3404.2.7.3.1 THROUGH 3404.2.7.3.6.

- VENT PIPE OUTLETS. VENT PIPE OUTLETS FOR TANKS STORING CLASS I, II OR IIIA LIQUIDS SHALL BE LOCATED SUCH THAT THE VAPORS ARE RELEASED AT A SAFE POINT OUTSIDE OF BUILDINGS AND NOT LESS THAN 12 FEET (3658 MM) ABOVE THE FINISHED GROUND LEVEL. VAPORS SHALL BE DISCHARGED UPWARD OR HORIZONTALLY AWAY FROM ADJACENT WALLS TO ASSIST IN VAPOR DISPERSION. VENT OUTLETS SHALL BE LOCATED SUCH THAT FLAMMABLE VAPORS WILL NOT BE TRAPPED BY EAVES OR OTHER OBSTRUCTIONS AND SHALL BE AT LEAST 5 FEET (1524 MM) FROM BUILDING OPENINGS OR LOT LINES OF PROPERTIES THAT CAN BE BUILT UPON. VENT OUTLETS ON ATMOSPHERIC TANKS STORING CLASS IIB LIQUIDS ARE ALLOWED TO DISCHARGE INSIDE A BUILDING IF THE VENT IS A NORMALLY CLOSED VENT.

EXCEPTION: VENT PIPE OUTLETS ON TANKS STORING CLASS IIB LIQUID INSIDE BUILDINGS AND CONNECTED TO FUEL-BURNING EQUIPMENT SHALL BE LOCATED SUCH THAT THE VAPORS ARE RELEASED TO A SAFE LOCATION OUTSIDE OF BUILDINGS.

- INSTALLATION OF VENT PIPING. VENT PIPING SHALL BE DESIGNED, SIZED, CONSTRUCTED AND INSTALLED IN ACCORDANCE WITH SECTION 3403.6. VENT PIPES SHALL BE INSTALLED SUCH THAT THEY WILL DRAIN TOWARD THE TANK WITHOUT SAGS OR TRAPS IN WHICH LIQUID CAN COLLECT. VENT PIPES SHALL BE INSTALLED IN SUCH A MANNER SO AS NOT TO BE SUBJECT TO PHYSICAL DAMAGE OR VIBRATION.

- MANIFOLDING. TANK VENT PIPING SHALL NOT BE MANIFOLDED UNLESS REQUIRED FOR SPECIAL PURPOSES SUCH AS VAPOR RECOVERY, VAPOR CONSERVATION OR AIR POLLUTION CONTROL.

- ABOVE-GROUND TANKS. FOR ABOVE-GROUND TANKS, MANIFOLDED VENT PIPES SHALL BE ADEQUATELY SIZED TO PREVENT SYSTEM PRESSURE LIMITS FROM BEING EXCEEDED WHEN MANIFOLDED TANKS ARE SUBJECT TO THE SAME FIRE EXPOSURE.

- UNDERGROUND TANKS. FOR UNDERGROUND TANKS, MANIFOLDED VENT PIPES SHALL BE SIZED TO PREVENT SYSTEM PRESSURE LIMITS FROM BEING EXCEEDED WHEN MANIFOLDED TANKS ARE FILLED SIMULTANEOUSLY.

- TANKS STORING CLASS I LIQUIDS. VENT PIPING FOR TANKS STORING CLASS I LIQUIDS SHALL NOT BE MANIFOLDED WITH VENT PIPING FOR TANKS STORING CLASS II AND III LIQUIDS UNLESS POSITIVE MEANS ARE PROVIDED TO PREVENT THE VAPORS FROM CLASS I LIQUIDS FROM ENTERING TANKS STORING CLASS II AND III LIQUIDS, TO PREVENT CONTAMINATION AND POSSIBLE CHANGE IN CLASSIFICATION OF LESS VOLATILE LIQUID.

- TANK VENTING FOR TANKS AND PRESSURE VESSELS STORING CLASS IB AND IC LIQUIDS. TANKS AND PRESSURE VESSELS STORING CLASS IB OR IC LIQUIDS SHALL BE EQUIPPED WITH VENTING DEVICES WHICH SHALL BE NORMALLY CLOSED EXCEPT WHEN VENTING UNDER PRESSURE OR VACUUM CONDITIONS, OR WITH LISTED FLAME ARRESTERS. THE VENTS SHALL BE INSTALLED AND MAINTAINED IN ACCORDANCE WITH SECTION 21.4.3 OF NFPA 30 OR API 2000.

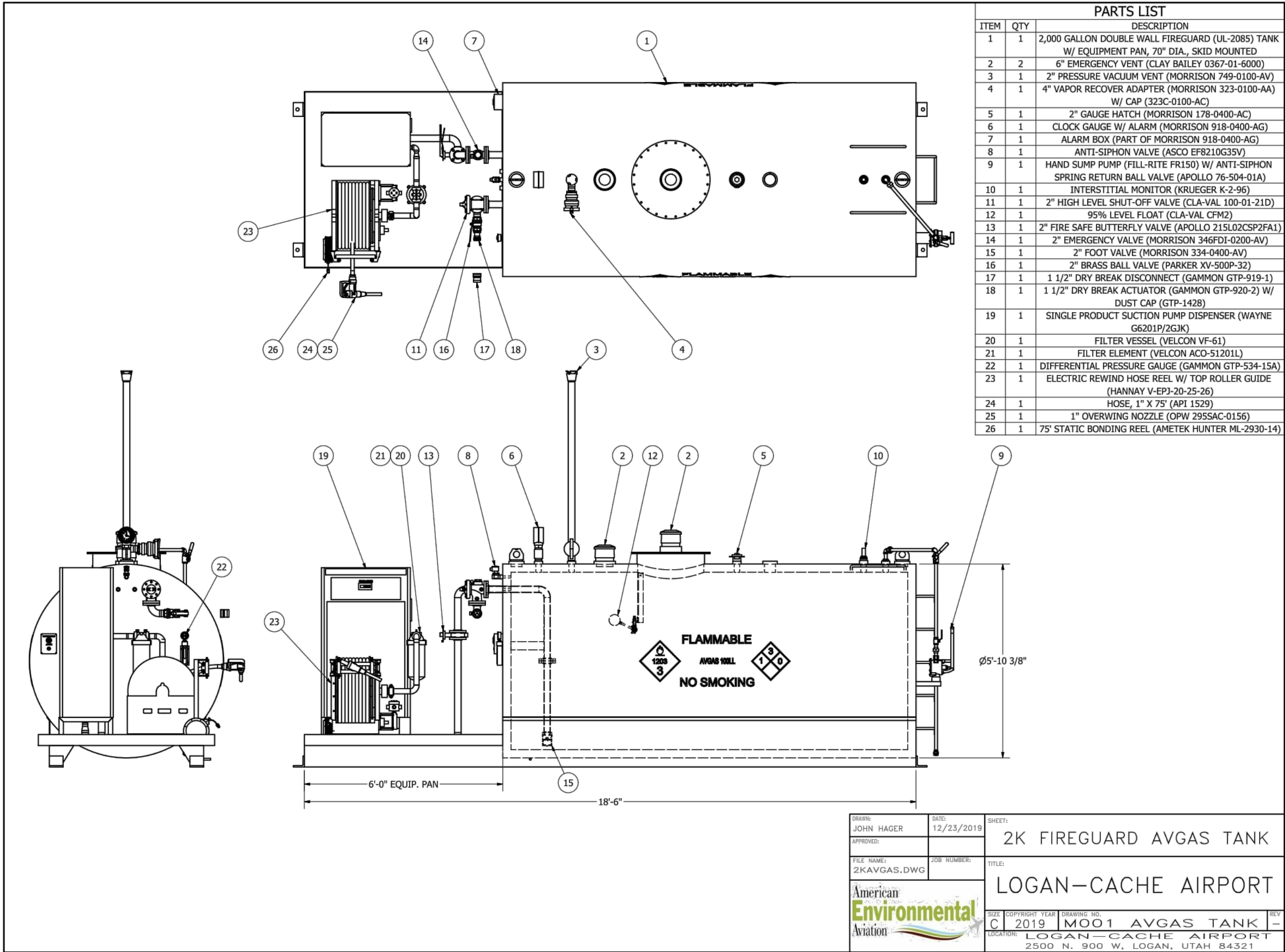
D. INTERNATIONAL FIRE CODE - EMERGENCY VENTING. STATIONARY, ABOVE-GROUND TANKS SHALL BE EQUIPPED WITH ADDITIONAL VENTING THAT WILL RELIEVE EXCESSIVE INTERNAL PRESSURE CAUSED BY EXPOSURE TO PRESS. EMERGENCY VENTS FOR CLASS I, II AND IIIA LIQUIDS SHALL NOT DISCHARGE INSIDE BUILDINGS. THE VENTING SHALL BE INSTALLED AND MAINTAINED IN ACCORDANCE WITH SECTION 22.7 OF NFPA 30.

EXCEPTION: TANKS LARGER THAN 12,000 GALLONS (45,420 L) IN CAPACITY STORING CLASS IIB LIQUIDS WHICH ARE NOT WITHIN THE Diked AREA OR THE DRAINAGE PATH OF CLASS I OR II LIQUIDS DO NOT REQUIRE EMERGENCY RELIEF VENTING.

E. FILLING, EMPTYING AND VAPOR RECOVERY CONNECTIONS. FILLING, EMPTYING AND VAPOR RECOVERY CONNECTIONS TO TANKS CONTAINING CLASS I, II OR IIIA LIQUIDS SHALL BE LOCATED OUTSIDE OF BUILDINGS IN ACCORDANCE AT A LOCATION FREE FROM SOURCES OF IGNITION AND NOT LESS THAN 5 FEET (1524 MM) AWAY FROM BUILDING OPENINGS OR LOT LINES OF PROPERTY THAT CAN BE BUILT ON. SUCH OPENINGS SHALL BE PROPERLY IDENTIFIED AND PROVIDED WITH A LIQUID-TIGHT CAP WHICH SHALL BE CLOSED WHEN NOT IN USE.

F. FIRE PROTECTION OF SUPPORTS. SUPPORTS OR PILINGS FOR ABOVE-GROUND TANKS STORING CLASS I, II OR IIIA LIQUIDS ELEVATED MORE THAN 12 INCHES (305 MM) ABOVE GRADE SHALL HAVE A FIRE-RESISTANCE RATING OF NOT LESS THAN 2 HOURS IN ACCORDANCE WITH THE FIRE EXPOSURE CRITERIA SPECIFIED IN ASTM E 1529.

ALL TANKS HAVE BEEN POSITIONED IN COMPLIANCE WITH INTERNATIONAL FIRE CODE.



2,000 GALLONUL-2085 FIREGUARD AST SHOP DRAWING
NTS

NOTICE
IT IS A VIOLATION OF LAW FOR ANY PERSON, UNLESS ACTING UNDER THE DIRECTION OF A PROFESSIONAL ENGINEER, OR LICENSED ARCHITECT, TO ALTER THIS DRAWING

N. D. Eryou, PhD, PE
Consulting Engineer

Central Florida Office

1460 Breezy Way
Spring Hill, FL 34608
Phone: (352) 684-7275
Fax (800) 660-6724
Email: alex@eryouengineering.com

Southwest Florida Office

5051 Castello Drive, Suite 244
Naples, Florida 34103
Phone: (352) 684-7275
Fax (800) 660-6724
Email: alex@eryouengineering.com



LEADING EDGE AVIATION
2500 NORTH AIRPORT DRIVE
LOGAN, UTAH 81321



3977 AVIATION LOOP, SANFORD, FLORIDA 32773
PHONE: (631) 586-2000

INSTALLATION OF A NEW
ABOVE GROND FUEL TANK
LEADING EDGE AVIATION
LOGAN-CACHE AIRPORT
2500 NORTH AIRPORT DRIVE
LOGAN, UTAH 81321

SHEET DESCRIPTION:

TANK
SHOP
DRAWINGS

SEAL & SIGNATURE

DATE: DECEMBER 2019
PROJECT NO.: AEAC-LOGAN
DRAWING BY: MSK
CHK. BY: AGN
DWG No:

M-100

BRIAN E. LEWIS, P.E.
UTAH P.E. # 5013586-2203
EXP. DATE: 3/31/2021

CADD FILE NO.
LOGAN-CACHE-Set.dwg

76-500 SERIES

Stainless Steel Ball Valve with Spring Return Handle

Female NPT Thread, 1/4" to 1" 2000 CWP (psig), 1.25" to 2" 1500 CWP (psig), Cold Non-Shock, 150 psig Saturated Steam, Vacuum Service to 29 inches Hg, MSS SP-110 compliant.

FEATURES

- Spring return to close ("01" suffix)
- Spring return to open ("0P" suffix)
- Carbon steel and graphite reinforced seats (MPH-H)
- All components of lever are stainless steel
- Operating torque is approximately three times standard valve torque

- Blow-out-proof stem design
- Adjustable packing gland
- Meets NACE MR0175 (2000) & MR0103 (2012)
- Investment cast components

OPTIONS AVAILABLE: (More information in Section B)

SWIFFIG	OPTION	SIZES
-01	Standard Configuration	All
-011	BSPP (Parallel Thread) Connection	1/4" to 2"
-012	BSPT (Tapered Thread) Connection	1/4" to 2"
-08	90° Reverse Stem	1/4" to 2"
-14	Side Levered Ball (90° Directional)	1/4" to 2"
-21	UNIONPS Sealless (Non PTFE)	1/4" to 2"
-24	Graphite Packing	1/4" to 2"
-35	PIPE END	1/4" to 2"
-44	Seal Welded	1/4" to 2"
-45	Assembled Dry	1/4" to 2"
-52	Two Jack Welds	1/4" to 2"
-53	Oxygen Cleaned	1/4" to 2"
-54	Grounded Ball & Stem	1/4" to 2"

STANDARD MATERIAL LIST

PART	MATERIAL
1	Handle SS w/Wheel
2	Stem packing Nut/MSH PTFE (MPH-H)
3	Stem bearing BPTFE
4	Ball A276-316
5	Seat (2) Natural PTFE (MPH-TE)
6	Resilient A276-316 (1/4" to 1") A351 C18M (1.25" to 2")
7	Disc nut A276-316
8	Stem A276-316
9	Lever nut 18-8 SS
10	Body seal PTFE (1.25" to 2")
11	Body A351 C18M

PRODUCT NUMBER	SIZE	A	B	C	D	WT.
76-501-01A	1/4"	0.37	1.03	2.66	7.00	1.26
76-502-01A	3/8"	0.37	1.03	2.66	7.00	1.26
76-503-01A	1/2"	0.50	1.12	2.25	7.00	1.31
76-504-01A	3/4"	0.68	1.30	3.00	7.00	1.36
76-505-01A	1"	0.87	1.68	3.37	7.00	2.35
76-506-01	1.25"	1.00	2.00	4.00	9.00	3.36
76-507-01	1.5"	1.25	2.18	4.37	9.00	4.78
76-508-01	2"	1.50	2.75	5.50	9.00	6.96

FOR PRESSURE/TEMPERATURE RATINGS, REFER TO PAGE 15, GRAFPA NO. 12 (1.25" TO 2")

REFER TO PAGE 15, GRAFPA NO. 12 (1.25" TO 2")

Copyright © 2013 Apollo Valves, Manufactured by Conbraco Industries - Printed in the USA

HAND SUMP PUMP ANTI-SYPHON SPRING RETURN BALL VALVE (APOLLO 76-504-01A)

NOT TO SCALE

129-01 (Full Internal Port) MODEL 629-01 (Reduced Internal Port) Float Valve



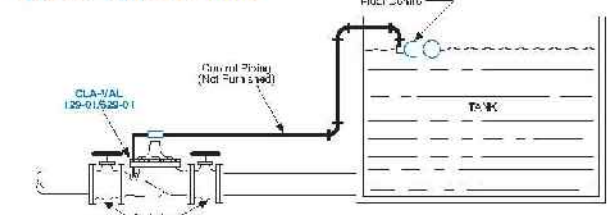
Schematic Diagram

Item	Description
1	Hydrol (Main Valve)
2	X47A Ejector
3	Ball Reducer
4	CFM2 Float Control

Optional Features

Item	Description
A	X47A Flow Cleaner Strainer
B	CK2 (Isolation Valve)
C	CV Flow Control (Closing)
D	Check Valves With Isolation Valve
E	Independent Operating Pressure
F	X141 Pressure Gauge
G	CV Speed Control (Opening)
V	X101 Valve Position Indicator
Y	X43 "Y" Strainer

Typical Applications



Piping and Tank Sizing

Install valve and control as shown in the diagram above. The float control should be located in a still liquid surface. If it is necessary to obtain this condition, a stilling well should be constructed. Mount the float control on the connecting piping with the outlet port at the desired high water level. When a separate source of supply pressure (Option F) is used by the pilot control system, that pressure must at all times be constant and equal to or greater than the pressure at the valve inlet.

Filter Liquid Level Control

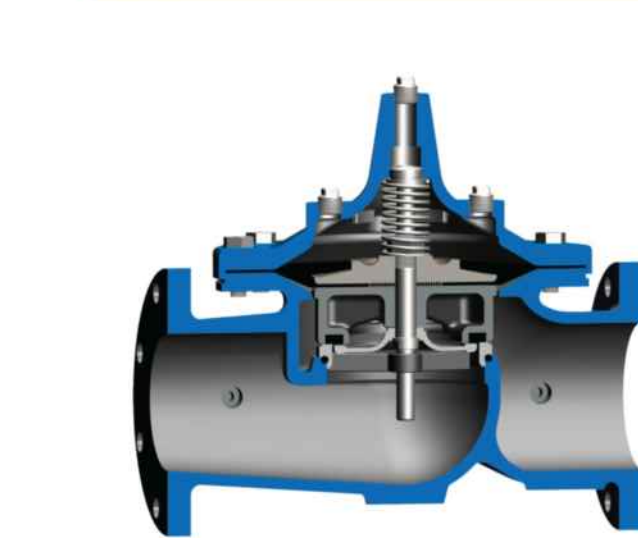
Maintains constant level in rapid sand filter. Usually requires the use of an independent operating pressure as shown.

DO NOT USE FOR ON-OFF SERVICE.

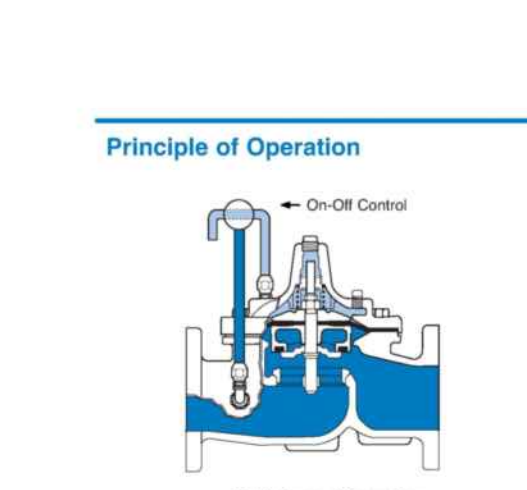
Note: We recommend protecting tubing and valve from freezing temperatures.

—MODEL— 100-01

Hytrol Valve



Principle of Operation



Full Open Operation
When pressure in the cover chamber is relieved to a zone of lower pressure, the line pressure at the valve inlet opens the valve, allowing full flow.

Tight Closing Operation
When pressure from the valve inlet is applied to the cover chamber, the valve closes drip-tight.

Modulating Action
The valve holds any intermediate position when operating pressures are equal above and below the diaphragm. A Cla-Val "Modulating" Pilot Control will allow the valve to automatically compensate for line pressure changes.

2" HIGH LEVEL SHUT OFF VALVE (CLA-VAL 100-01-21D)

NOT TO SCALE

2" BRASS BALL VALVE (PARKER XY-500P-32)

NOT TO SCALE

Model 129-01 (Uses Basic Valve Model 100-01)

Pressure Ratings (Recommended Maximum Pressure - psi)

Valve Body & Cover	Grade	Material	Pressure Class		
			Flanged	grooved	Threaded
			ANSI Class 150	300	Extri Details
ASTM A336	Ductile Iron	B16.42	250	400	400
ASTM A216-WCB	Cast Steel	B16.5	285	400	400
ASTM B82	Bronze	B16.24	225	400	400

Note: * ANSI standards are for flange dimensions only. Flanged valves are available faced and not drilled. 4 End Details mentioned to ANSI B2.1 specifications. Valves for higher pressure are available; consult factory for details.

Materials

Component	Standard Material Combinations
Body & Cover	Ductile Iron Cast Steel Bronze
Available Sizes	1" - 8" 1" - 16" 1" - 16"
Disc Retainer & Diaphragm Washer	Cast Iron Cast Steel Bronze
Disc	Bronze Is Standard Stainless Steel is Optional Buna-N Rubber
Diaphragm	Nylon Reinforced Buna-N Rubber
Stem, Nut & Spring	Stainless Steel

For material options not listed, consult factory.

Cla-Val manufactures valves in more than 50 different alloys.

Model 129-01 Dimensions (In Inches)

Valve Size (Inches)	1	1 1/4	1 1/2	2	2 1/2	3	4	6	8	10	12	14	16	18	20	24	30	36
A Threaded	7.25	7.25	7.25	9.38	11.00	12.50	15.00	20.00	25.38	28.75	34.00	39.00	41.50	46.00	50.00	61.50	83.00	76.00
AA 150 ANSI	—	—	8.50	9.38	11.00	12.50	15.00	20.00	25.38	28.75	34.00	39.00	41.50	46.00	50.00	61.50	83.00	76.00
AA 300 ANSI	—	—	9.00	10.00	11.25	12.50	15.00	20.00	25.38	28.75	34.00	39.00	41.50	46.00	50.00	61.50	83.00	76.00
B Dia.	5.62	5.62	5.62	6.62	8.00	9.12	11.50	15.75	20.00	23.62	28.00	32.75	35.50	40.00	45.00	54.50	75.00	66.00
C Max.	5.50	6.50	6.50	6.50	7.50	8.18	10.62	13.88	16.00	17.12	20.88	24.16	25.00	30.00	41.00	48.00	54.00	61.50
D Threaded	3.25	3.25	3.25	4.75	5.50	6.25	—	—	—	—	—	—	—	—	—	—	—	—
DD 150 ANSI	—	—	4.25	4.75	5.50	6.00	7.50	10.00	12.88	14.88	17.00	19.50	20.81	—	—	—	—	—
DD 300 ANSI	—	—	4.25	5.00	5.88	6.88	7.88	10.50	13.25	15.58	17.75	20.25	21.62	—	—	—	—	—
E	1.12	1.12	1.12	1.50	1.68	2.00	3.19	4.31	5.31	6.25	10.75	12.62	15.50	15.50	16.00	17.75	21.31	24.50
F 150 ANSI	—	—	2.50	3.00	3.50	3.75	4.50	5.50	6.75	8.00	8.50	10.50	11.75	15.00	16.50	18.25	22.50	25.80
FF 300 ANSI	—	—	3.08	3.25	3.75	4.12	5.00	6.25	7.50	8.75	10.25	11.50	12.75	15.00	16.50	18.25	24.00	25.80
G Threaded	1.88	1.88	1.88	3.25	4.00	4.50	—	—	—	—	—	—	—	—	—	—	—	—
GG 150 ANSI	—	—	4.00	4.25	4.00	4.00	5.00	6.00	8.00	8.82	13.75	14.88	15.69	—	—	—	—	—
GGG 300 ANSI	—	—	4.25	4.50	4.31	4.39	5.31	6.50	8.50	9.31	14.50	15.62	16.50	—	—	—	—	—
H NPT Body Tapping	3/75	3/75	3/75	5/8	5/8	5/8	7/8	1	1	1	1	1	1	1	1	1	1	1
J NPT Cover Tapping	25	25	25	30	30	30	30	30	30	30	30	30	30	30	30	30	30	30
K NPT Cover Tapping	3/75	3/75	3/75	5/8	5/8	5/8	7/8	1	1	1	1	1	1	1	1	1	1	1
Lmm Travel	0.4	0.4	0.4	0.4	0.4	0.4	0.4	0.4	0.4	0.4	0.4	0.4	0.4	0.4	0.4	0.4	0.4	0.4
Mmm Ship Wt Lbs.	15	15	15	30	50	70	140	280	700	780	1180	1900	2880	3500	3600	6200	7700	11700
X Pilot System	11	11	11	13	14	15	17	29	31	33	39	40	40	43	48	68	79	85
Y Pilot System	9	9	9	9	10	11	12	20	22	24	26	30	32	34	38	40	45	47
Z Pilot System	9	9	9	9	10	11	12	20	22	24	26	30	32	34	38	40	45	47

Note: The top two flange holes on valve size 36 are threaded to 1 1/2" 6 UNC.

95% LEVEL FLOAT - (CLA-VAL CFM2)

NOT TO SCALE

Model 346 Series External Emergency Valves

Application

The Morrison Fig. 346 Series External Emergency Valve is designed for installation at the outlet of an AST or in a liquid transfer line where product flow must be stopped in the event of a fire. The flanges on the 346FDI models conform to ANSI B16.42 specifications for class 150 raised face ductile iron flanges.

Operational Criteria

- 346DI/SS models: cold, non-shock maximum operating pressure 200 psi W.O.G.
- 346FDI models: cold, non-shock maximum operating pressure 250 psi W.O.G.

Materials of Construction

- O-ring... Teflon® encapsulated fluorecarbon elastomer
- Spring... 302 stainless steel
- Steel nut/plug ... 303 stainless steel
- Handle... Brass
- Fulcrum shaft... 303 stainless steel
- Groove pin... Steel
- Hold open hook... Stainless steel

Certifications and Listings

- Fuse link is UL listed

Item Number	A	B	S	D	E	F	G	H	I	J	K	L
346FDI0200-AV	2"	F	DI	TFE	DI	DI	160"	4	6 1/2"	6 1/2"	16.9	
346FDI0300-AV	3"	F	DI	TFE	DI	DI	180"	4	8 1/2"	8 1/2"	26.40	
346FDI0400-AV	4"	F	DI	TFE	DI	DI	180"	6	11 1/2"	11 1/2"	72.2	
SPECIFICATION OPTIONS:												
346DI-1000-AV	1/4"	DI	TFE	DI	DI	160"	5"	8 1/2"	1	7.30	A—Size (inches)	
346DI-1100-AV	1"	DI	TFE	DI	DI	160"	5"	8 1/2"	1	7.30	B—Mounting connection: Flanged (F) or Female 1/2" (Bore)	
346DI-1200-AV	1 1/2"	DI	TFE	DI	DI	160"	5"	8 1/2"	1	7.30	C—Material: Stainless Steel (SS) or 316 stainless steel (SS)	
346DI-1400-AV	1 1/2"	DI	TFE	DI	DI	160"	5"	8 1/2"	1	7.30	D—Flange material: 1/2" (F) or 1/4" (Bore)	
346DI-1600-AV	2"	DI	TFE	DI	DI	160"	5"	8 1/2"	1	7.30	E—Process: Double End (DI) or 3/4" stainless steel (SS)	
346DI-1800-AV	3"	DI	TFE	DI	DI	160"	5"	8 1/2"	1	7.30	F—Lower arm: Double End (DI) or 3/4" stainless steel (SS)	
346SS-1000-AV	1/4"	SS	TFE	SS	SS	160"	5"	8 1/2"	SS	8.69	G—Number of bolts: 4	
346SS-1100-AV	1"	SS	TFE	SS	SS	160"	5"	8 1/2"	SS	8.69	H—Length of tube (inches): 15	
346SS-1200-AV	1 1/2"	SS	TFE	SS	SS	160"	5"	8 1/2"	SS	8.69	I—Weight of tube (lbs): 1.1	
346SS-1400-AV	1 1/2"	SS	TFE	SS	SS	160"	5"	8 1/2"	SS	8.69	J—Number of bolts: 4	
346SS-1600-AV	2"	SS	TFE	SS	SS	160"	5"	8 1/2"	SS	8.69	K—Reducing bushings: 1/4" or 3/16 stainless steel (SS)	
346SS-1800-AV	3"	SS	TFE	SS	SS	160"	5"	8 1/2"	SS	8.69	L—Shipping weight (lbs): 1.1	
Comparison flanges, flange gaskets, nuts, bolts and washers available.												

540 E. 4th Street, P.O. Box 138 | Duquoin, IA 52004-0138
t: 563-583-5201 | f: 563-583-1840 | e: 563-583-5038
www.morrisonbros.com

2" EXTERNAL E-VALVE (MORRISON 346FDI-0200-AV)

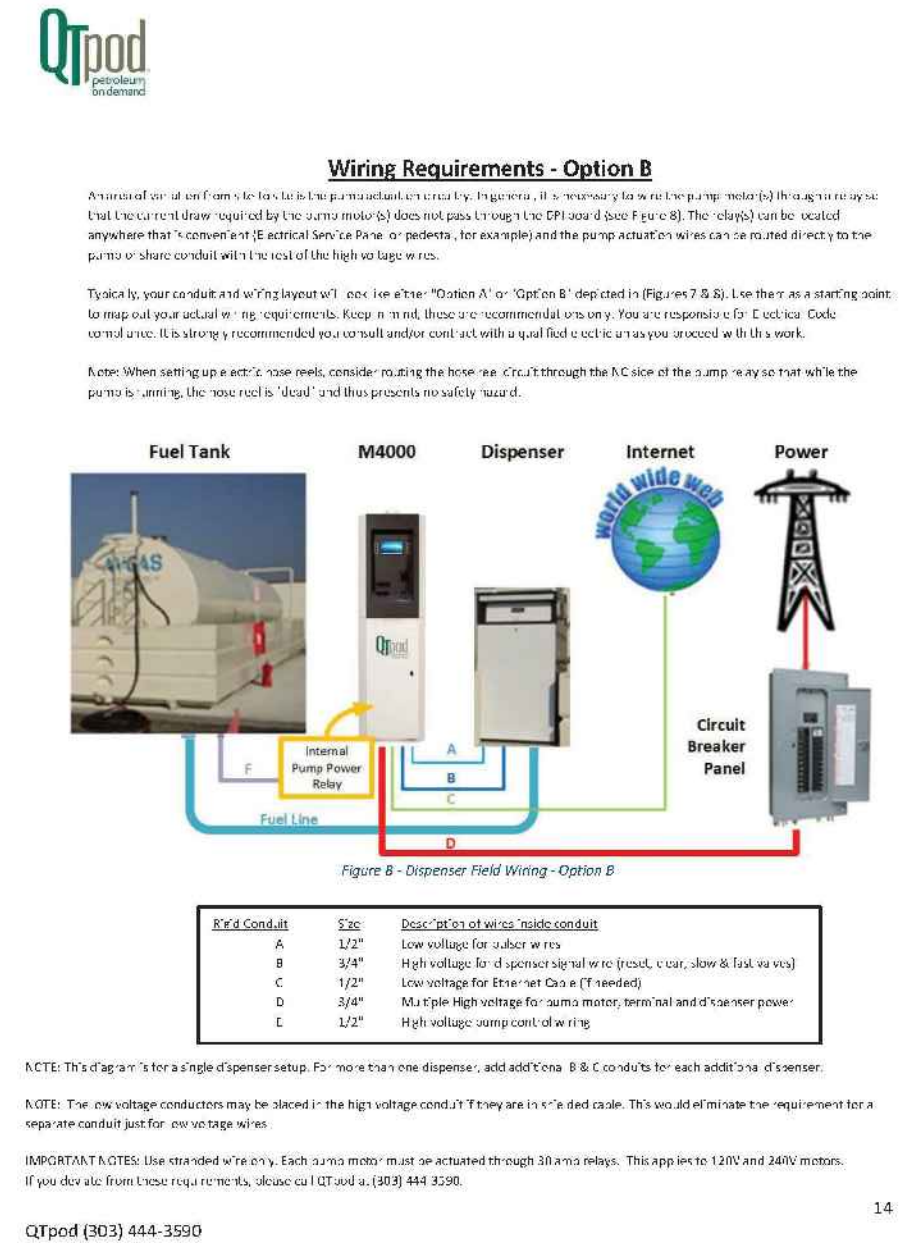
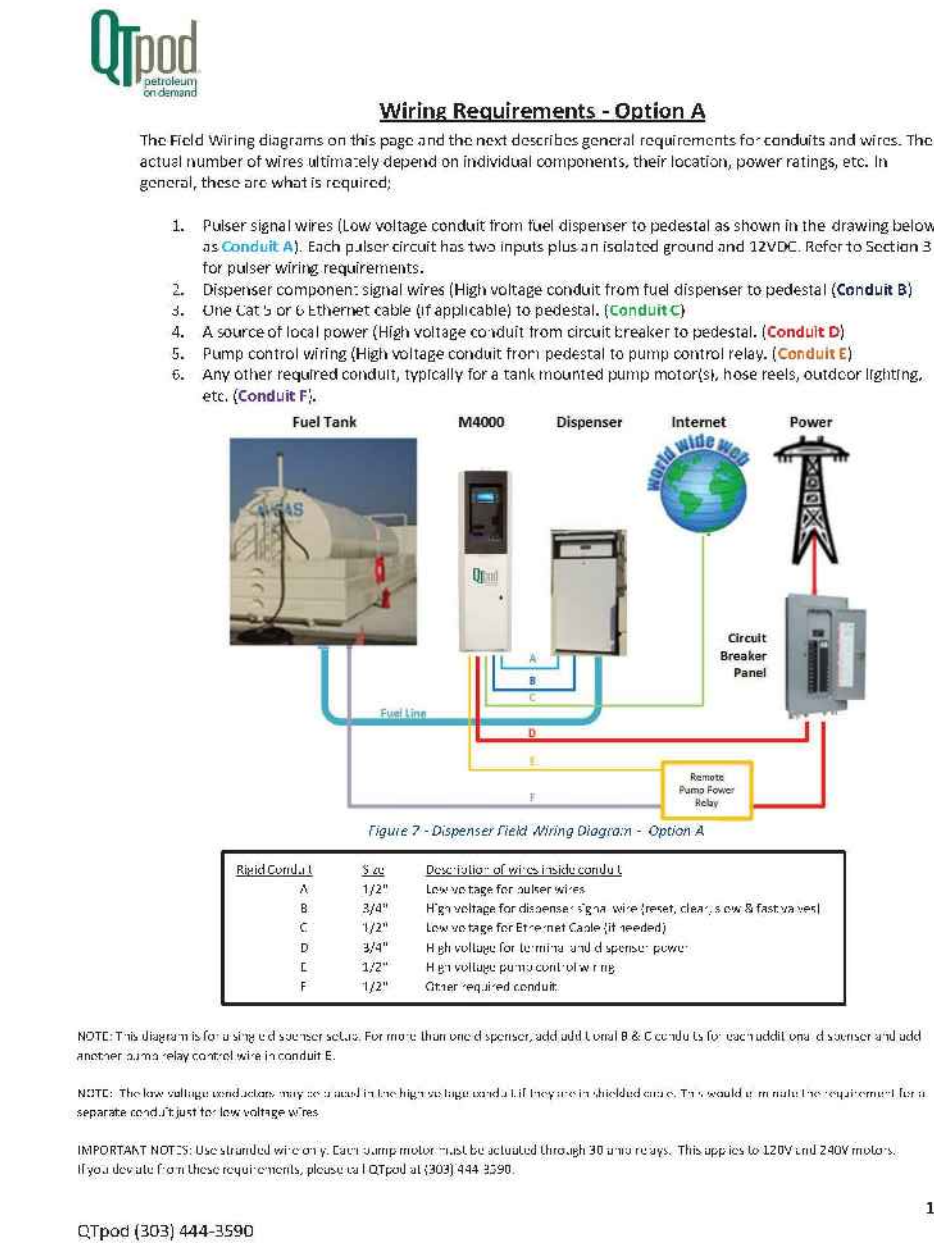
NOT TO SCALE

129-01 Valve Selection	100-01 Pattern: Globe (G), Angle (A), and Connections: Threaded (T), Grooved (G), Flanged (F) Indicate Available Sizes																		
	Inches	1	1 1/4	1 1/2	2	2 1/2	3	4	6	8	10	12	14	16	18	20	24	30	36
Basic Valve 100-01	Pattern	G, A	G, A	G, A	G, A	G, A	G, A	G, A	G, A	G, A	G, A	G, A	G, A	G, A	G, A	G, A	G, A	G, A	G, A
End Detail	T	T	T	T	T	T	T	T	T	T	T	T	T	T	T	T	T	T	T
Suggested Flow (gpm)	Maximum	55	55	125	210	300	460	800	1600	3100	4000	7000	8400	11000	14000	17000	25000	42000	50000
Suggested Flow (liters/sec)	Maximum	2.3	2.3	5.1	8.1	10	19	30	60	110	165	305	442	533	684	868	1070	1677	2010

100-01 Series is the full internal port Hydrol.

629-01 Valve Selection		Suggested Flows: Globe (G), Angle (A), and Connections: Flanged (F) Indicate Available Sizes																		
		Inches	3	4	6	8	10	12	14	16	18	20	24	30	36	42	48			
Basic Valve 100-20	mm	80	100	150	200	250	300	350	400	450	500	600	750	900	1000	1200				
	Pattern	G	G, A	G, A	G, A	G	G	G	G	G	G	G	G	G	G	G				
	End Call	F	F	F	F	F	F	F	F	F	F	F	F	F	F	F				
Suggested Flow (gpm)	Maximum	260	580	1000	2300	4100	6400	8200	8200	16000	16000	16000	28000	30500	30500	30500				
	Minimum	16	37	85	145	236	403	581	581	881	1040	1040	1784	2115	2115	2115				

100-20 Sizing In the reduced internal orifice area version of the 100-20 Series



NOTICE
IT IS A VIOLATION OF LAW FOR ANY
PERSON, UNLESS ACTING UNDER THE
DIRECTION OF A PROFESSIONAL
ENGINEER, OR LICENSED ARCHITECT, TO
ALTER THIS DRAWING

<p>N. D. Eryou, PhD, PE Consulting Engineer</p>	<p>Southwest Florida Office</p>	<p>5051 Castello Drive, Suite 244 Naples, Florida 34103 Phone: (352) 684-7275 Fax (800) 660-6724 Email: alex@eryouengineering.com</p>
	<p>Central Florida Office</p>	<p>1460 Breezy Way Spring Hill, FL 34608 Phone: (352) 684-7275 Fax (800) 660-6724 Email: alex@eryouengineering.com</p>



SEAL & SIGNATURE	DATE: DECEMBER 2019 PROJECT NO.: AEAC-LOGAN DRAWING BY: MSK CHK. BY: AGN DWG No: <div style="text-align: center; font-size: 2em; font-weight: bold;">M-230</div>
BRIAN E. LEWIS, P.E. UTAH P.E. # 5013586-2203 EXP. DATE: 3/31/2021	CADD FILE NO. LOGAN-CACHE-Set.dwg

CONTRACTOR SHALL PROTECT AND SUPPORT ALL EXISTING STRUCTURES AND EQUIPMENT ADJACENT TO THE WORK AND PROJECT, SUPPORT AND RELOCATE, IF NECESSARY, ALL EXPOSED LINES AND MAKE COMPLETE RESTORATION OF DAMAGED PIPING, CONDUITS, WIRING, CABLES AND APPURTENANCES AT NO COST TO THE OWNER OF SAID UTILITIES, AUTHORITY OR ENGINEERS.

(C) ALL APPLICABLE NATIONAL FIRE PROTECTION ASSOCIATION (NFPA) CODES

- (D) ALL APPLICABLE BUILDING OFFICIAL & CODE ADMINISTRATORS.
- (BOCA) CODES
- (E) ALL LOCAL, STATE, AND FEDERAL SAFETY REGULATIONS.
- (F) ALL LOCAL, STATE, AND FEDERAL ENVIRONMENTAL PROTECTION. REGULATIONS.
- (G) DESIGN SAFETY STANDARDS FOR ELECTRICAL SYSTEMS (OSHA)
- (H) ANY OTHER PUBLIC AGENCIES HAVING JURISDICTION.

THE DRAWINGS DO NOT INDICATE ALL OF THE EXISTING EQUIPMENT, DEVICES, WIRING, STRUCTURES, PIPING, ETC., EITHER EXPOSED OR CONCEALED. PRIOR TO COMMENCING CONSTRUCTION, THE CONTRACTOR SHALL OBTAIN OR VERIFY THE EXACT LOCATION OF ALL THE EXISTING ITEMS THAT AFFECT THE WORK.

ALL WORK SHALL BE GROUNDED AS INDICATED ON THE DRAWINGS AND/OR AS REQUIRED IN ACCORDANCE WITH NATIONAL ELECTRICAL CODES.

THE CONTRACTOR SHALL PROVIDE EXPLOSION PROOF ELECTRICAL WIRING, EQUIPMENT AND DEVICES SUITABLE FOR INSTALLATION IN CLASS 1, DIVISION 1, GROUP C AND D LOCATIONS FOR AS REQUIRED BY NEC SECTIONS 501 AND 514 FOR THIS TYPE OF INSTALLATION.

THE CONTRACTOR SHALL PROVIDE SEAL-OFF FITTINGS AS SHOWN ON THE DRAWINGS, AND WHERE CONDUITS EGRESS OR INGRESS CLASS 1, DIVISION 1 AREAS, AND/OR AS REQUIRED BY NEC SECTIONS 501 AND 514.

	KEY RESET CONTROL		EMERGENCY PUSHBUTTON STATION
	TRANSFORMER		REMOTE ALARM
	FUSE		JUNCTION BOX
	CONTACT NO		MOTOR/HP
	CONTACT NC		SWITCH
	CIRCUIT BREAKER		FIRE ALARM SMOKE DETECTOR
	PUSH BUTTON		FIRE ALARM HORN/STROBE, 75 CANDELA, MTD. AT 80' AFF
	DEADMAN SWITCH		
	POWER PULL BOX		
	COMMUNICATIONS PULL BOX		
	FIRE ALARM PULL BOX		
	FIRE SUPPRESSION SYSTEM PULL BOX		
	ELECTRICAL PANEL		
	DISCONNECT SWITCH		
	20A, 120V, GROUNDING TYPE DUPLEX RECEPTACLE WITH GROUND FAULT PROTECTION		
	20A, 208V, GROUNDING TYPE DUPLEX RECEPTACLE		
	WALL MOUNTED LIGHTING FIXTURE		
	1X4' CEILING MOUNTED LIGHTING FIXTURE		
	EMERGENCY BATTERY PACK LIGHTING FIXTURE		
	CEILING MOUNTED JUNCTION BOX		
	LIGHTING SWITCH		
	CONDUIT RUNNING EXPOSED IN CEILING OR WALLS		

1. POWER AND CONTROL WIRES SHALL BE RUN IN SEPARATE CONDUITS.
2. ALL WIRING TO BE XHHW-2 INSULATED AND GROUNDING AS PER NEC AND NFPA 514.
3. ALL CONDUITS EXITING THE HAZARDOUS AREAS ARE TO BE SEALED WITH EPOXY FILLED SEALING FITTINGS PRIOR TO ENTRY INTO A NON-HAZARDOUS ZONE.
4. SEAL FITTINGS ARE REQUIRED AT EACH SENSOR BUT ARE NOT SHOWN FOR SIMPLICITY.
5. ALL CONDUITS TO MEET LATEST REQUIREMENTS OF NATIONAL ELECTRIC CODE.
6. (NFPA 70) AND THE AUTOMOTIVE AND MARINE SERVICE STATION CODE (NFPA 30A).
7. FOR EXACT AMOUNT AND SIZE OF LOW VOLTAGE CONTROL WIRES REFER TO MANUFACTURER'S RECOMMENDATIONS.
8. UNDERGROUND CONDUITS RUNNING FROM ELECTRICAL PANEL OR CONTROL EQUIPMENT TO DISPENSERS TO BE THREADED RIGID METAL.
9. ALL UNDERGROUND CONDUITS SHALL BE ENCASED IN CONCRETE.
10. EMERGENCY DISCONNECT SWITCHES.
AN APPROVED, CLEARLY IDENTIFIED AND READILY ACCESSIBLE EMERGENCY DISCONNECT SWITCH SHALL BE PROVIDED AT AN APPROVED LOCATION, TO IMMEDIATELY SHUT DOWN THE TRANSFER OF FUEL TO THE FUEL DISPENSERS IN THE EVENT OF A FUEL SPILL OR OTHER EMERGENCY. AN EMERGENCY DISCONNECT SWITCH FOR EXTERIOR FUEL DISPENSERS SHALL BE LOCATED WITHIN 100 FEET (30480 MM) OF, BUT NOT LESS THAN 20 FEET (6096 MM) FROM, THE FUEL DISPENSERS. FOR INTERIOR FUEL-DISPENSING OPERATIONS, THE EMERGENCY DISCONNECT SWITCH SHALL BE INSTALLED AT AN APPROVED LOCATION. AN APPROVED SIGN SHALL BE POSTED ON OR IMMEDIATELY ADJACENT TO SUCH DEVICES AND SHALL READ: EMERGENCY FUEL SHUTOFF. SUCH EMERGENCY DISCONNECT SWITCHES SHALL BE OF A TYPE THAT IS RESET MANUALLY
11. AT ALL TIMES THE CONTRACTOR WILL BE SOLELY AND COMPLETELY RESPONSIBLE FOR CONDITION OF JOB SITE, INCLUDING THE SAFETY OF ALL PERSONS AND PROPERTY AND FOR ALL NECESSARY INDEPENDENT ENGINEERING REVIEWS OF THESE CONDITIONS. THE ENGINEERS JOB SITE REVIEW IS NOT INTENDED TO INCLUDE REVIEW OF THE ADEQUACY OF THE CONTRACTORS SAFETY MEASURES.
12. THE CONTRACTOR SHALL MAKE AN EXAMINATION OF THE SITE. HE SHALL COMPARE THE SITE WITH THE DRAWINGS AND SPECIFICATIONS AND SATISFY HIMSELF AS TO CONDITIONS UNDER WHICH WORK IS TO BE PERFORMED. HE SHALL ASCERTAIN AND CHECK THE LOCATIONS OF ANY EXISTING STRUCTURES OR EQUIPMENT WHICH MAY AFFECT THIS WORK. NO ALLOWANCE SHALL SUBSEQUENTLY BE MADE IN HIS BEHALF FOR ANY EXPENSE TO WHICH HE MAY BE PUT DUE TO FAILURE OR NEGLECT ON HIS PART TO MAKE SUCH EXAMINATION.
13. ALL WORK SHALL BE COORDINATED WITH THE OWNER TO MAINTAIN CONTINUITY OF SERVICE AND MAXIMUM UTILIZATION OF THE OWNERS FACILITY. ALL WORK SHALL BE BID ON A 'NORMAL TIME' BASIS WITH PREMIUM TIME IN ADDITION ONLY AS AUTHORIZED FOR CORE BORING OR OTHER WORK WHICH WILL BE NOISY, DIRTY OR OTHERWISE OBSTRUCT THE WORK PROCESS.
14. THE CURRENT ISSUE OF ALL NFPA, CEC, CBC, UBC, UFC, ANSI, OSHA, ASTM, NEMA, AND OTHER NATIONALLY PUBLISHED CODES OR STANDARDS, AS WELL AS STATE AND LOCAL CODES AND ORDINANCES, SHALL APPLY TO THIS WORK WHETHER ADOPTED BY LOCAL AGENCIES OR NOT. THE MOST STRINGENT CODE SHALL APPLY.
15. NOTHING ON THE DRAWINGS OR SPECIFICATIONS INTENDED TO ALLOW A VIOLATION OF ELECTRICAL WORKING SPACE AROUND ELECTRICAL EQUIPMENT. A 30"W MIN x 48"D x 6'-6"H SPACE SHALL BE CLEAR TO THE FLOOR IN FRONT OF ALL ELECTRICAL PANELS, CONTROLS OR ITEMS THAT REQUIRE MAINTENANCE OR ACCESS WHILE ENERGIZED. ANY DEVIATION FROM THIS MINIMUM SHALL BE APPROVED IN WRITING.
16. ALL CONDUITS SHALL RUN TIGHT TO SLAB AND BEAMS. WHERE EQUIPMENT IS INSTALLED TIGHT TO SLAB, RUN CONDUIT BELOW OR ABOVE AS TIGHT TO EQUIPMENT AS POSSIBLE.
17. DO NOT SUPPORT CONDUITS FROM DUCTS, MECHANICAL SUPPORTS OR EQUIPMENT OF ANY KIND.
18. ALL CABLES, CONDUITS, PIPING OR EQUIPMENT LOCATIONS AND ELEVATIONS ARE APPROXIMATE. THE CONTRACTOR IS RESPONSIBLE FOR FIELD CHECKING AND MAKING ALL NECESSARY OFFSETS, AS REQUIRED, TO AVOID EXISTING INTERFERENCES AND COORDINATE WITH OTHER TRADES.
19. IDENTIFY EACH CONDUCTOR BY SHRINK-ON INDIVIDUALLY MARKED BRADY-TAGS AND EACH ELECTRICAL ITEM BY BLACK-WHITE-BLACK ENGRAVED SCREW-ON PLASTIC NAMEPLATE, LEGEND PER DRAWING.
20. ALL GROUND WIRES SHALL BE SEGREGATED FROM PHASE CONDUCTORS IN CONDUITS TO MINIMIZE GROUND LOOPS.
21. ELECTRICAL DESIGN BASED UPON TYPICAL VENDOR EQUIPMENT. COORDINATE FINAL INSTALLATION WITH ACTUAL EQUIPMENT FURNISHED.
22. THE CONTRACTOR SHALL PROVIDE ALL FUSES REQUIRED FOR PROJECT POWER INCLUDING ANY FUSES BLOWN DURING INITIAL TESTING.
23. BONDING JUMPERS SHALL BE INSTALLED TO INSURE CONTINUITY WHERE CONDUIT CONNECTIONS AT CONCENTRIC KNOCKOUTS ARE TO SERVE AS A GROUND.
24. ELECTRICAL CONTRACTOR SHALL BE RESPONSIBLE FOR DAMAGES TO ALL WALLS, FLOORS AND PAVING, IF DAMAGE OCCURS DURING CONSTRUCTION. THEY SHALL COORDINATE WITH OWNER TO PATCH, PAINT AND REPAIR TO MATCH EXISTING CONDITIONS.
25. ABOVEGROUND CONDUIT SHALL BE RIGID STEEL.
26. UNDERGROUND CONDUIT SHALL BE PVC VIRIS RIGERS EXCEPT WHERE ENTERING PANEL OR SWITCHGEAR. PROVIDE CONDUIT SEAL-OFFS AS REQUIRED BY CODE.
27. MINIMUM BURIAL DEPTH FOR UNDERGROUND CONDUITS SHALL BE 24".

[illegible]

<h1 style="text-align: center;">N. D. Eryou, PhD, PE</h1> <h2 style="text-align: center;">Consulting Engineer</h2>	
Southwest Florida Office	Central Florida Office
5051 Castello Drive, Suite 244 Naples, Florida 34103 Phone: (352) 684-7275 Fax (800) 660-6724 Email: alex@eryouengineering.com	1460 Breezy Way Spring Hill, FL 34608 Phone: (352) 684-7275 Fax (800) 660-6724 Email: alex@eryouengineering.com



LEADING EDGE AVIATION
2500 NORTH AIRPORT DRIVE
LOGAN, UTAH 81321



3977 AVIATION LOOP, SANFORD, FLORIDA 32773
PHONE: (631) 586-2000

INSTALLATION OF A NEW
ABOVE GROUND FUEL TANK
LEADING EDGE AVIATION
LOGAN-CACHE AIRPORT
2500 NORTH AIRPORT DRIVE
LOGAN, UTAH 81321

SHEET DESCRIPTION:

ELECTRICAL NOTES

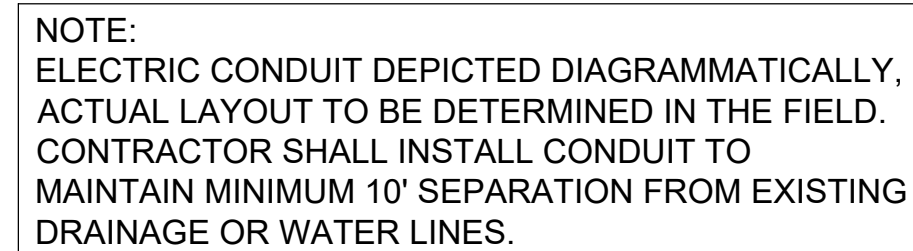
SEAL & SIGNATURE

DATE:	DECEMBER 2019
PROJECT NO.:	AEAC-LOGAN
DRAWING BY:	MSK
CHK. BY:	AGN
DWG No:	

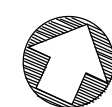
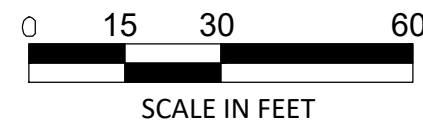
E-100

BRIAN E. LEWIS, P.E.
UTAH P.E. # 5013586-2203
EXP. DATE: 3/31/2021

CADD FILE NO.
LOGAN-CACHE-Set.dwg



OVERALL ELECTRICAL SITE PLAN



1. FOR ELECTRICAL ABBREVIATIONS, LEGEND, NOTES & SPECIFICATIONS, SEE DWG E-100.
2. CONDUIT ROUTING IS SHOWN DIAGRAMMATICALLY ONLY AND IS NOT INTENDING TO SHOW EXACT EQUIPMENT LOCATION OR CONDUIT ROUTING. THE ELECTRICAL CONTRACTOR SHALL DETERMINE, IN THE FIELD, THE BEST ROUTING TO AVOID ANY INTERFERENCE WITH EXISTING UNDERGROUND UTILITIES, EXISTING ABOVEGROUND STRUCTURES OR OTHER EQUIPMENT. THE ELECTRICAL CONTRACTOR SHALL FOLLOW EQUIPMENT MANUFACTURER'S RECOMMENDATIONS FOR INSTALLATION AND TERMINATION OF CONDUIT AND WIRING.
3. GROUND CONNECTORS AT MAIN GROUND LOOP SHALL BE MADE USING EXOTHERMIC CONNECTIONS, SIMILAR TO "CADWELD" OR APPROVED EQUAL.
4. THE NEW GROUND LOOP CABLE SHALL BE CONTINUOUS.
5. GROUNDING CABLE SHALL BE INSTALLED WITHOUT SHARP BENDS OR KINKS, AND WHERE BENDS OR LOOPS ARE REQUIRED, THEY SHALL BE MADE WITH AS LARGE A RADIUS AS POSSIBLE.
6. ALL CONNECTIONS TO BE GROUNDED, CONNECTED OR BONDED MUST BE MADE TO CLEAN AND BRIGHT METAL SURFACES.
7. ELECTRICAL CONTRACTOR SHALL VERIFY GROUND CONNECTIONS POINTS ON COMPRESSOR AND DRYER SKIDS.
8. BURIED GROUND WIRE SHALL BE A MINIMUM OF 24 INCHES BELOW FINISHED GRADE.
9. GROUNDING SHALL BE PERFORMED AS SPECIFIED IN THE 2008 NEC, ARTICLE 250.
10. GROUND WIRES THRU CONCRETE SHALL HAVE A SLEEVE THAT EXTENDS 4" ABOVE GRADE. THE SLEEVES SHALL BE SCHEDULE 40 PVC PIPE FILLED WITH GE RTV SILICONE. AFTER GROUND WIRE HAS BEEN INSTALLED.
11. #4/0 BARE COPPER GROUND WIRE SHALL BE RUN IN TRENCH WITH POWER CONDUITS AND CONTROL CONDUITS.
12. USE COUPLING AND DRIVING STUD TO DRIVE GROUND ROD TO AVOID MUSHROOMING.
13. BOND TOGETHER ALL CONDUIT STUB-UPS IN SAME LOCATION AND CONNECT TO MAIN GROUND CABLE.
14. THE NEW GROUNDING SYSTEM SHALL BE TESTED TO SHOW A RESISTANCE TO GROUND OF NO MORE THAN 25 OHMS.
15. GROUND TESTS CALLED FOR IN NOTES 14 SHALL BE CARRIED OUT USING A "DEDICATED GROUND TESTER".
16. REMOVABLE GUARD POSTS HAVE SUBSTANTIAL CONCRETE FOOTING SEE POST GROUNDING DETAIL ON THIS DRAWING. ELECTRICAL CONTRACTOR SHALL COORDINATE LOCATION OF GROUND LOOP TO AVOID THESE FOOTINGS.
17. EACH VESSEL SHALL BE GROUNDED.
18. ALL CONDUITS IN PULL BOX SHALL BE BONDED TOGETHER AND CONNECTED TO MAIN GROUND LOOP WITH #2AWG COPPER WIRE.

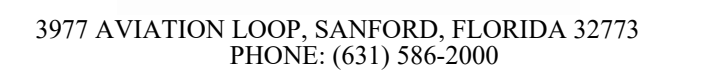
NOTICE
IT IS A VIOLATION OF LAW FOR ANY
PERSON, UNLESS ACTING UNDER THE
DIRECTION OF A PROFESSIONAL
ENGINEER, OR LICENSED ARCHITECT, TO
ALTER THIS DRAWING

N. D. Eryou, PhD, PE
Consulting Engineer

Central Florida Office

**1460 Breezy Way
Spring Hill, FL 34608
Phone: (352) 684-7275
Fax (800) 660-6724
alex@ervouengineering.com**

Email: alex@eryouengineering.com Fax: (666) 666-6124
 Email: alex@eryouengineering.com Fax: (666) 666-6124



INSTALLATION OF A NEW
ABOVE GROUND FUEL TANK
LEADING EDGE AVIATION
LOGAN-CACHE AIRPORT
2500 NORTH AIRPORT DRIVE
LOGAN, UTAH 81321

SHEET DESCRIPTION:

ELECTRICAL SITE, GROUNDING & BONDING PLAN

SEAL & SIGNATURE

DATE: DECEMBER 2019
PROJECT NO.: AEAC-LOGAN
DRAWING BY: MSK
CHK. BY: AGN
DWG No:

E-200

BRIAN E. LEWIS, P.E.
UTAH P.E. # 5013586-2203
EXP. DATE: 3/31/2021

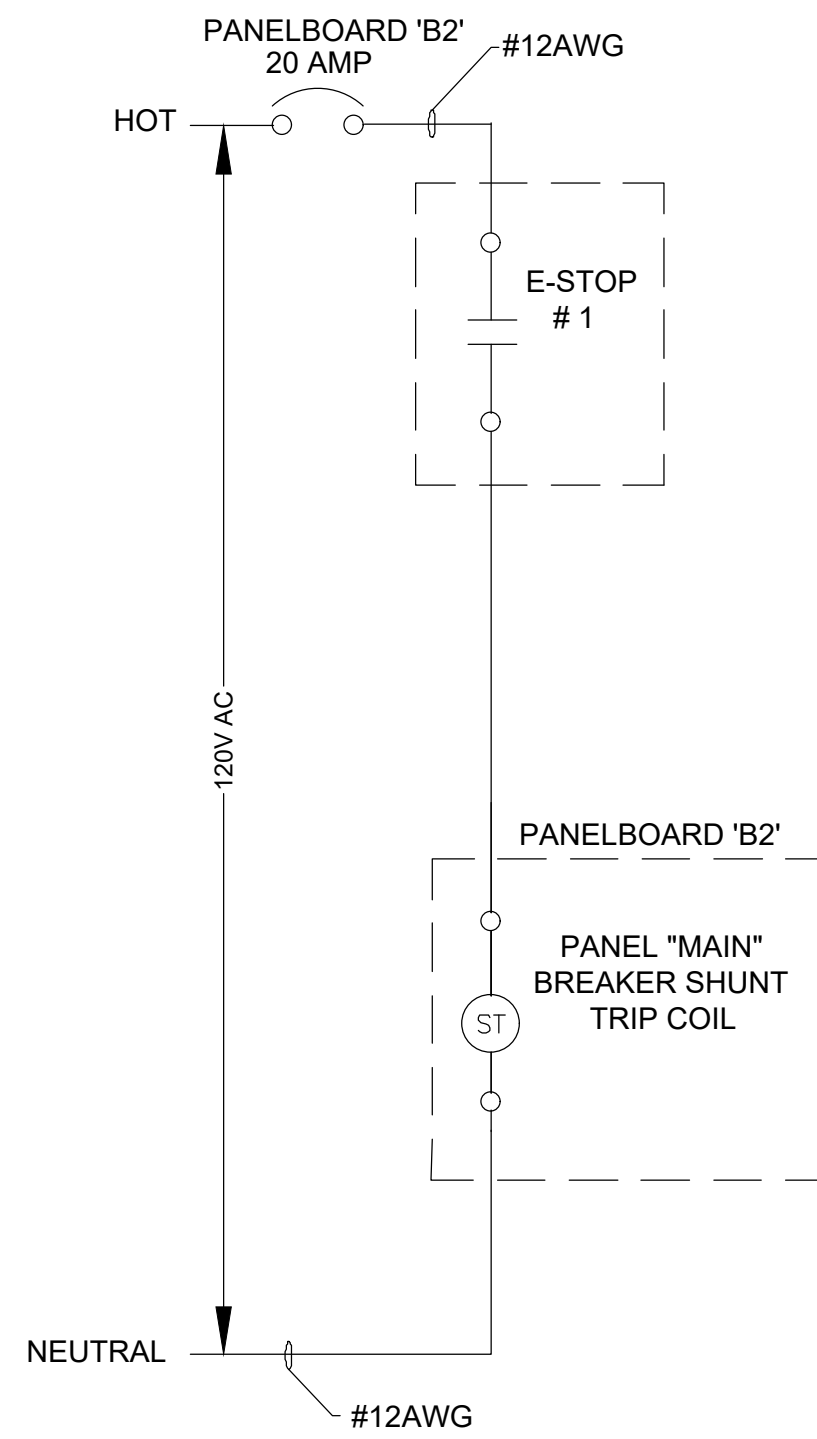
CADD FILE NO.
LOGAN-CACHE-Set.dwg

CONNECTED		VOLTAMPS		LOAD DESCRIPTION		WIRES	POLES	AMPS	CT.	SW.	AMPS	POLES	LOAD DESCRIPTION	WIRES	CONNECTED VA
AØ	BØ								A B					AØ	BØ
		SPACE							1	•	2				
									2	•	2				
3450		FUEL FARM - ELECTRIC RACK							3	•	20-20		EXISTING LOAD		
	1200	SUB-PANEL "B2" FEEDER				2	2	100	5	•					
									6	•					
3450	1200								7	•					
SUB-TOTAL VA		TOTAL CONNECTED VA		TOTAL CONNECTED AMPS									TOTAL DEMAND VA	SUB-TOTAL VA	
													TOTAL DEMAND AMPS		

PANELBOARD RATINGS				PANELBOARD FEATURES			
VOLTAGE		BUS AMPS		MAIN DEVICE		ENCLOSURE	
<input type="checkbox"/> 120/208 3ø,4W <input type="checkbox"/> 120/240 1ø,4W <input type="checkbox"/> 277/480 3ø,4W		<input type="checkbox"/> 100A <input type="checkbox"/> 400A <input type="checkbox"/> 200A <input type="checkbox"/> 600A <input type="checkbox"/> 225A <input type="checkbox"/> ____A		<input type="checkbox"/> MAIN LUGS ONLY <input type="checkbox"/> 100A CIRCUIT BREAKER <input type="checkbox"/> ____A FUSED SWITCH		<input type="checkbox"/> FLUSH <input type="checkbox"/> SURFACE <input type="checkbox"/> NEMA 4X <input type="checkbox"/> HINGED DOOR	
INTERUPTING RATING (AIC SYM)				SERVICE ENTRANCE RATED		BRANCH POLES	
<input type="checkbox"/> 10,000A <input type="checkbox"/> 30,000A <input type="checkbox"/> 65,000A <input type="checkbox"/> 14,000A <input type="checkbox"/> 42,000A <input type="checkbox"/> 100,000A <input type="checkbox"/> 22,000A <input type="checkbox"/> 50,000A <input type="checkbox"/> ____ ,000A <input type="checkbox"/> SERIES RATING PERMITTED		<input type="checkbox"/> NEUTRAL BUS <input type="checkbox"/> BUS MATERIAL <input type="checkbox"/> 50% <input type="checkbox"/> 200% <input type="checkbox"/> COPPER <input type="checkbox"/> 100% <input type="checkbox"/> ____ % <input type="checkbox"/> ALUMINUM <input type="checkbox"/> GROUND BUS REQUIRED		<input type="checkbox"/> KEYED LATCH <input type="checkbox"/> DOOR-IN-DOOR <input type="checkbox"/> STAINLESS STEEL <input type="checkbox"/> PAINTED STEEL		<input type="checkbox"/> 8 <input type="checkbox"/> 36 <input type="checkbox"/> CIRCUIT BREAKERS <input type="checkbox"/> FUSES <input type="checkbox"/> 18 <input type="checkbox"/> 42 <input type="checkbox"/> ____ TO BE GFCI BREAKERS <input type="checkbox"/> 24 <input type="checkbox"/> ____ <input type="checkbox"/> LOAD CENTER PERMITTED	
<input type="checkbox"/> ____ PANELS IN PARALLEL <input type="checkbox"/> THROUGH FEED LUGS REQUIRED				<input type="checkbox"/> NEMA 4X <input type="checkbox"/> HINGED DOOR <input type="checkbox"/> KEYED LATCH <input type="checkbox"/> DOOR-IN-DOOR <input type="checkbox"/> STAINLESS STEEL <input type="checkbox"/> PAINTED STEEL <input type="checkbox"/> NAMEPLATE			
				NOTES ① ② ③ ④ ⑤			

CONNECTED VOLTPS		LOAD DESCRIPTION	WRES AWG	POLES	AMPS	BUS A B	TH X	AMPS	POLES	LOAD DESCRIPTION	WRES AWG	CONNECTED VA	
AØ	BØ											AØ	BØ
360		LIGHTING	12	1	20	1	2			SPACE			
	600	CARD READER - M4000	12	1	20	3	4						
1200		HOSE REEL	12	1	20	5	6						
	600	DISPENSER	12	1	20	7	8						
1920		(HP) DISPENSER PUMP MOTOR	10	1	20	9	10						
		SPACE				11	12						
						13	14						
						15	16						
						17	18						
						19	20						
						21	22						
						23	24						
3480	1200		3480	1200									
SUB-TOTAL VA		TOTAL CONNECTED VA	TOTAL CONNECTED AMPS							TOTAL DEMAND VA		SUB-TOTAL VA	
										TOTAL DEMAND AMPS			

PANELBOARD RATINGS				PANELBOARD FEATURES			
VOLTAGE		BUS AMPS		MAIN DEVICE		ENCLOSURE	
<input type="checkbox"/> 120/208 3ø,4W	<input type="checkbox"/> 100A	<input type="checkbox"/> 400A	<input type="checkbox"/> MAIN LUGS ONLY		<input type="checkbox"/> FLUSH		BRANCH POLES
<input type="checkbox"/> 120/240 1ø,4W	<input type="checkbox"/> 200A	<input type="checkbox"/> 600A	<input type="checkbox"/> 100A CIRCUIT BREAKER		<input type="checkbox"/> SURFACE		<input type="checkbox"/> CIRCUIT BREAKERS <input type="checkbox"/> FUSES
<input type="checkbox"/> 277/480 3ø,4W	<input type="checkbox"/> 225A	<input type="checkbox"/> ___A	<input type="checkbox"/> ___A FUSED SWITCH		<input type="checkbox"/> NEMA 4X		<input type="checkbox"/> ___ TO BE GFCI BREAKERS
<input type="checkbox"/> INTERRUPTING RATING (AIC SYM)				<input type="checkbox"/> SERVICE ENTRANCE RATED		<input type="checkbox"/> MINGED DOOR	
<input type="checkbox"/> 10,000A	<input type="checkbox"/> 30,000A	<input type="checkbox"/> 65,000A	NEUTRAL BUS <input type="checkbox"/> BUS MATERIAL		<input type="checkbox"/> KEYS LATCH		NOTES ① SHUNT TRIP MAIN BREAKER FOR E-STOP CIRCUIT ② ③ ④ ⑤
<input type="checkbox"/> 14,000A	<input type="checkbox"/> 42,000A	<input type="checkbox"/> 100,000A	<input type="checkbox"/> 50% <input type="checkbox"/> 200% <input type="checkbox"/> COPPER		<input type="checkbox"/> DOOR-IN-DOOR		
<input type="checkbox"/> 22,000A	<input type="checkbox"/> 50,000A	<input type="checkbox"/> ___000A	<input type="checkbox"/> 100% <input type="checkbox"/> ___% <input type="checkbox"/> ALUMINUM		<input type="checkbox"/> STAINLESS STEEL		
<input type="checkbox"/> SERIES RATING PERMITTED			<input type="checkbox"/> GROUND BUS REQUIRED		<input type="checkbox"/> PAINTED STEEL		
<input type="checkbox"/> ___ PANELS IN PARALLEL			<input type="checkbox"/> THROUGH FEED LUGS REQUIRED		<input type="checkbox"/> NAMEPLATE		



ELECTRICAL SINGLE LINE DIAGRAM

[illegible]

NOTICE

IT IS A VIOLATION OF LAW FOR ANY
PERSON, UNLESS ACTING UNDER THE
DIRECTION OF A PROFESSIONAL
ENGINEER, OR LICENSED ARCHITECT, TO
ALTER THIS DRAWING

Central Florida Office

5051 Castello Drive, Suite 244
Naples, Florida 34103
Phone: (352) 684-7275
Fax (800) 660-6724
Email: alex@eryouengineering.com

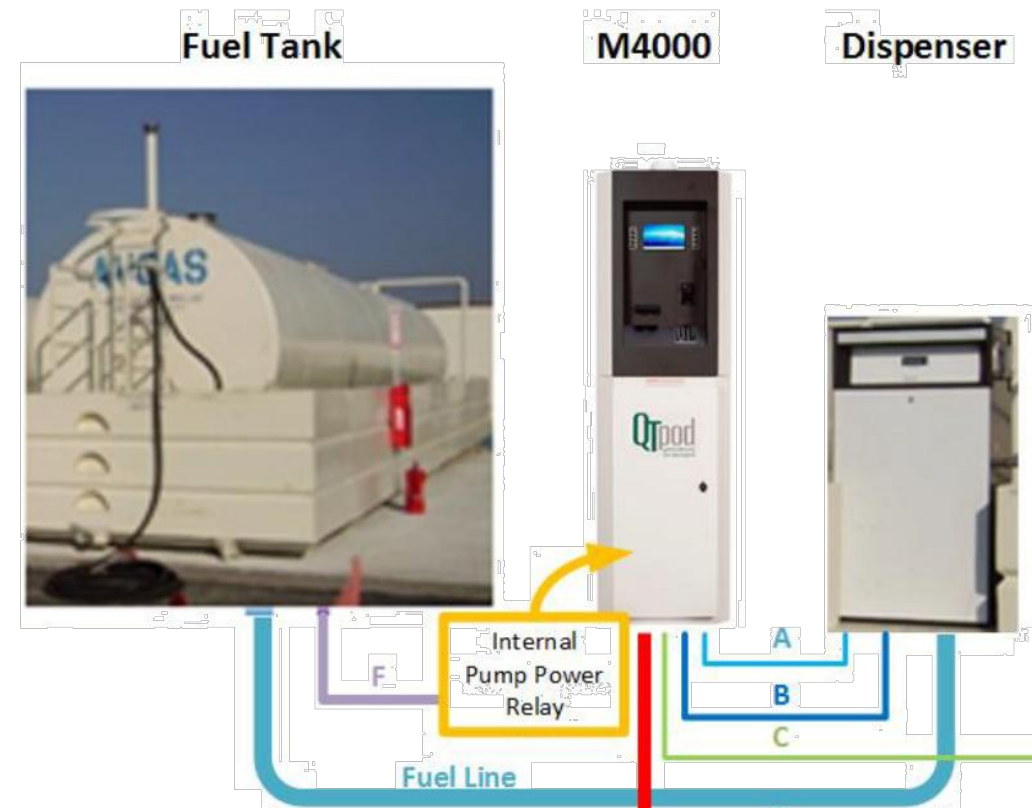
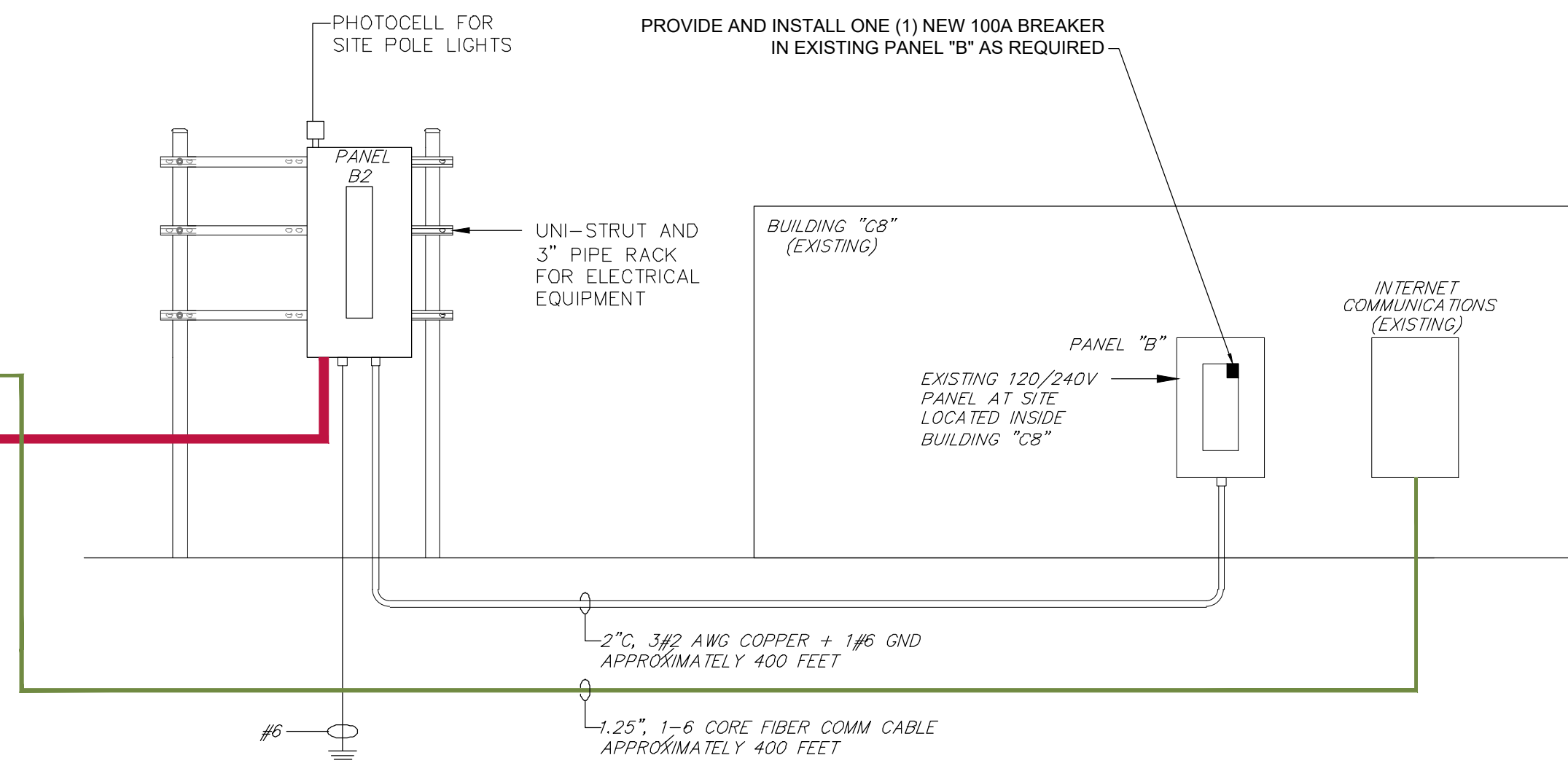


Figure 8 - Dispenser Field Wiring - Option E

<u>Rigid Conduit</u>	<u>Size</u>	<u>Description of wires inside conduit</u>
A	1/2"	Low voltage for pulser wires
B	3/4"	High voltage for dispenser signal wire (reset, clear, slow & fast valves)
C	1/2"	Low voltage for Ethernet Cable (if needed)
D	3/4"	Multiple High voltage for pump motor, terminal and dispenser power
E	1/2"	High voltage pump control wiring



ELECTRICAL RISER DIAGRAM

SOURCE = 120/240V NO SCALE



LEADING EDGE AVIATION
2500 NORTH AIRPORT DRIVE
LOGAN, UTAH 81321



3977 AVIATION LOOP, SANFORD, FLORIDA 32773
PHONE: (631) 586-2000

INSTALLATION OF A NEW
ABOVE GROUND FUEL TANK
LEADING EDGE AVIATION
LOGAN-CACHE AIRPORT
2500 NORTH AIRPORT DRIVE
LOGAN, UTAH 81321

SHEET DESCRIPTION:

ELECTRICAL DIAGRAMS & PANELBOARD SCHEDULE

SEAL & SIGNATURE

DATE: DECEMBER 2019
PROJECT NO.: AEAC-LOGAN
DRAWING BY: MSK
CHK. BY: AGN
DWG No:

E-300

BRIAN E. LEWIS, P.E.
UTAH P.E. # 5013586-2203
EXP. DATE: 3/31/2021

CADD FILE NO.
LOGAN-CACHE-Set.dwg

LOGAN – CACHE AIRPORT AUTHORITY BOARD
FEBRUARY 6, 2025

ATTACHMENT E

TOWER REPAIR - Specifications Historic Tower Logan-Cache Airport

Clean up-Remove and dispose of all debris on all levels (four levels) of the structure

Tear out and remove carpet, pad, and damaged drywall

Tear off and remove acoustic ceiling tiles

Repair Roof

Roof-Tear off and Dispose of existing roofing materials

Install new 60 mil membrane

Install flashing and curbing

Glass Repair

Install tempered glass to match existing material in existing frame works.

Replace the rotting wood sill material

Install flashing to preserve wood sills

Paint/seal wood sills to preserve

Other

ALTERNATE – TOWER DEMO

Demolish tower and dispose of all debris

Restore site to match surrounding area

Raymond Construction

Sorensen & Gnehm Const

Paul Davis

3,500.00

\$ _____

4,060.00

2,400.00

3,458.95

\$ _____

1,150.00

2,600.00

711.74

\$ _____

8,125.00

8,430.00

1,455.32

\$ _____

13,329.00

2,815.63

\$ _____

inc

2,435.30

\$ _____

56,801.00

68,801.00

12,544.79

\$ _____

3,133.00

3,200.00

987.97

\$ _____

2,130.00

7,139.86

\$ _____

1,737.00

582.94

=

18,326.20

=

90,465.00

107,257.20

32,132.50

\$ _____

62,506.00

-

-

\$ _____

7,887.00

-

-

70,393.00

-

-