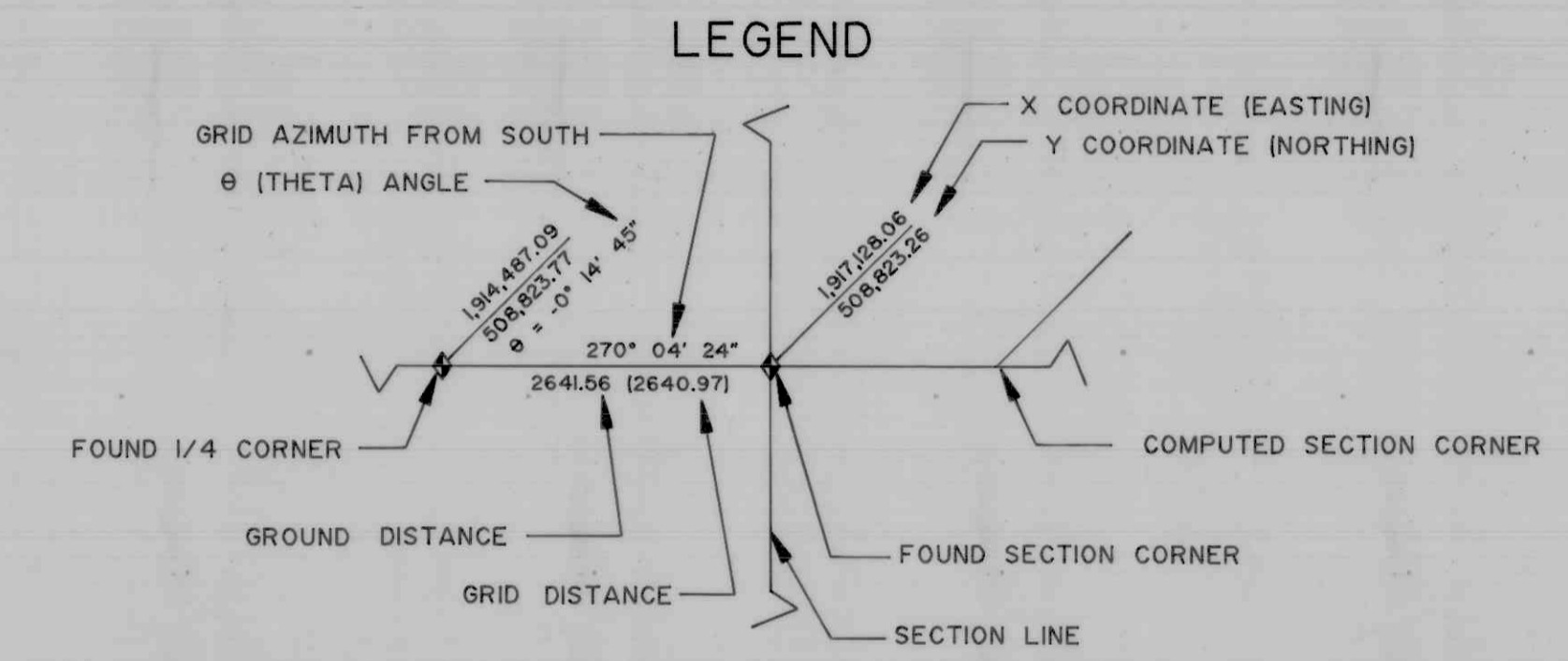
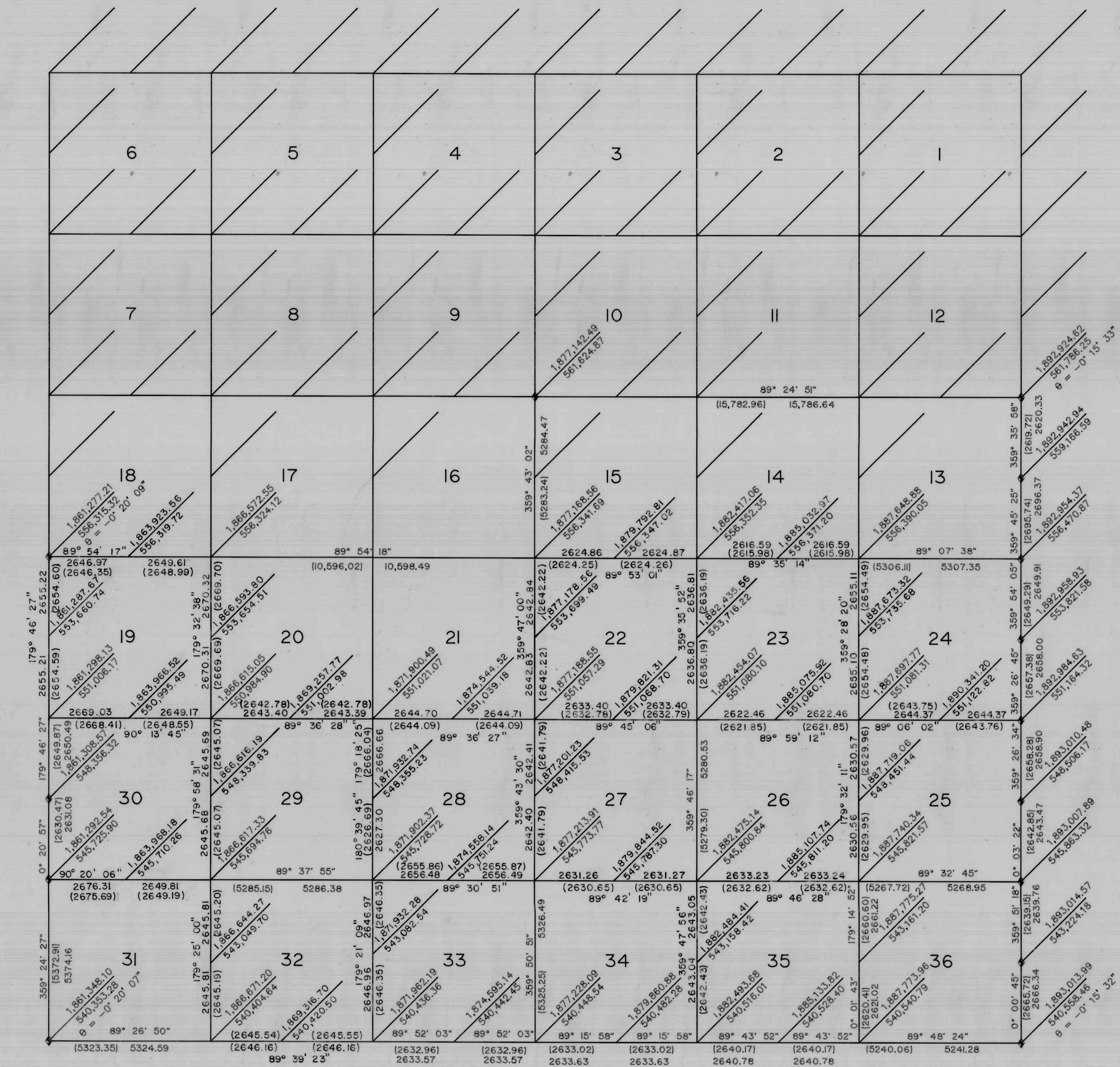


STATE COORDINATE  
8  
DEPENDENT RESURVEY  
OF A PORTION OF  
TOWNSHIP 13 NORTH, RANGE 1 WEST  
Salt Lake Base and Meridian

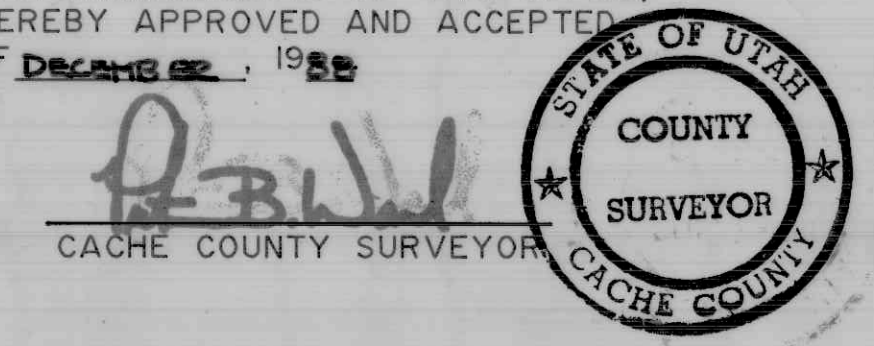
ALL AZIMUTHS AND COORDINATES SHOWN ARE BASED ON THE UTAH STATE COORDINATE SYSTEM, LAMBERT CONFORMAL PROJECTION, UTAH NORTH ZONE, NORTH AMERICAN 1927 DATUM.  
METHODS AND SPECIFICATIONS CONFORM TO SP 235, THE UTAH STATE COORDINATE SYSTEM, AND THE UNITED STATES COAST AND GEODETIC SURVEY.  
THE COORDINATES SHOWN WERE TRANSFERRED BY TRAVERSE OR TRIANGULATION FROM THE FOLLOWING UNITED STATES COAST AND GEODETIC SURVEY STATIONS: CROW, CURVE, LOGAN AIRPORT, AND NEWTON



SECTION TIES, ORIGINAL GENERAL LAND OFFICE OR BUREAU OF LAND MANAGEMENT SURVEY NOTES, TRAVERSES, CALCULATIONS, TIES TO TRAVERSE POINTS, ETC. USED IN OBTAINING THIS INFORMATION ARE AVAILABLE IN THE CACHE COUNTY SURVEYOR'S OFFICE.  
ALL SECTION CORNERS WERE ESTABLISHED AND VERIFIED PRIOR TO RESURVEY WORK ACCORDING TO THE RULES ESTABLISHED BY THE BUREAU OF LAND MANAGEMENT.  
GRID AZIMUTHS AND DISTANCES BETWEEN CORNERS NOT SET ARE FOR REFERENCE ONLY.

OFFICE OF THE CACHE COUNTY SURVEYOR

THE INFORMATION SHOWN ON THIS PLAT IS IN STRICT CONFORMITY TO THE FIELD NOTES ON FILE IN THE OFFICE OF THE COUNTY SURVEYOR, HAVING BEEN EXECUTED IN ACCORDANCE WITH THE REQUIREMENTS OF THIS OFFICE, AND THIS PLAT IS HEREBY APPROVED AND ACCEPTED THIS 6 DAY OF DECEMBER, 1988



**REVISIONS & ADDITIONS**

NO	DATE	BY	NOTES	APPROVED
1	7/20/89	DHM	ADDED COORDINATES FOR 1/4 CORNERS AND REVISED DATA BASED ON EVIDENCE RECOVERED WHEN CORNERS WERE MONUMENTED	

**NOTES**

- GEODETIC AZIMUTH = GRID AZIMUTH + θ
- θ = ANGLE BETWEEN GRID NORTH AND GEODETIC MERIDIAN
- GRID DISTANCE × 1.00023285 = GROUND DISTANCE
- ♦ FOUND CORNER

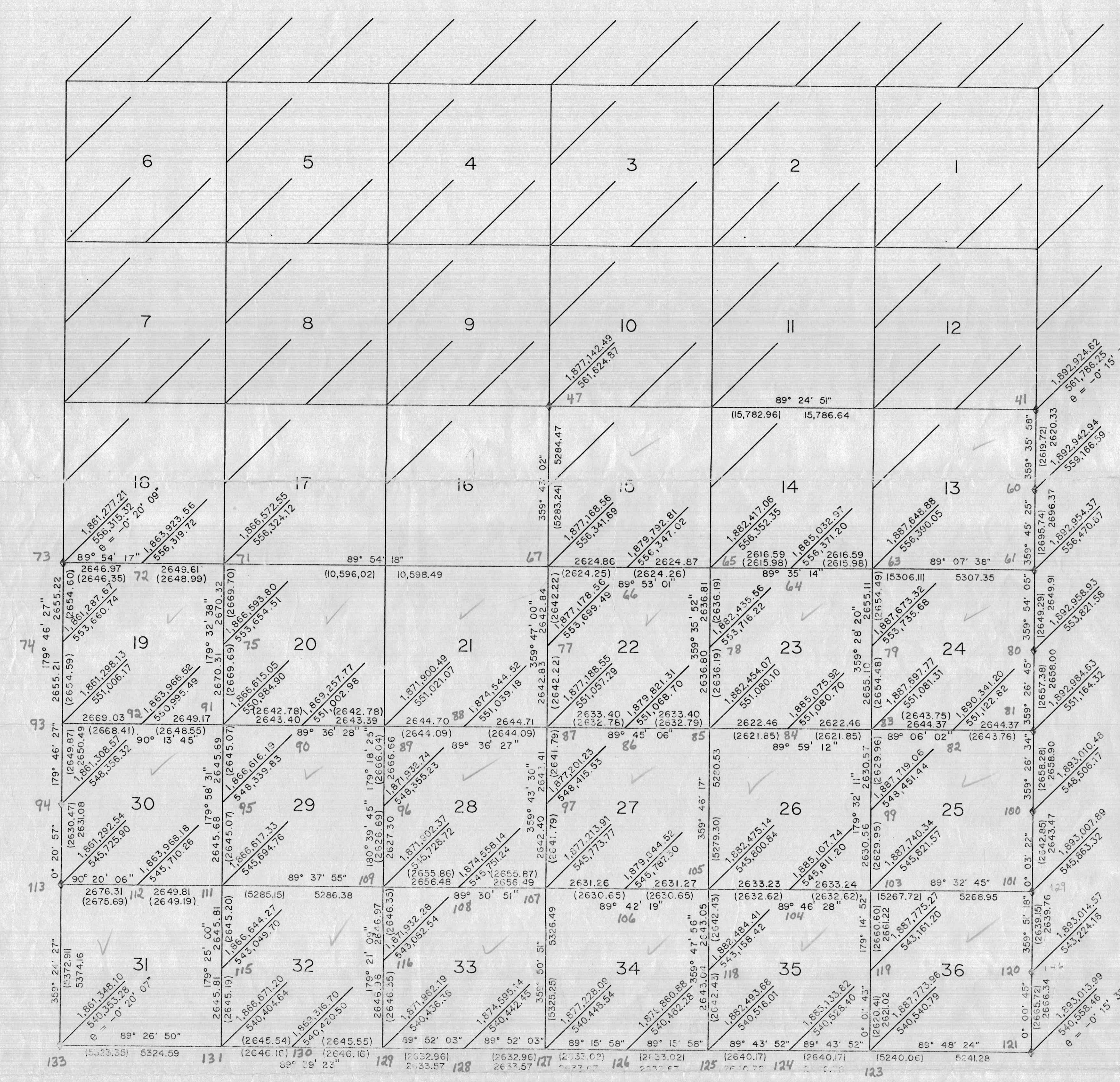


T13 N-R1 W

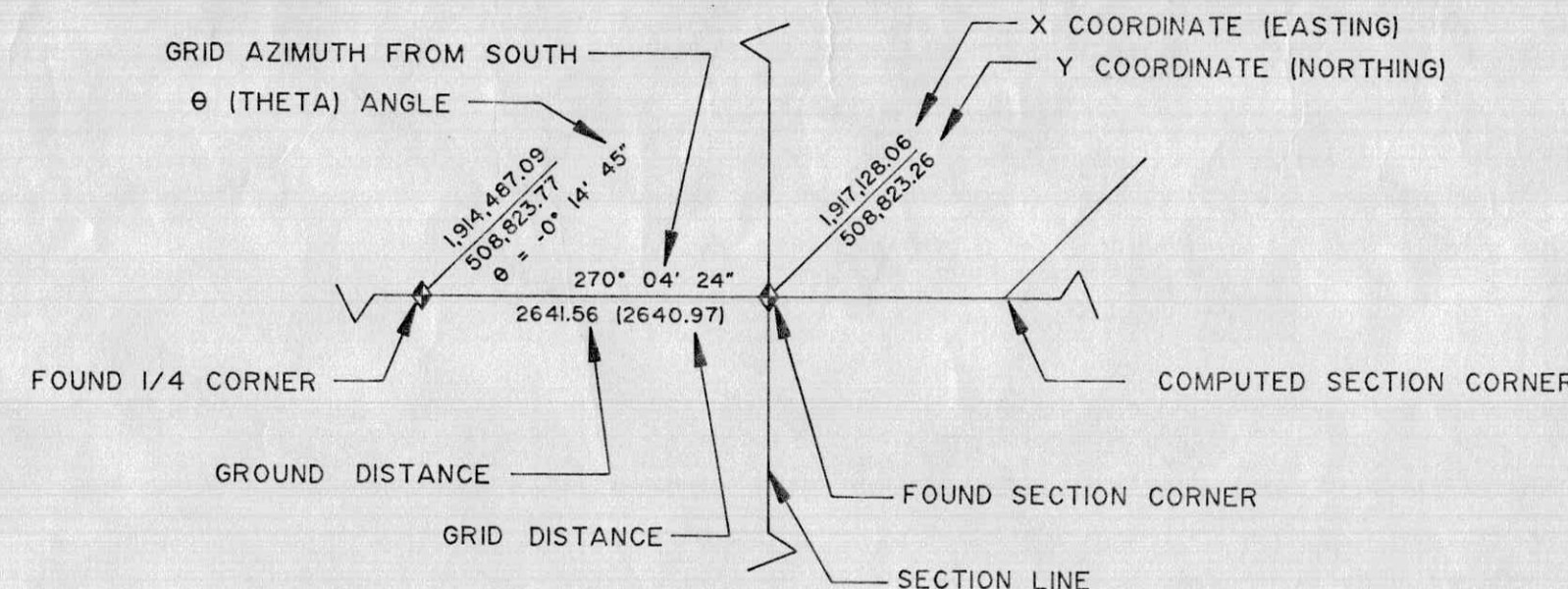
20 371 42

STATE COORDINATE  
8  
DEPENDENT RESURVEY  
OF A PORTION OF  
TOWNSHIP 13 NORTH, RANGE 1 WEST  
Salt Lake Base and Meridian

ALL AZIMUTHS AND COORDINATES SHOWN ARE BASED ON THE UTAH STATE COORDINATE SYSTEM, LAMBERT CONFORMAL PROJECTION, UTAH NORTH ZONE, NORTH AMERICAN 1927 DATUM.  
METHODS AND SPECIFICATIONS CONFORM TO SP 235, THE UTAH STATE COORDINATE SYSTEM, AND THE UNITED STATES COAST AND GEODETIC SURVEY.  
THE COORDINATES SHOWN WERE TRANSFERRED BY TRAVERSE OR TRIANGULATION FROM THE FOLLOWING UNITED STATES COAST AND GEODETIC SURVEY STATIONS: CROW, CURVE, LOGAN AIRPORT, AND NEWTON



LEGEND



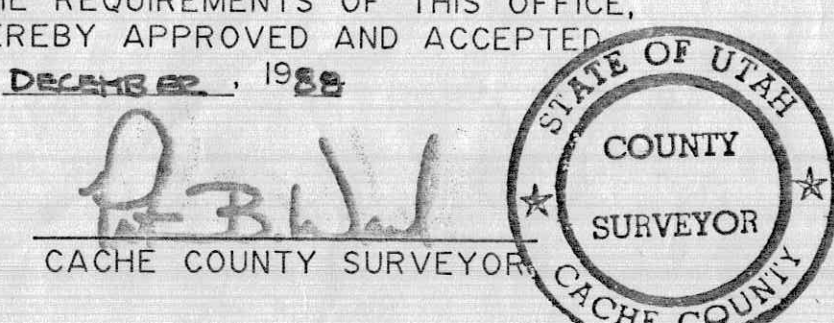
SECTION TIES, ORIGINAL GENERAL LAND OFFICE OR BUREAU OF LAND MANAGEMENT SURVEY NOTES, TRAVERSES, CALCULATIONS, TIES TO TRAVERSE POINTS, ETC. USED IN OBTAINING THIS INFORMATION ARE AVAILABLE IN THE CACHE COUNTY SURVEYOR'S OFFICE.

ALL SECTION CORNERS WERE ESTABLISHED AND VERIFIED PRIOR TO RESURVEY WORK ACCORDING TO THE RULES ESTABLISHED BY THE BUREAU OF LAND MANAGEMENT.

GRID AZIMUTHS AND DISTANCES BETWEEN CORNERS NOT SET ARE FOR REFERENCE ONLY.

OFFICE OF THE CACHE COUNTY SURVEYOR

THE INFORMATION SHOWN ON THIS PLAT IS IN STRICT CONFORMITY TO THE FIELD NOTES ON FILE IN THE OFFICE OF THE COUNTY SURVEYOR, HAVING BEEN EXECUTED IN ACCORDANCE WITH THE REQUIREMENTS OF THIS OFFICE, AND THIS PLAT IS HEREBY APPROVED AND ACCEPTED  
THIS 6 DAY OF DECEMBER, 1988



REVISIONS & ADDITIONS

NO	DATE	BY	NOTES	APPROVED
1	7/20/89	DHM	ADDED COORDINATES FOR 1/4 CORNERS AND REVISED DATA BASED ON EVIDENCE RECOVERED WHEN CORNERS WERE MONUMENTED	

NOTES

- GEODETIC AZIMUTH = GRID AZIMUTH +  $\theta$
- $\theta$  = ANGLE BETWEEN GRID NORTH AND GEODETIC MERIDIAN
- GRID DISTANCE  $\times$  1.00023285 = GROUND DISTANCE
- ♦ FOUND CORNER