

TOWNSHIP 12 NORTH, RANGE 1 EAST
Salt Lake Base and Meridian

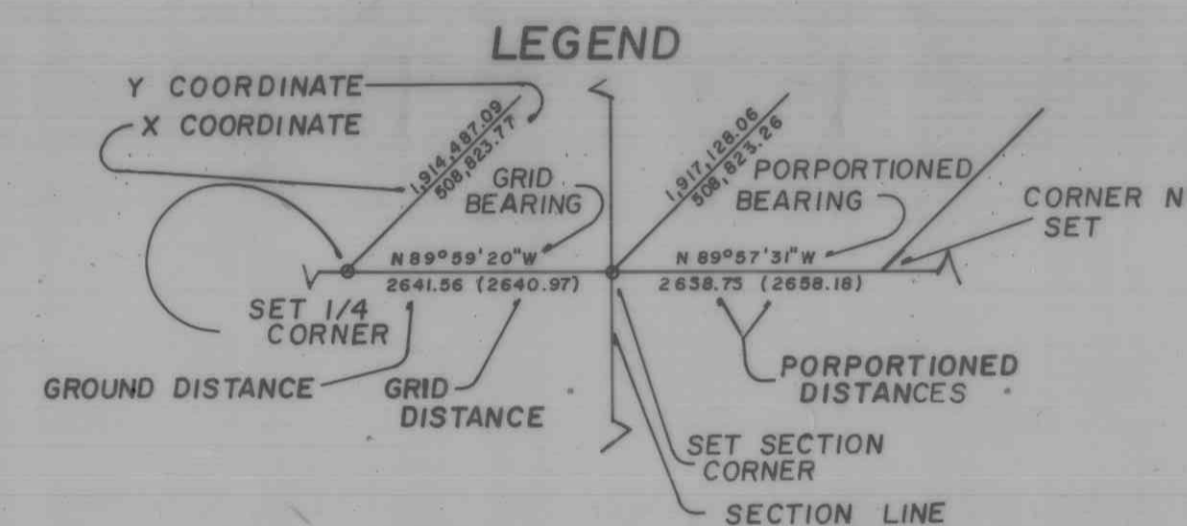
STATE COORDINATE

&

DEPENDENT RESURVEY

ALL BEARINGS AND COORDINATES SHOWN ARE BASED ON THE UTAH STATE COORDINATE SYSTEM, LAMBERT CONFORMAL PROJECTION, UTAH NORTHERN ZONE. METHODS AND SPECIFICATION PERFORMED BY SP 235, THE STATE COORDINATE SYSTEMS, COAST AND GEODETIC SURVEY.

THE COORDINATES SHOWN WERE TRANSFERRED BY TRAVERSE OR TRIANGULATION FROM THE FOLLOWING UNITED STATES COAST AND GEODETIC SURVEY STATIONS:



SECTION TIES, ORIGINAL GENERAL LAND OFFICE OR BUREAU OF LAND MANAGEMENT SURVEY NOTES, TRAVERSES, CALCULATIONS, TIES TO TRAVERSE POINTS, ETC. USED IN OBTAINING THIS INFORMATION ARE AVAILABLE IN THE CACHE COUNTY SURVEYOR'S OFFICE.

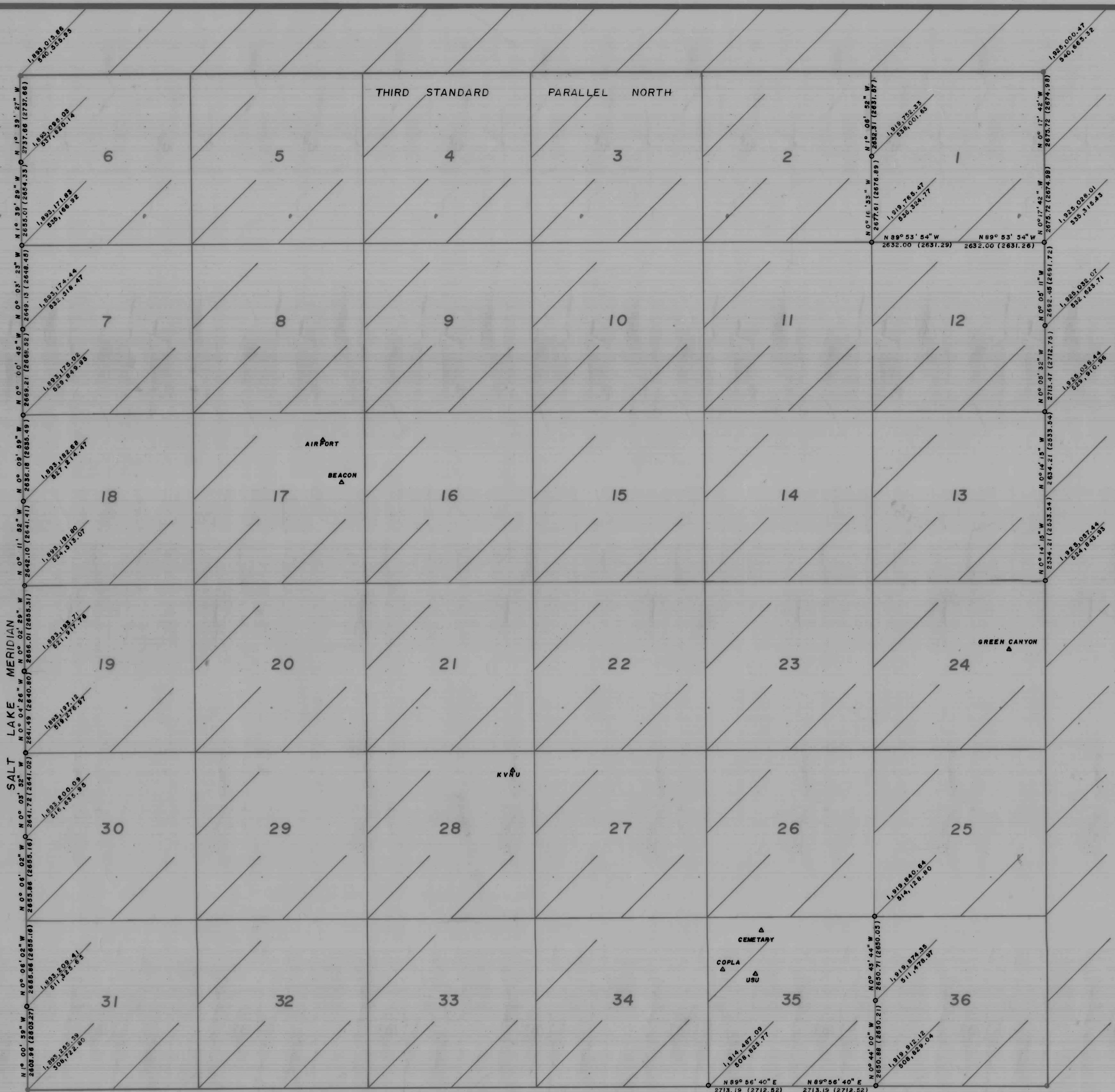
ALL SECTION CORNERS WERE ESTABLISHED AND VERIFIED PRIOR TO RESURVEY WORK ACCORDING TO THE RULES ESTABLISHED BY THE BUREAU OF LAND MANAGEMENT.

PORPORTIONED BEARINGS AND DISTANCE WITH CORNERS NOT SET ARE FOR REFERENCE ONLY.

OFFICE OF THE CACHE COUNTY SURVEYOR

THE INFORMATION SHOWN ON THIS PLAT IS IN STRICT CONFORMITY TO THE FIELD NOTES ON FILE IN THE OFFICE OF THE COUNTY SURVEYOR HAVING BEEN EXECUTED IN ACCORDANCE WITH THE REQUIREMENTS OF THIS OFFICE, AND THIS PLAT IS HEREBY APPROVED AND ACCEPTED THIS DAY OF , 19

CACHE COUNTY SURVEYOR



REVISIONS & ADDITIONS

NO.	DATE	BY	NOTES	APPROVED
1	12 / 82	SJR	ADD-MERIDIAN LINE, EAST RNG.LINE, PARTS OF NORTH & SOUTH TWP.LINE	
2	1 / 83	SJR	REVISE - SPC MERIDIAN LINE ONLY	

NOTES

1. NORTHWEST CORNER OF SECTION 31 IS WITHIN THE LOGAN CITY LAGOONS, BEARINGS AND DISTANCES ARE FOR REFERENCE ONLY.