

If found please return



Erwin U. Moser

975 N 3E

Logan Ut. 84321

Phone

752-1332

Stump Hollow

820020

Logan Canyon

7/77

**Weatherproof  
Field Book**

W 1/4 Cor is 9.2" W of EXISTING CORNER

7/5/77 EUM, KEVIN, RANDY

2x2" hub in line  
on top of hill

LOT 3

N 1/4 COR SEC 17  
(BRASS CAP)

TREE LINE

140

1180

HIGHWAY

LOT 4

LOT 6

18

1320

18

7  
6  
5  
4  
3  
2  
1  
0  
1  
2  
3  
4  
5  
6  
7

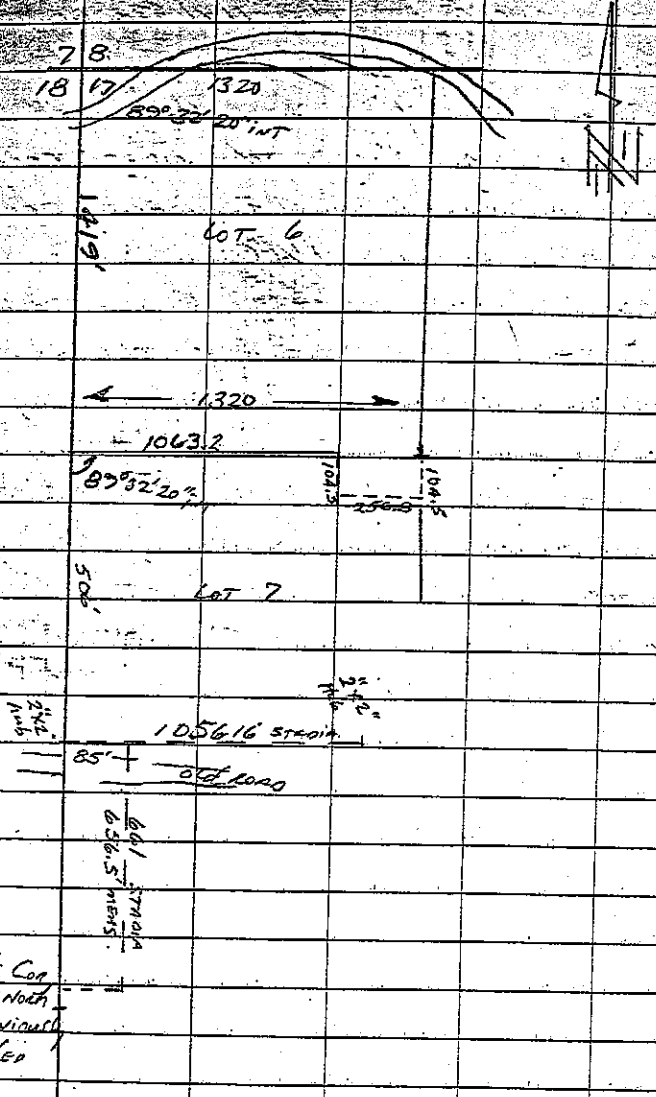
1

WE COMMENCED AT THE NW COR OF SEC 17 (MARKED BY A PIECE OF 3/4" PIPE DRIVEN IN THE GROUND) USING THE N 1/4 CORNER FOR A FORESIGHT WE PLACED THE NORTH CORNER COMMON TO LOTS 3 & 4 BY BREAKING CHAIN WEST 140' FROM SAID N 1/4 CORNER WE PLACE A 2x2" HUB AT THE CREST OF THE EAST HILL. THERE IS A DEFINITE CUT IN THE SLUBBY ON THE SUMMIT CUT BY EUM SURVEY PARTY 10 YEARS AGO.

WE ESTABLISHED THE NORTH CORNER COMMON TO LOTS 4 & 6 BY STADIA AND BY CHAINING IT FALLS IN THE SOUTH EDGE OF THE PAVEMENT OF US HIGHWAY 89.

12 1/2 hours each

7/15/77 EUM: KEVIN, RANDY



From THE NW Cor SEC 17 WE MEASURED SOUTH 1419' AND PLACED A 2"x2" ANG AT THE WEST CORNER COMMON TO LOT 6 & 7 WE TURNED EAST TO SET THE EAST CORNER COMMON TO LOTS 6 & 7. THE DENSE PINE GROVE NECESSITATED AN OFFSET TO THE SOUTH OF 104.5' THEN TO THE EAST 256.9' (TO COMPLETE THE 1220') THEN NORTH 104.5' - A STAKE AND NUB MARK THE CORNER.

CONTINUING SOUTH ON THE WEST LINE OF SEC 17 506' WE SET A ANG IN THE NORTH EDGE OF AN OLD ROAD JUST SOUTH AND EAST FROM A LARGE PINE TREE.

FROM THERE WE OFFSET TO THE EAST 85' AND PLACED A STAKE THEN CONTINUED EAST TO A POINT 1065.16' FROM THE WEST LINE. WE WILL USE THIS LINE FOR LOTS 4 & 5 AND 7 & 8.

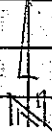
WE NEXT PROJECTED THE 85' OFFSET LINE SOUTH 661' TO ESTABLISH THE W 1/4 COR OF SEC 17. OUR PROJECTED POINT IS 9.2' NORTH OF A POINT PLACED BY A PIONEER SURVEY. TO VERIFY OUR MEASUREMENT WE BECAME CHAIN ALONG THE 3% SLOPE TO THE NORTH TO THE 85' OFFSET LINE. IT MEASURED 656.50' - AN ADJUSTMENT WILL BE MADE OF 4.5' SOUTH.

9 hours each

S

7/26/87

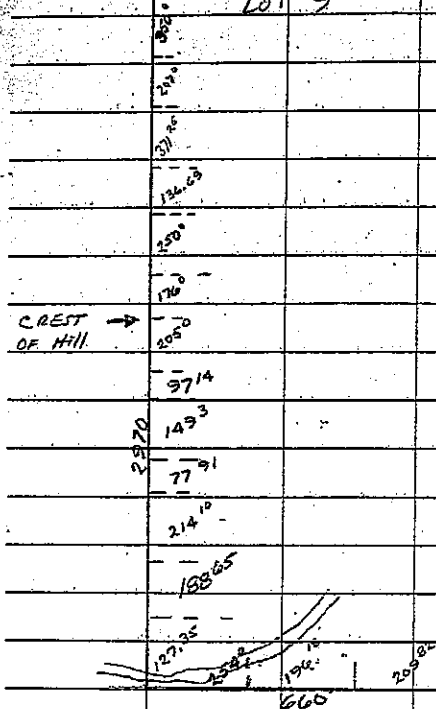
EUM, KANDY &amp; KEVIN



18 17

19 20

LOT 9



WE SET UP OVER THE SW COR OF SEC 17  
AND PROJECTED THE LINE SOUTH CUTTING THROUGH  
PINE AND QUAKERS IN 6 SHOTS: 356°; 207°;  
371°35'; 136°43'; 250°; 176° TO THE CREST OF A  
HILL.

THE NEXT WORK DAY WE VERIFIED LINE BY  
SETTING OVER THE WEST 1/4 OF SEC 8, SHOOTING  
OVER THE NW COR SEC 17 AND PROJECTED IT  
SOUTH - THE POINT ON THE CREST CHECKED  
GOOD.

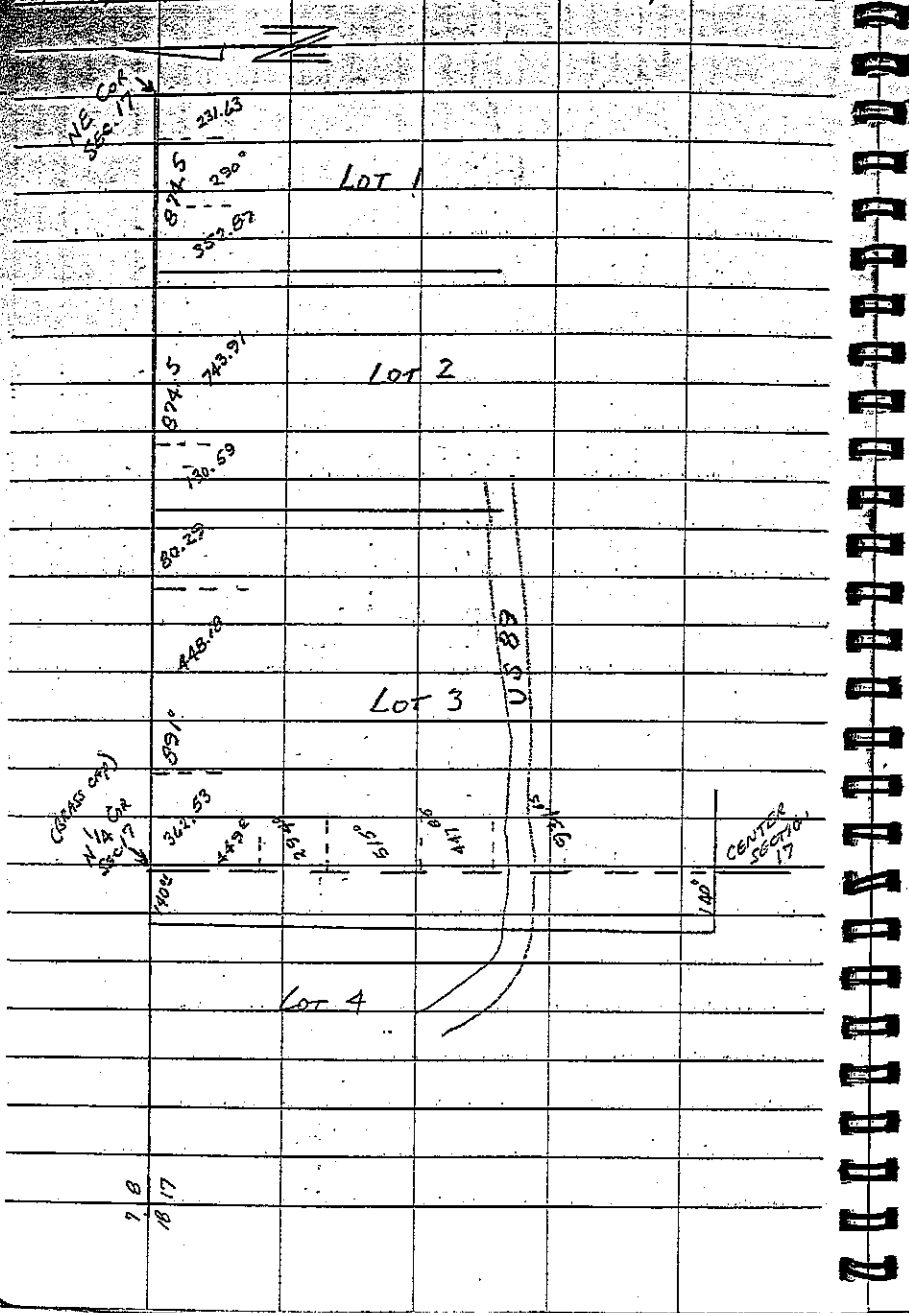
WE CONTINUED THE LINE SOUTH IN 7 DISTANCES  
TO THE SW COR OF LOT 9: 205°; 97°14';  
149°3'; 77°21'; 214°10'; 188°55'; 127°35'. THE  
POINT IS IN THE SOUTH EDGE OF A MOUNTAIN  
ROAD.

NEXT WE TURNED EAST 660' IN 3 SHOT  
SHOTS: 254°; 196°19'; 209°32' TO THE SE  
COR OF LOT 9

10 1/2 hrs

1/20/77

EUM, KANDY T, KEVIN



WE SET UP OVER THE N  $\frac{1}{4}$  COR OF SEC 17 SHOT TO THE NW COR OF SEC 17 AND SET THE NW COR OF LOT 3. NEXT WE TURNED A  $90^{\circ}$  ANGLE TO THE SOUTH AND SET A POINT SOUTH 449' FOR LATER USE. WE THEN SET ON A POINT EAST 1021.59' EAST OF THE N  $\frac{1}{4}$  COR AND SHOT THE NW COR FOR LINE AND SET THE NORTHWEST CORNER OF LOT 2 - ON THE WEST FACE OF A MOUNTAIN. WE SET THE NW COR OF LOT 1 AND PROJECTED THE LINE EAST IN 3 SHORT SHOTS TO LOCATE THE NE COR OF SEC 17 AS ESTABLISHED BY EUM IN 1965 (ON QUARTERS)

WE NEXT CONTINUED SOUTH FROM THE N  $\frac{1}{4}$  COR OF 17 IN 5 DISTANCES TO VERIFY THE LOCATION OF THE CENTER OF SEC 17: 449'; 294'; 515'; 447'; 934.35'. THE CENTER OF SEC 17 WAS CORRECTLY LOCATED.

$9\frac{1}{2}$  hrs EACH

112711Z EUM, KANDYK Kevin

July 1977

NEAR 1/4  
of Sec. 17

LOT 1

874.5

402.56

U.S. 89

874

LOT 2

874.5

402.56

LOT 3

1031

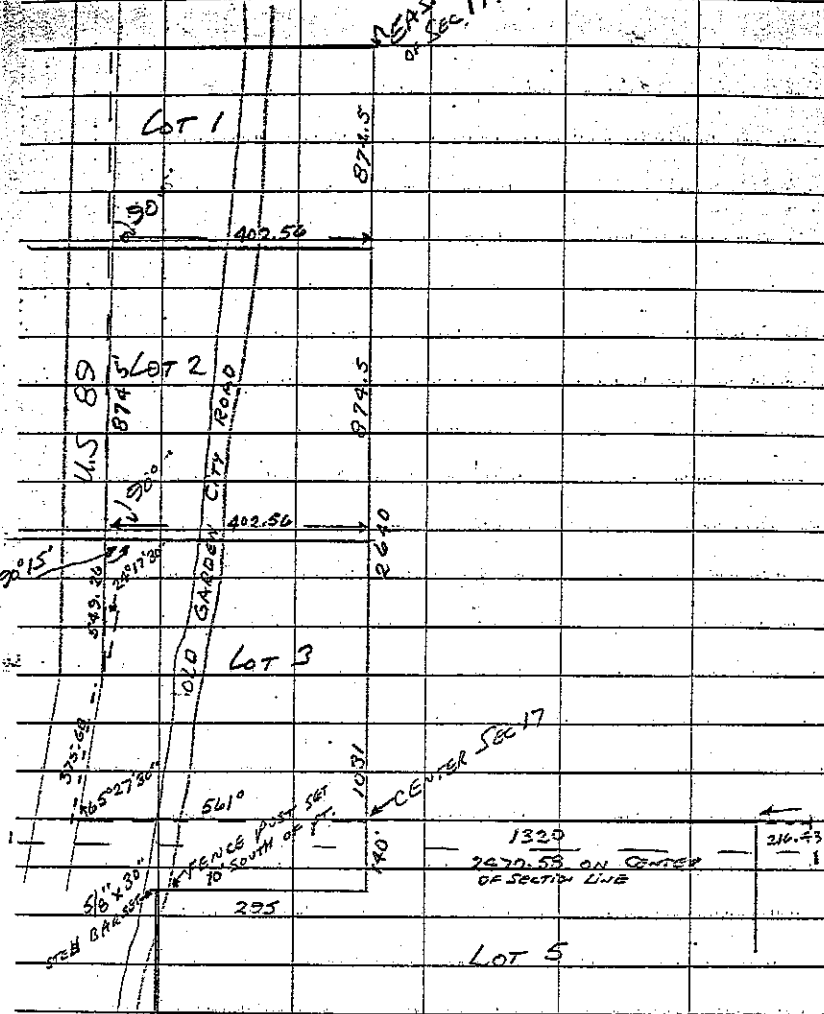
CENTER Sec 17

1320  
2670.58 ON CENTER  
OF SECTION LINE

216.43

295

LOT 5



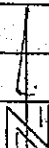
WE SET A POINT ON THE SOUTH SIDE OF U.S. HIGHWAY 89 - NORTH 561° FROM THE CENTER OF SEC 17 AND TURNED A 65°27'30" ANGLE TO THE EAST 375.68' TO WHERE ANOTHER POINT WAS SET ANOTHER ANGLE OF 24°17'30" WAS TURNED FOR A DISTANCE OF 549.26'. NEXT WE TURNED SOUTH 402.56' TO THE SW CORNER OF LOT 2. WE CONTINUED EAST 874.5' AND SOUTH 402.56' TO PLACE THE SW COR OF LOT 1. WE THEN LOCATED THE E 1/4 COR OF SEC 17 AS ESTABLISHED BY EUM IN 1965 WE SET OVER THE CENTER OF SEC 17 AND TURNED WEST 140° TO A POINT ON THE BROW OF A HILL. A CROSS WAS CUT ON A ROCK 6.5' EAST OF THE POINT FOR REFERENCE. THEN WE TURNED NORTH IN 2 SHORT SHOTS TO ESTABLISH THE NE COR OF LOT 5: 155.97', 139.35'. THE PT FALLS IN THE MIDDLE OF THE OLD GARDEN CITY ROAD A 5/8" x 30" STEEL BAR WAS DRIVEN DOWN ON POINT AND A 6" STEEL FENCE POST WAS DRIVEN DOWN ON LINE 102' SOUTH

WE NEXT SET THE SE COR OF LOT 5 BY PROJECTING FROM A PT N 934.5' FROM THE CENTER OF SEC 17 SOUTH 2470.58' THEN NORTH 216.43' TO THE POINT

1129/97

EUM, KANDY & KEVIN

78  
1817



LOT 7

W 1/4 Cor

32 1/2'

85°

LOT 8

We completed the project by projecting  
 the 85° offset line south 330' and  
 then turned west 85° to the corner of  
 lot 7-8.

We then drove 6" steel fence posts at  
 each corner, marked, painted and attached  
 Erwin's identifying tag to each corner.

July										Aug
1	2	5	6	20	22	25	26	28	29	4
3	6	37 1/2	1	28 1/2	27	30	31 1/2	22 1/2	27	5

TOTAL 219 hours

9 hours each