

U.S.U. to PROVIDENCE
C.R. 351

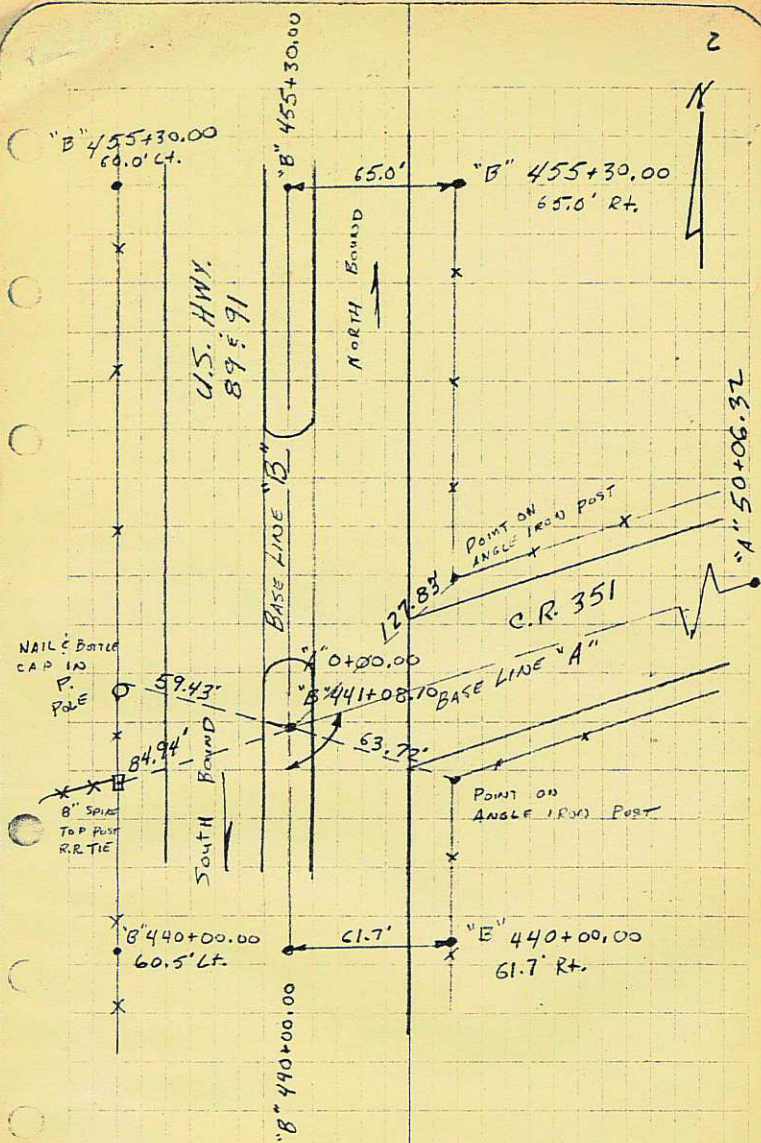
Sept. 2, 1990

T. BARLTON
P. PETERSON

70-28.002

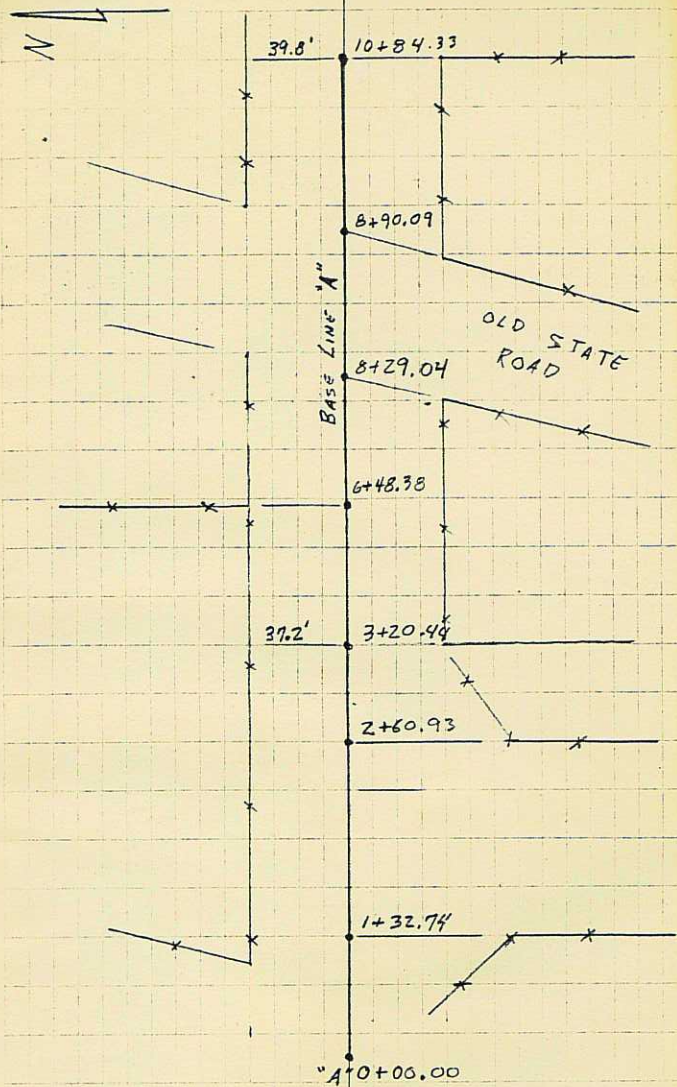
10
N X 100 = CH 10 = MM ± 2.54
CM

	B.S.	F.S.	+	DIST.
4" 0+00.00 441+08.10	B" 440+00.00	"A" 50+06.32	1) 226° 04' 30" H	
			2) 92° 08' 35" L	
			3) 318° 12' 40" L	
			A) 226-04-13	

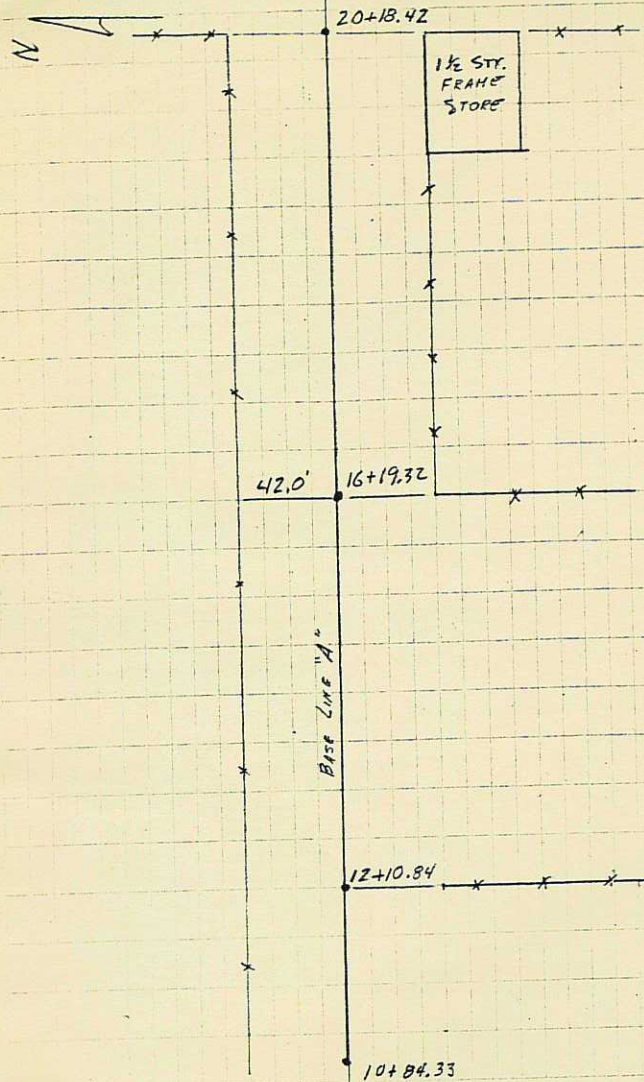


3

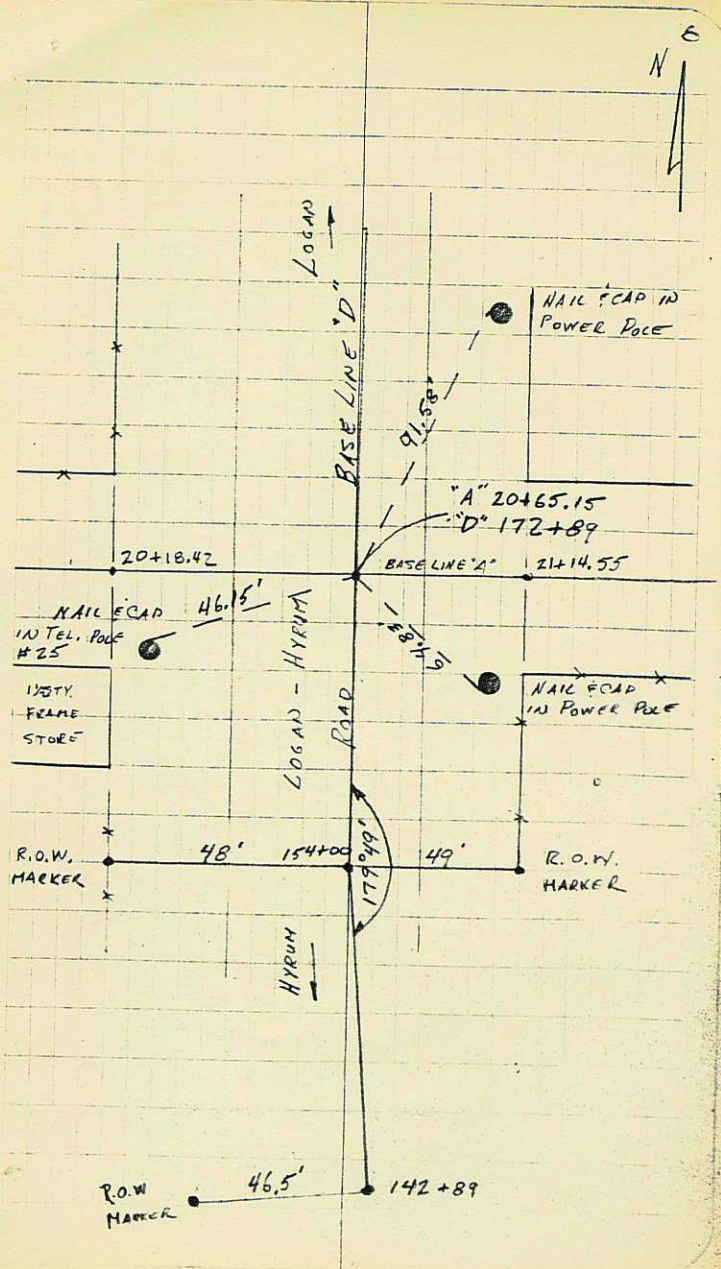
π	B.S.	F.S.	χ	DIST.
1+32.74	0+00.00	Æ	271-19 Rt.	66.5'
2+60.93	0+00.00	Æ	271-25 Rt.	69.3'
3+20.44	0+00.00	Æ	271-18 Rt.	32.3'
6+48.38	0+00.00	Æ	90-22 Rt.	40.3'
8+29.04	0+00.00	Æ	297-22 Rt.	33.9'
8+90.09	0+00.00	Æ	298-28 Rt.	54.9'
10+84.33	0+00.00	Æ	270-52 Rt.	48.7'



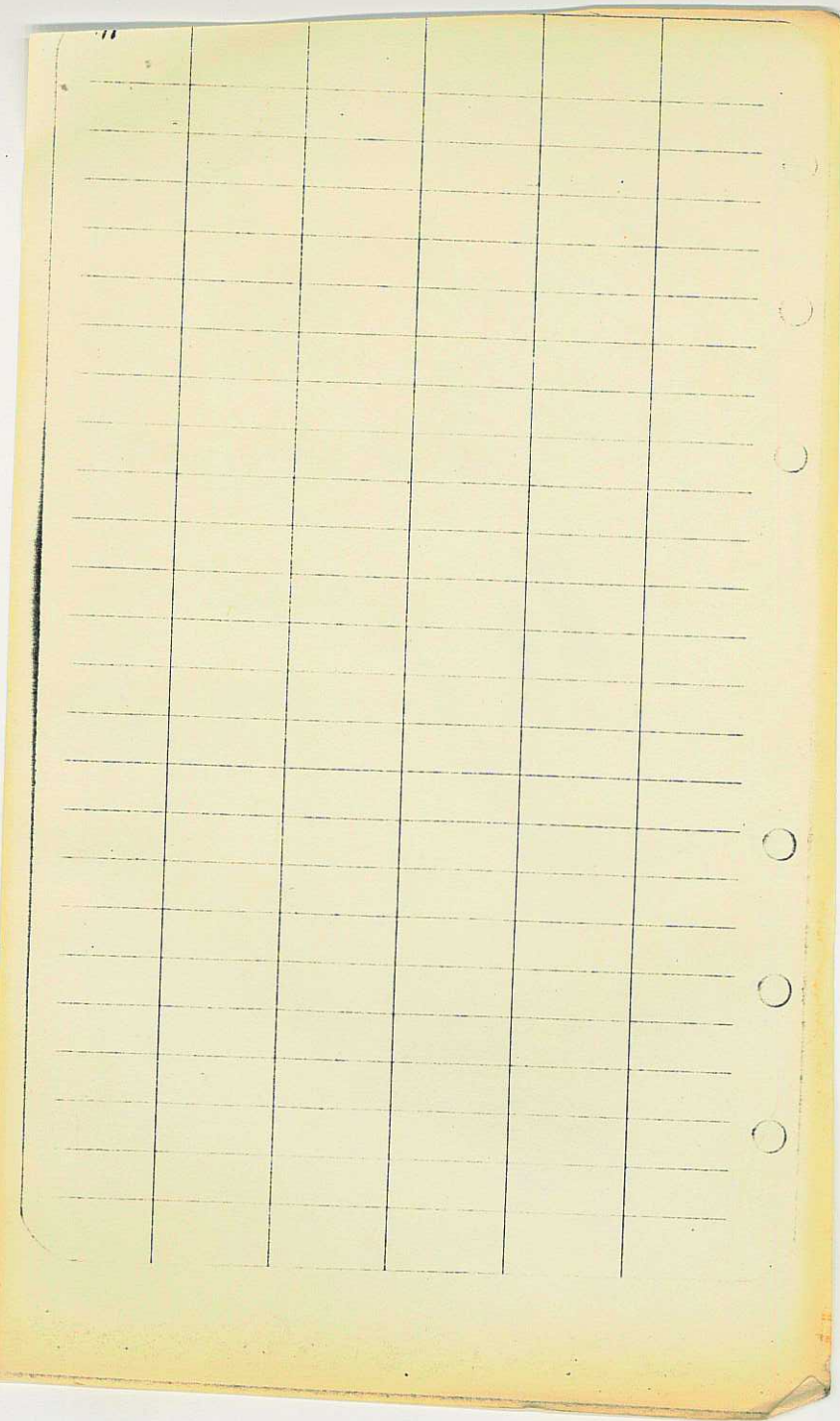
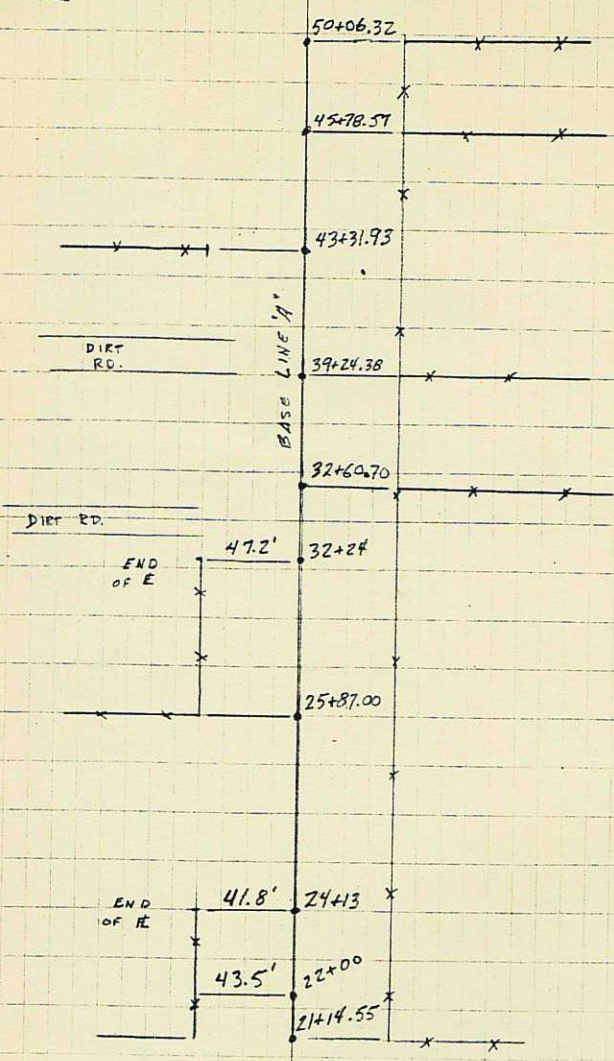
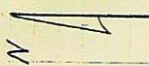
5 T	B.S.	F.S.	4	DIST.
12+10.84	0+00.00	ℓ	269-47 Rt.	50.3'
16+19.32	0+00.00	ℓ	272-25 Rt.	50.0'
20+18.42	0+00.00	ℓ	91-05 Rt.	47.2'
20+18.42	0+00.00	N.E. COR BLDG	271-27 Rt.	48.5'

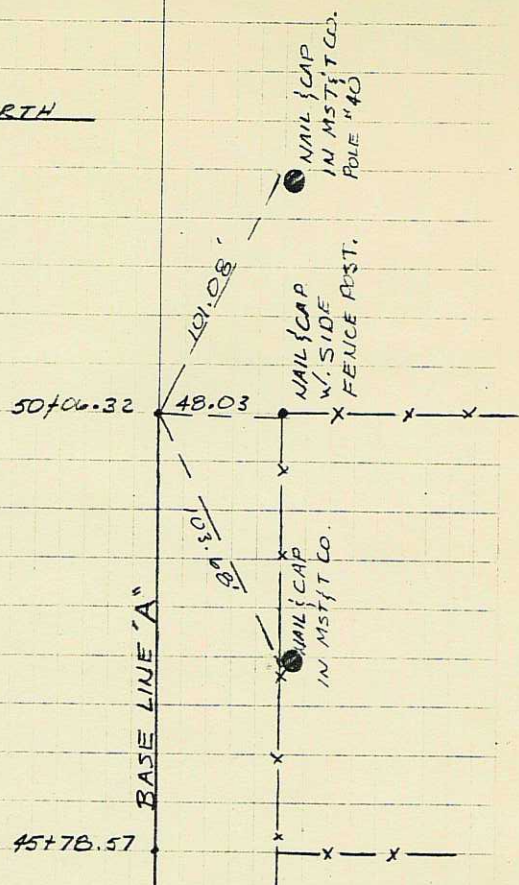


7	B.S.	F.S.	+	DIST.
A" 20+65.15				
B" 172+89	A" 0+00.00	D" 154+00	1)	270° 11' 50" RT
			2)	180° 23' 05"
			3)	90° 34' 15"
			A)	270° 11' 25"
100				
20	40			
24	60			
28	80			
32				
36				
40				
44				
48				
52				
56				
60				
64				
68				
72				
76				
80				
84				
88				
92				
96				
100				



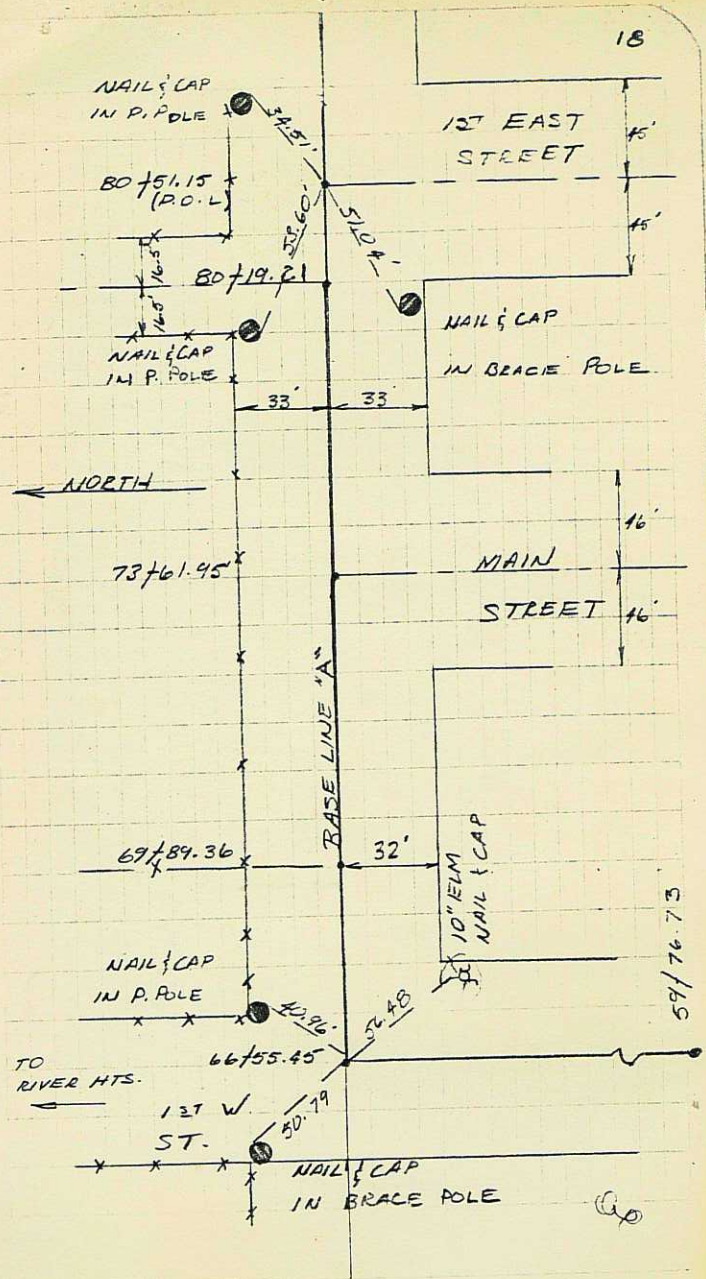
9	B.S.	F.S.	±	DIST.
21+14.55	0+00.00	±	270-22 Rt.	48.8'
25+37.00	0+00.00	±	89-18 Rt.	47.5'
32+60.70	0+00.00	±	269-52 Rt.	51.0'
39+24.38	0+00.00	±	270-33 Rt.	49.0'
43+31.93	0+00.00	±	89-58 Rt.	49.5'
45+78.57	0+00.00	±	270-11 Rt.	47.5'
50+06.32	0+00.00	±	269-24 Rt.	48.0'





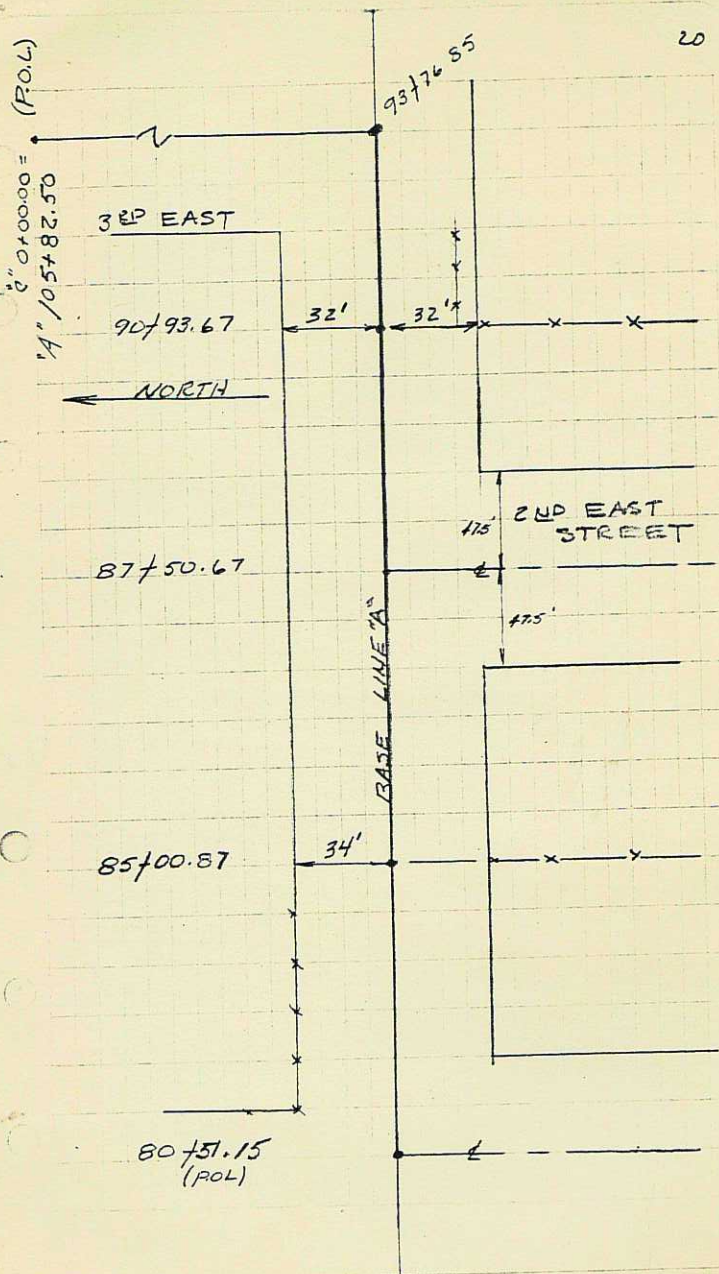
13

π	B.S.	F.S.	Δ	DIST.
52+79.18	0+00.00	$\frac{1}{2}$ R.D.	269-32 R.	
52+79.18	0+00.00	F.P.	57-52 R.	45.5'
52+79.18	0+00.00	F.P.	72-57 R.	51.9'
56+24.18	0+00.00	π	39-54 R.	49.0'
56+24.18	0+00.00	π	270-35 R.	49.0'
59+76.73	0+00.00	66+55.45	1) $89^{\circ} 41' 00''$ RT	
			2) $179^{\circ} 21' 50''$	
			3) $269^{\circ} 03' 00''$	
			4) $89^{\circ} 41' 00''$	

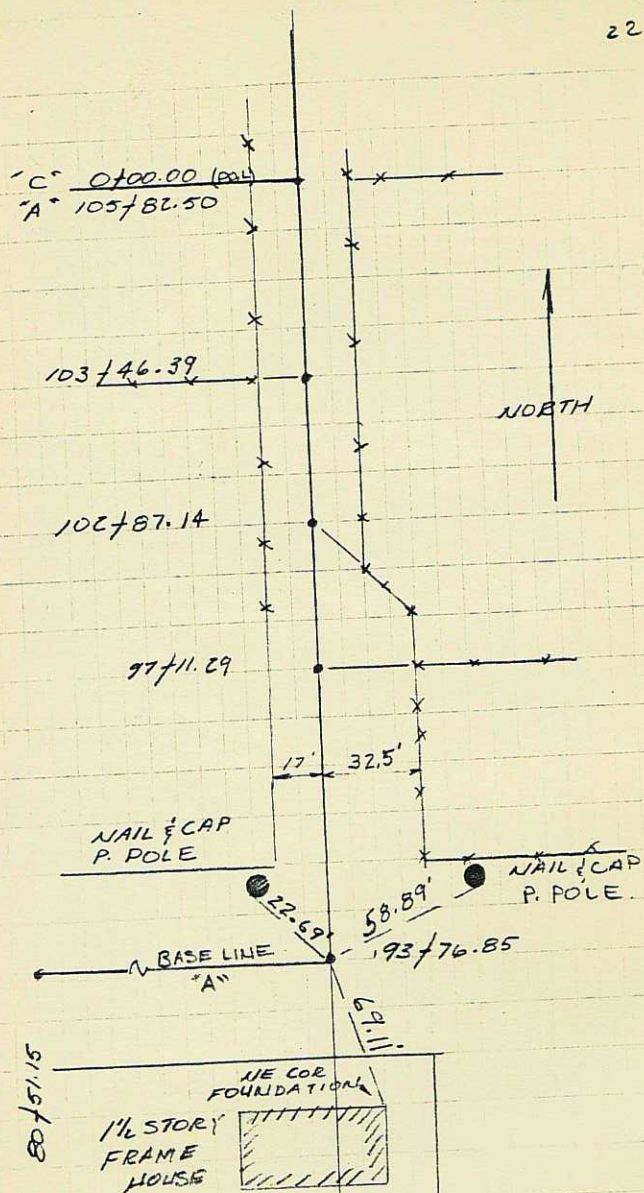


19

π	B.S.	F.S.	Δ	DIST.
35+00.87	66+55.45	E	271-07 Rt.	32.0'
87+50.67	66+55.45 & RD.		270-30 Rt.	
90+93.67	66+55.45	E	269-05 Rt.	29.0'
93+76.85	66+55.45	"A" 105+82.50 "C" 0+00.00	1) 90° 24' 20" L 2) 130° 28' 00" L 3) 270° 13' 50" L 4) 90° 24' 36" L	



Station	B.S.	F.S.	Angle	Dist.
97+11.29	93+76.85	℄	269-53 Rt.	32.5'
102+87.14	93+76.85	F.P.	322-05 Rt.	52.3'
102+87.14	93+76.85	F.P.	322-05 Rt.	28.4'
103+46.39	93+76.85	℄	91-20 Rt.	18.2'
4" 105+82.50 = 0" 0+00.00	A 93+76.85	C 22+82.19	1) 180-00-00 Rt.	
			2) 360-00-00	
			3) 180-00-00	
			4) 180-00-00 Rt.	



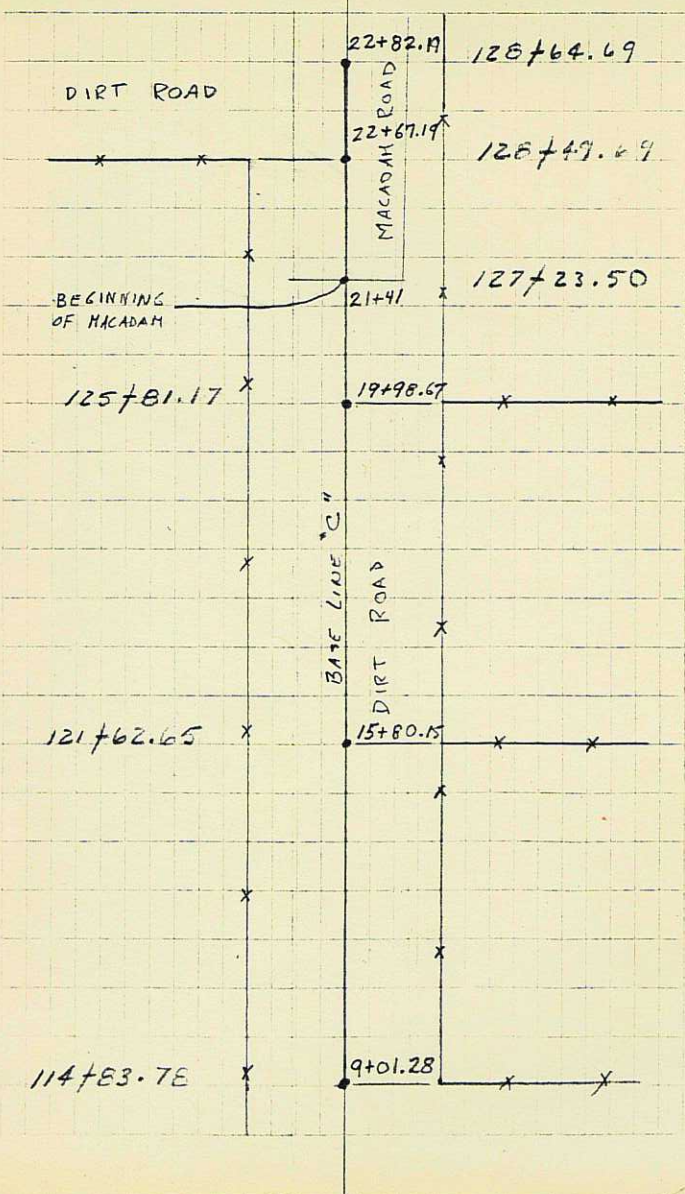
EQUATE BASE

LINE "A" WITH BASE
LINE "C"

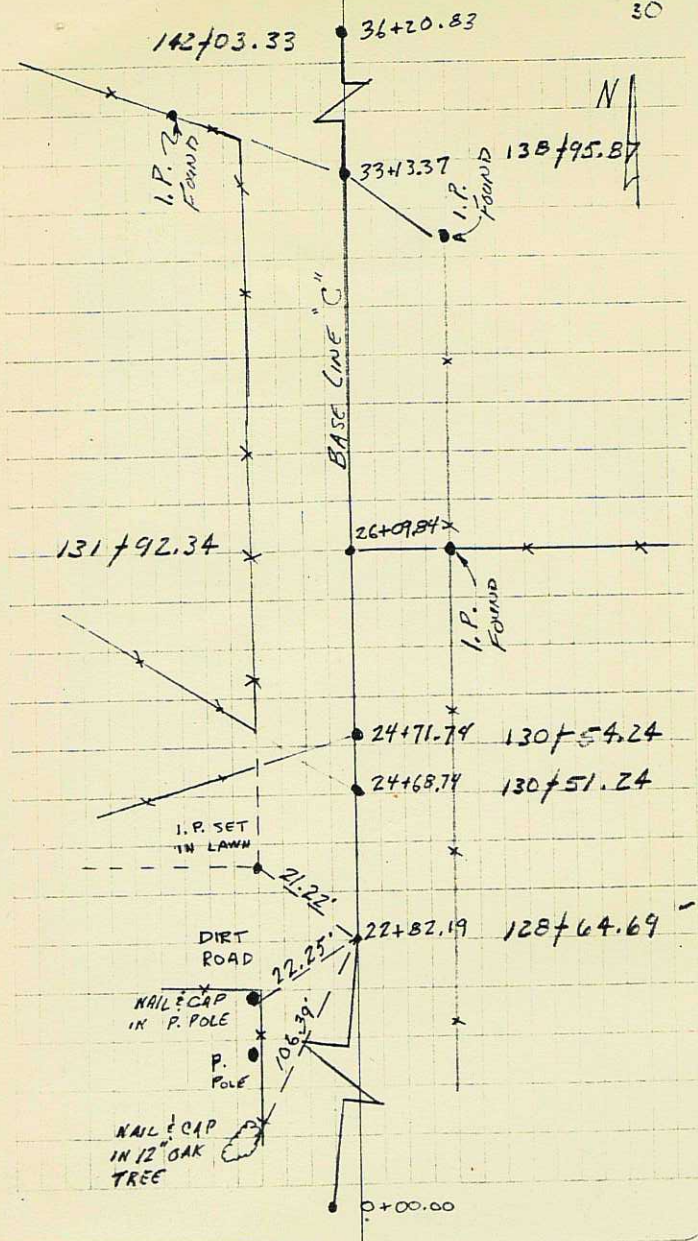
"A" 105 + 32.50 =

"C" 0 + 00.00

25	BS	F.S.	Z	DIST.
0+00.00	22+32.19	Æ	90° 11' RT	16.8'
2+27.89	0+00	Æ	270° 59' RT	16.9'
5+42.70	0+00	Æ	271° 26' RT	18.3'
8+69.35	0+00	Æ	269° 58' RT	17.7'
8+69.35	0+00	Æ	89° 55' RT	15.0'
7+01.23	0+00	Æ	270° 51' RT	15.0'



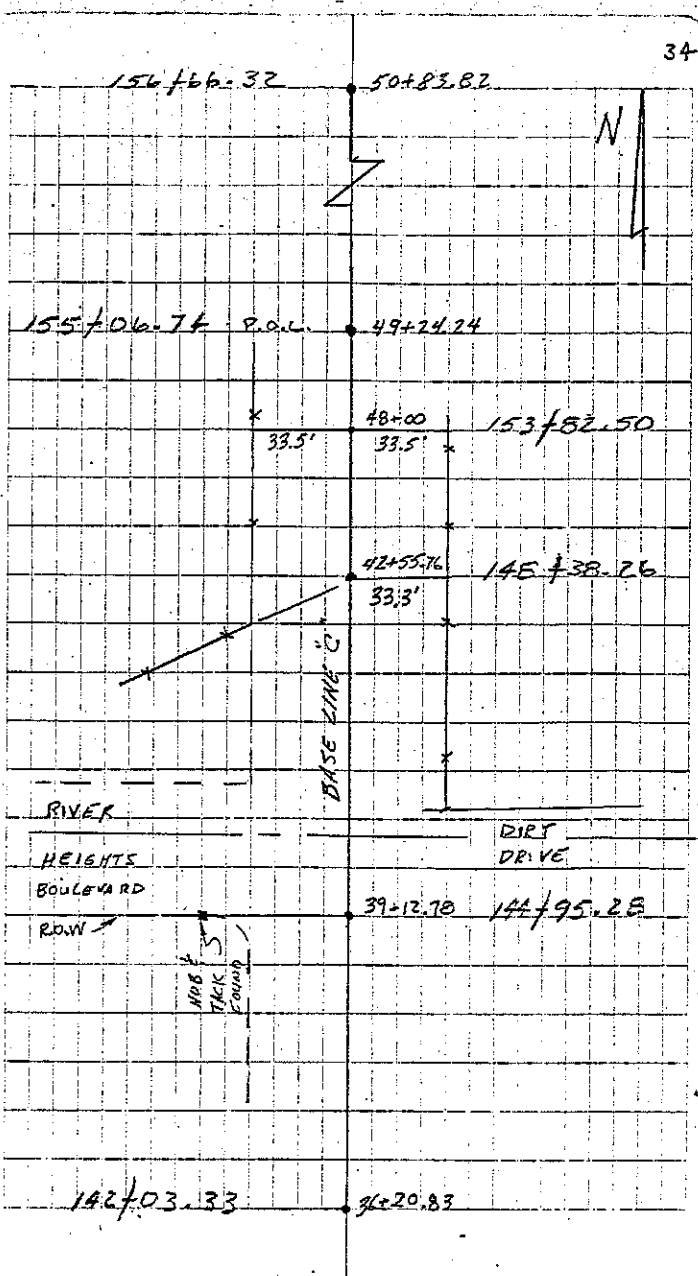
π	B.S.	F.S.	*	DIST.
22+82.19	0+00.00	36+20.83	179°36'10" Rt.	
			2) 359°0'50"	
			3) 173°47'00"	
			A) 179-36-20	
24+68.74	22+82.19	Æ	140-39 Rt.	19.5'
24+71.74	22+82.19	Æ	75-17 Rt.	14.4'
26+09.84	22+82.19	I.P. FOUND Æ	269-04 Rt.	16.72'
33+13.37	22+82.19	Æ	106-15 Rt.	15.0'
		I.P. FOUND	106-15 Rt.	39.03'
		I.P. FOUND	348-03 Rt.	84.60'



31

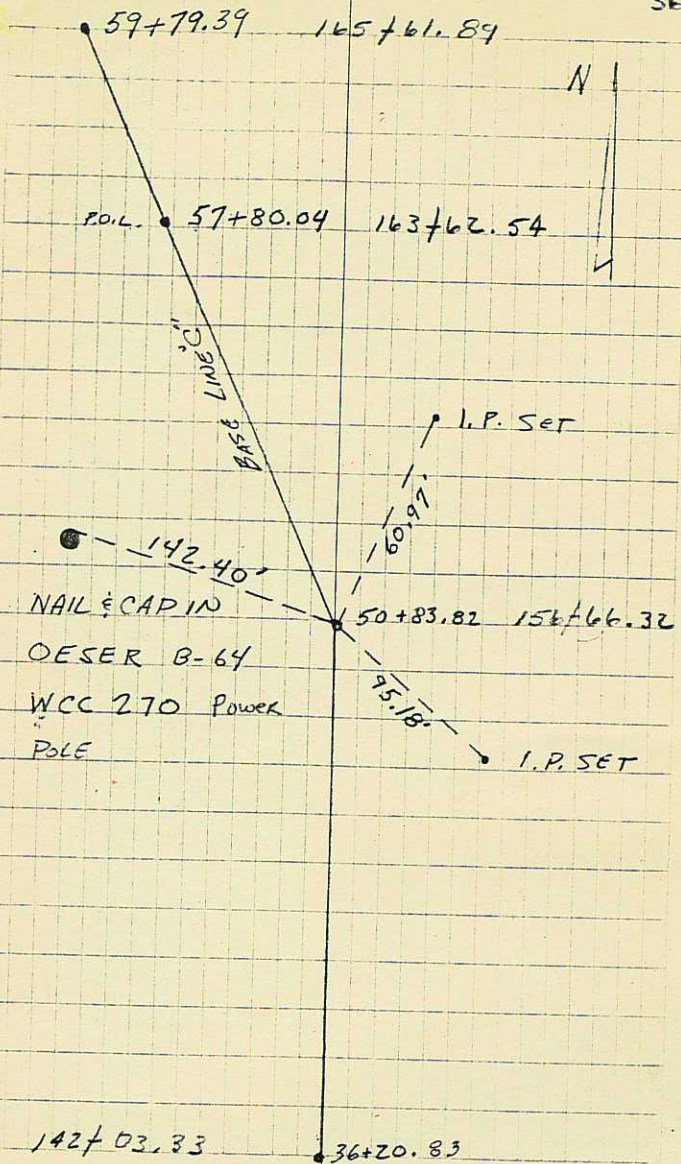
+	B.S.	F.S.	+	DIST.
36+20.83	22+82.19	ROBCHARD DRIVE	88-24 Rt.	
36+20.83	22+82.19	50+83.82	1) 79° 52' 00"	
			2) 359° 44' 00"	
			3) 79° 36' 00"	
			A) 179-52-00	

34

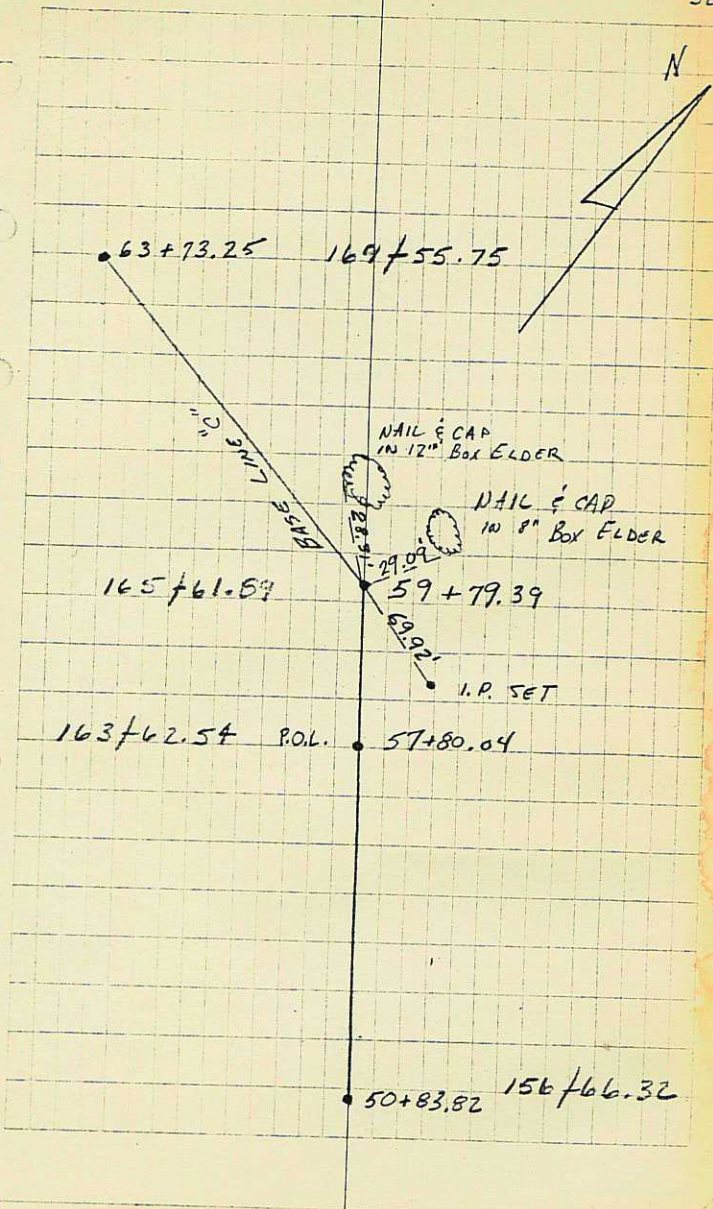


.35

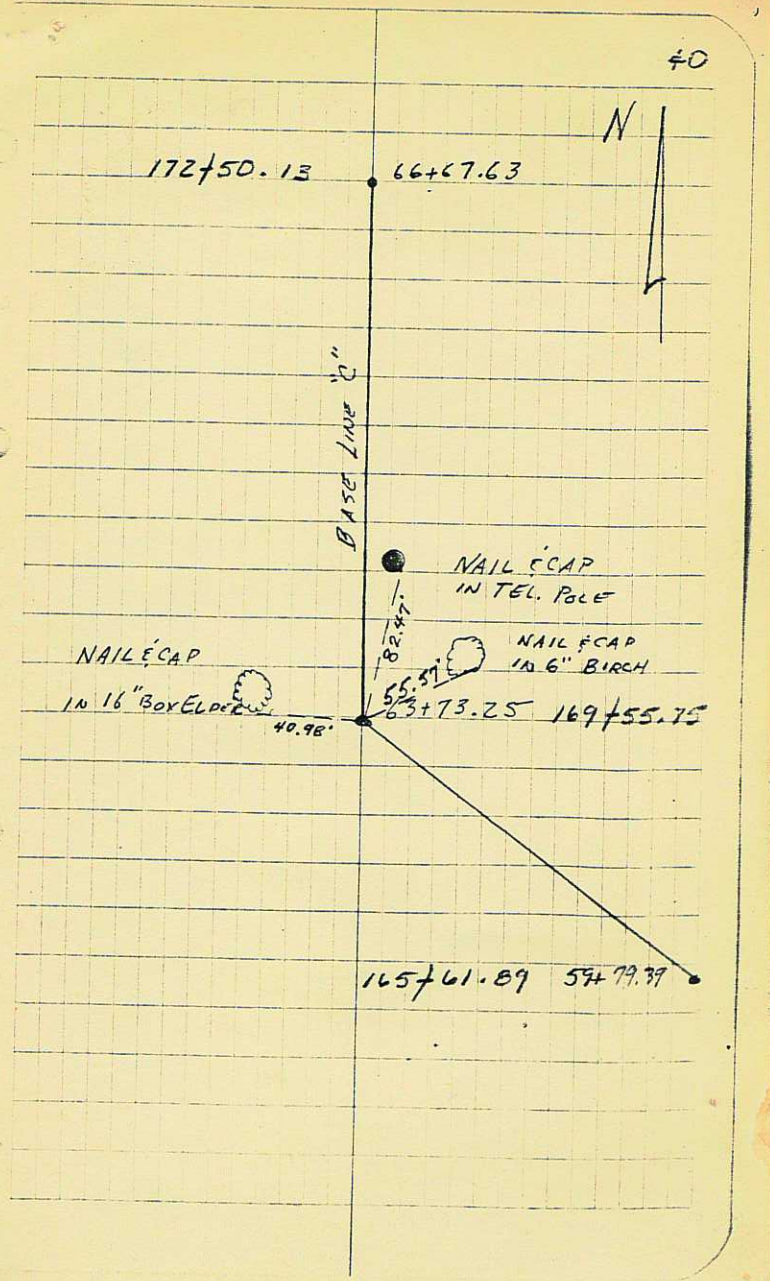
\angle	B.S.	I.S.	\angle	DIST.
	50+83.82	36+20.83	59+79.39	1) 126-57-30
				2) 253-54-50
				3) 388-52-30
				4) 126-57-30
				1
57+80.04	59+79.39			50°57'00"
				206.92



	B.S.	F.S.	Σ	DIST.
59+79.39	50+83.82	63+73.25	1) 145° 29' 10" RT	99° 34' 30" / 300.00
			2) 290° 58' 40"	+ 98.04
			3) 436° 28' 10"	295.82
			4) 145° 29' 23"	



B.S.	F.S.	+	DIST
63+73.25	59+79.39	66+67.63	1) 230° 24' 45" RT
			2) 460° 49' 40"
			3) 691° 14' 40"
			A) 230° 24' 53"



41

π	B.S.	F.S.	∠	DIST.
66+67.63	63+73.25	80+63.90	1) 125° 41' 10" Rt.	
			2) 257° 22' 20"	
			3) 386° 03' 40"	
			A) 125° 41' 13"	

1081.96
9999

973764
973764
973764

108087804

1000.60

1080.81
1081.60

63+07 52
52+25 92

1081 60
6307 52

20779892
124480
1757372
757372
00377
1081.96
1081.96

100377
87
0029
8.7
3
229

13 10.0029
20 0058
10